

Coaxial

Power Splitter/Combiner

ZB16PD-72+

16 Way-0° 50Ω 400 to 700 MHz



Maximum Ratings

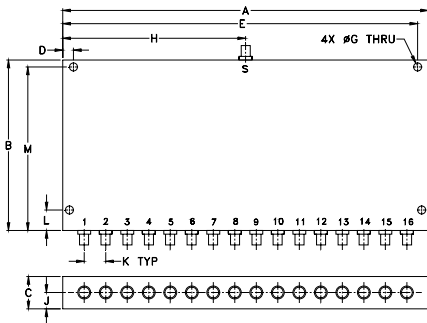
Operating Temperature	-55°C to 100°C
Storage Temperature	-55°C to 100°C
Power Input (as a splitter)	10W max.
Internal Dissipation	2W max.

Permanent damage may occur if any of these limits are exceeded.

Coaxial Connections

SUMPORT	S
PORT 1,2,3,.....16	1,2,3,.....16

Outline Drawing



Outline Dimensions (inch/mm)

A	B	C	D	E	F	G
11.00	4.00	.88	.250	10.75	--	.187
279.40	101.60	22.35	6.35	273.05	--	4.75
H	J	K	L	M	wt	
5.50	.44	.66	.25	3.75	grams	
139.70	11.18	16.76	6.35	95.25	1130	

Features

- low insertion loss, 0.7 dB typ.
- excellent input VSWR, 1.10:1 typ.
- excellent output VSWR, 1.05:1 typ.
- very high isolation, 30 dB typ.

Applications

- UHF TV/DTV
- CDMA
- GSM

CASE STYLE: UU573

Connectors	Model	Price	Qty.
SMA	ZB16PD-72-S+	\$259.95 ea.	(1-9)

+ RoHS compliant in accordance with EU Directive (2002/95/EC)

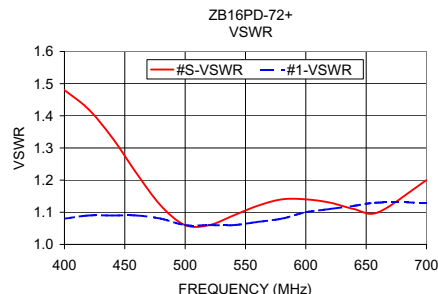
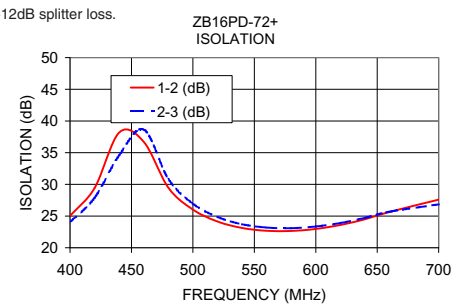
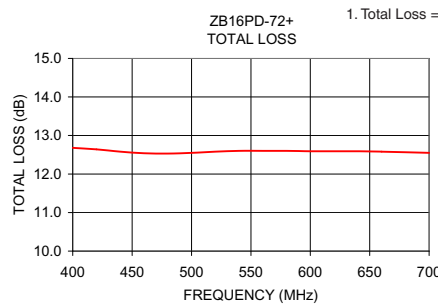
The +Suffix has been added in order to identify RoHS Compliance. See our web site for RoHS Compliance methodologies and qualifications.

Electrical Specifications

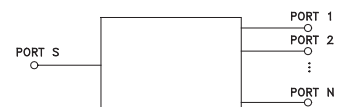
FREQ. RANGE (MHz)	ISOLATION (dB)		INSERTION LOSS (dB) ABOVE 12 dB		PHASE UNBALANCE (Degrees)	AMPLITUDE UNBALANCE (dB)	VSWR (:1)			
	Typ.	Min.	Typ.	Max.			S		OUT	
f _L -f _H					Max.	Max.	Typ.	Max.	Typ.	Max.
400-700	30	20	0.7	1.4	8	0.6	1.10	1.6	1.05	1.3

Typical Performance Data

Frequency (MHz)	Total Loss ¹ (dB)	Amplitude Unbalance (dB)	Isolation (dB)		Phase Unbalance (deg.)	VSWR S	VSWR OUT	
			1-2	2-3				
			S-1					
400.00	12.68	0.42		25.02	24.04	2.57	1.48	1.08
420.00	12.64	0.23		29.43	27.87	2.65	1.42	1.09
440.00	12.58	0.13		38.18	34.59	2.86	1.33	1.09
460.00	12.54	0.17		36.71	38.65	2.93	1.22	1.09
480.00	12.53	0.29		29.48	30.86	2.98	1.12	1.08
500.00	12.55	0.35		26.03	26.96	3.84	1.06	1.06
520.00	12.58	0.35		24.14	24.85	5.03	1.06	1.06
540.00	12.60	0.26		23.12	23.71	6.03	1.09	1.06
560.00	12.60	0.20		22.68	23.18	6.44	1.12	1.07
580.00	12.60	0.18		22.65	23.09	6.43	1.14	1.08
600.00	12.59	0.24		22.97	23.35	5.92	1.14	1.10
620.00	12.59	0.29		23.59	23.90	5.19	1.13	1.11
640.00	12.59	0.34		24.50	24.71	4.74	1.11	1.12
660.00	12.58	0.38		25.65	25.69	4.55	1.10	1.13
700.00	12.55	0.45		27.60	26.84	4.97	1.20	1.13



electrical schematic



For detailed performance specs & shopping online see web site

P.O. Box 350166, Brooklyn, New York 11235-0003 (718) 934-4500 Fax (718) 332-4661 The Design Engineers Search Engine www.minicircuits.com Provides ACTUAL Data Instantly at minicircuits.com

Notes: 1. Performance and quality attributes and conditions not expressly stated in this specification sheet are intended to be excluded and do not form a part of this specification sheet. 2. Electrical specifications and performance data contained herein are based on Mini-Circuit's applicable established test performance criteria and measurement instructions. 3. The parts covered by this specification sheet are subject to Mini-Circuits standard limited warranty and terms and conditions (collectively, "Standard Terms"); Purchasers of this part are entitled to the rights and benefits contained therein. For a full statement of the Standard Terms and the exclusive rights and remedies thereunder, please visit Mini-Circuits' website at www.minicircuits.com/MCLStore/terms.jsp.

REV. A
M127604
ED-7000/1
ZB16PD-72+
HY/TD/CP
100602