

Coaxial Power Splitter/Combiner

ZAPD-50+ ZAPD-50

2 Way-0° 50Ω 4400 to 5000 MHz



CASE STYLE: F14

Connectors	Model	Price	Qty.
N-TYPE	ZAPD-50-N(+)	\$64.95	(1-9)

+ RoHS compliant in accordance with EU Directive (2002/95/EC)

The +Suffix identifies RoHS Compliance. See our web site for RoHS Compliance methodologies and qualifications.

Maximum Ratings

Operating Temperature	-55°C to 100°C
Storage Temperature	-55°C to 100°C
Power Input (as a splitter)	10W max.
Internal Dissipation	0.125W max.

Permanent damage may occur if any of these limits are exceeded.

Coaxial Connections

SUM PORT	S
PORT 1	1
PORT 2	3

Features

- low insertion loss, 0.3 dB typ.
- good isolation, 26 dB typ.
- up to 10W power input as splitter
- excellent amplitude unbalance, 0.1 dB typ.
- excellent VSWR, 1.15:1 typ.
- rugged shield case

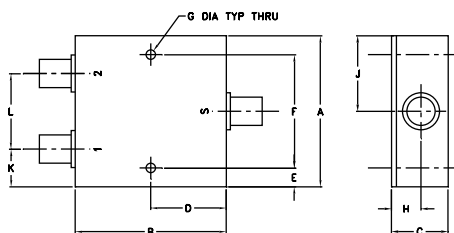
Applications

- wireless
- defense & federal communications

Electrical Specifications

FREQ. RANGE (MHz)	ISOLATION (dB)		INSERTION LOSS (dB) ABOVE 3.0 dB		PHASE UNBALANCE (Degrees)	AMPLITUDE UNBALANCE (dB)
	Typ.	Min.	Typ.	Max.		
f_c - f_u					Max.	Max.
4400-5000	26	20	0.3	0.8	5	0.5

Outline Drawing



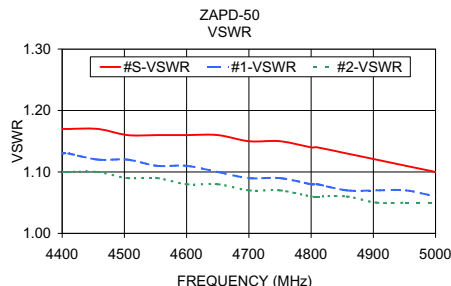
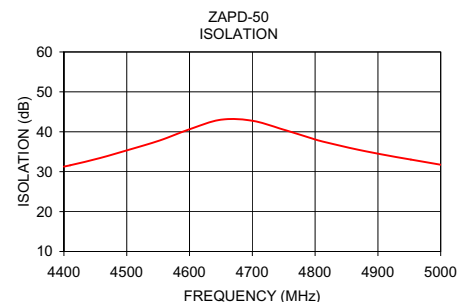
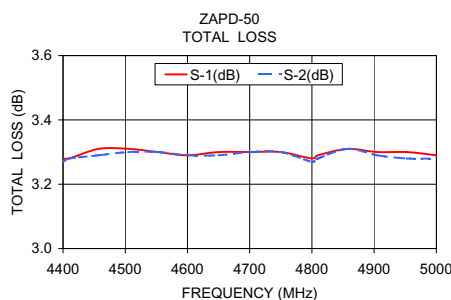
Outline Dimensions (inch/mm)

A	B	C	D	E	F	G
2.00	2.00	0.75	1.00	0.25	1.500	0.125
50.80	50.80	19.05	25.40	6.35	38.10	3.18
H	J	K	L	wt		
0.39	1.00	0.50	1.00	grams		
9.91	25.40	12.70	25.40	170.0		

Typical Performance Data

Frequency (MHz)	Total Loss ¹ (dB)		Amplitude Unbalance (dB)	Isolation (dB)	VSWR S	VSWR 1	VSWR 2
	S-1	S-2					
4400.00	3.28	3.27	0.01	31.27	1.17	1.13	1.10
4410.00	3.28	3.28	0.00	31.59	1.17	1.13	1.10
4457.50	3.31	3.29	0.01	33.42	1.17	1.12	1.10
4505.00	3.31	3.30	0.01	35.55	1.16	1.12	1.09
4552.50	3.30	3.30	0.00	37.82	1.16	1.11	1.09
4600.00	3.29	3.29	0.00	40.63	1.16	1.11	1.08
4650.00	3.30	3.29	0.00	43.02	1.16	1.10	1.08
4700.00	3.30	3.30	0.00	42.77	1.15	1.09	1.07
4750.00	3.30	3.30	0.00	40.53	1.15	1.09	1.07
4800.00	3.28	3.27	0.01	38.07	1.14	1.08	1.06
4810.00	3.29	3.28	0.01	37.64	1.14	1.08	1.06
4857.50	3.31	3.31	0.01	35.87	1.13	1.07	1.06
4905.00	3.30	3.29	0.01	34.37	1.12	1.07	1.05
4952.50	3.30	3.28	0.02	33.03	1.11	1.07	1.05
5000.00	3.29	3.28	0.01	31.75	1.10	1.06	1.05

1. Total Loss = Insertion Loss + 3dB splitter loss.



electrical schematic



Mini-Circuits®
ISO 9001 ISO 14001 AS 9100 CERTIFIED
IF/RF MICROWAVE COMPONENTS

For detailed performance specs & shopping online see web site

P.O. Box 350166, Brooklyn, New York 11235-0003 (718) 934-4500 Fax (718) 332-4661 The Design Engineers Search Engine www.minicircuits.com Provides ACTUAL Data Instantly at minicircuits.com

Notes: 1. Performance and quality attributes and conditions not expressly stated in this specification sheet are intended to be excluded and do not form a part of this specification sheet. 2. Electrical specifications and performance data contained herein are based on Mini-Circuit's applicable established test performance criteria and measurement instructions. 3. The parts covered by this specification sheet are subject to Mini-Circuits standard limited warranty and terms and conditions (collectively, "Standard Terms"); Purchasers of this part are entitled to the rights and benefits contained therein. For a full statement of the Standard Terms and the exclusive rights and remedies thereunder, please visit Mini-Circuits' website at www.minicircuits.com/MCLStore/terms.jsp.

REV. B
M127604
ZAPD-50
HY/TD/CP
100614