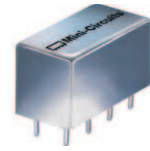


Plug-In Frequency Mixer

SRA-11H+

Level 17 (LO Power +17 dBm) 10 to 3000 MHz



CASE STYLE: A01
PRICE: \$52.50 ea. QTY (1-9)

Maximum Ratings

Operating Temperature	-55°C to 100°C
Storage Temperature	-55°C to 100°C
RF Power	200mW
IF Current	40mA
Permanent damage may occur if any of these limits are exceeded.	

Pin Connections

LO	8
RF	1
IF	3
GROUND	2,5,6,7
CASE GROUND	2,5,6,7
NOT USED	4

Features

- excellent conversion loss, 6.83 dB typ.
- good L-R isolation, 25 dB typ. L-I isolation, 25 dB typ.
- rugged welded construction
- hermetically sealed

Applications

- VHF
- MMDS
- PCS
- GPS
- defense & civil space systems

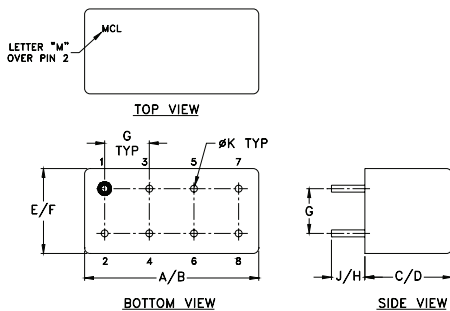
+RoHS Compliant
The +Suffix identifies RoHS Compliance. See our web site for RoHS Compliance methodologies and qualifications

Electrical Specifications

FREQUENCY (MHz)	CONVERSION LOSS (dB)	LO-RF ISOLATION (dB)			LO-IF ISOLATION (dB)		
		L	M	U	L	M	U
10-3000	6.83	27	25	23	27	25	23

1 dB COMP.: +10 dBm typ. L = low range [f_l to $10 f_l$] M = mid range [$10 f_l$ to $f_u/2$] U = upper range [$f_u/2$ to f_u]
m = mid band [$2 f_l$ to $f_u/2$]

Outline Drawing



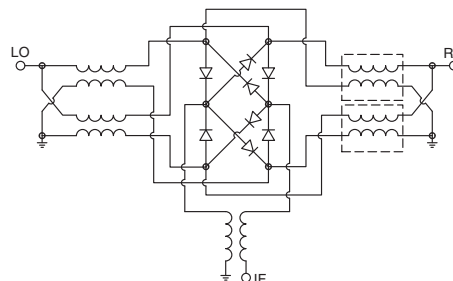
Outline Dimensions (inch/mm)

A	B	C	D	E	F
.770	.800	.385	.400	.370	.400
19.56	20.32	9.78	10.16	9.40	10.16
G	H	J	K	wt	
.200	.20	.14	.031	grams	
5.08	5.08	3.56	0.79	5.2	

Typical Performance Data

Frequency (MHz)	Conversion Loss (dB)	Isolation L-R (dB)	Isolation L-I (dB)	VSWR RF Port (:1)	VSWR LO Port (:1)
10.00	6.43	32.26	35.01	1.13	2.07
20.00	6.58	33.52	36.23	1.07	2.19
103.44	6.60	32.25	33.97	1.08	2.01
200.00	6.78	30.89	32.03	1.13	1.96
290.31	6.75	29.76	30.61	1.18	1.91
500.00	6.94	28.74	29.28	1.29	1.83
570.63	6.81	28.80	29.04	1.34	1.81
757.50	7.00	28.06	28.08	1.48	1.81
944.38	7.05	28.00	26.87	1.66	1.80
1037.80	7.37	28.67	26.49	1.72	1.74
1318.10	6.81	27.69	26.66	1.92	1.69
1505.00	6.68	27.57	27.97	1.99	1.65
1598.40	6.65	27.30	28.78	1.75	1.91
1785.30	6.71	27.75	28.96	1.89	1.91
1972.20	6.57	29.51	31.44	1.76	1.75
2065.60	6.76	28.94	33.79	1.68	1.66
2252.50	6.61	30.22	36.80	1.68	1.49
2439.40	6.63	31.19	37.00	1.69	1.14
2626.30	6.95	30.21	30.13	1.49	1.26
3000.00	8.58	32.46	26.88	1.90	2.47

Electrical Schematic



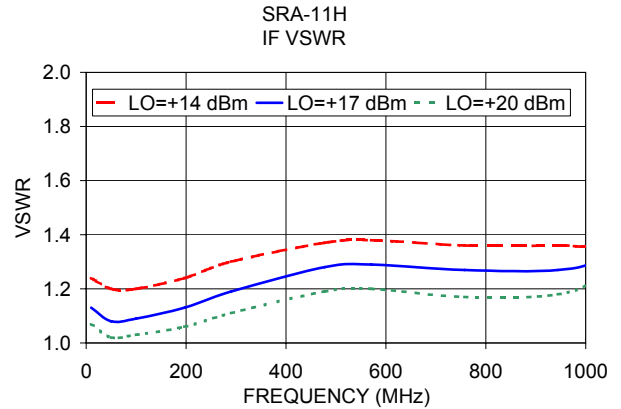
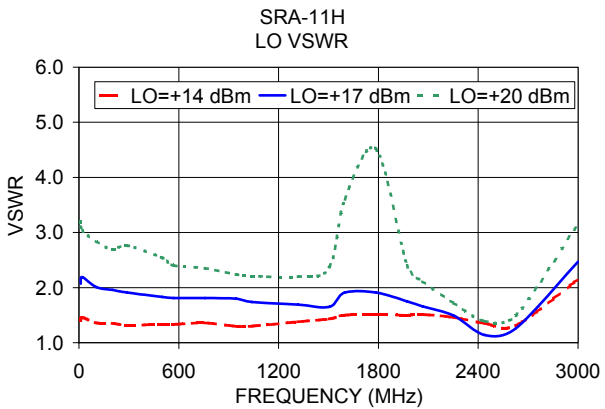
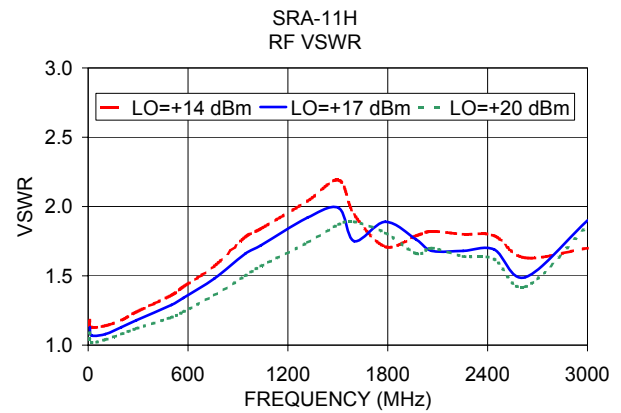
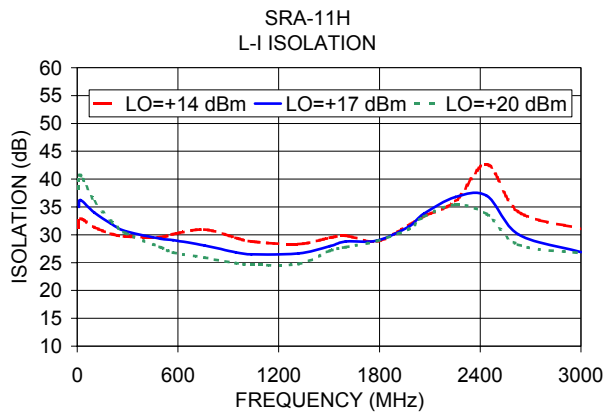
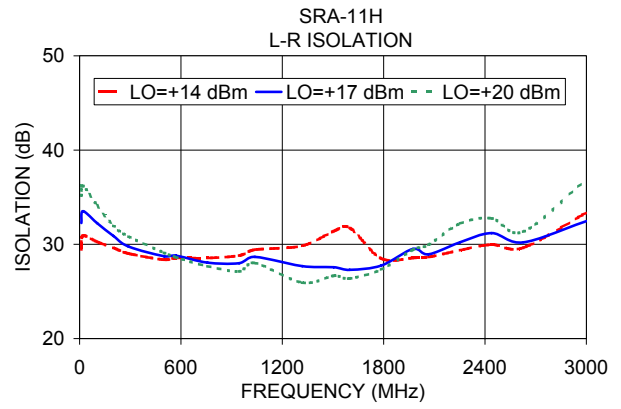
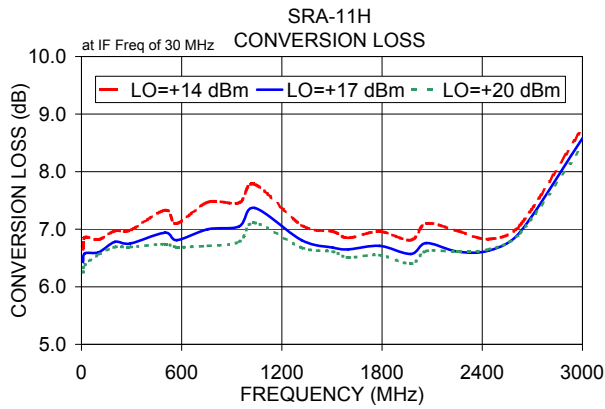
Mini-Circuits
ISO 9001 ISO 14001 AS 9100 CERTIFIED

P.O. Box 350166, Brooklyn, New York 11235-0003 (718) 934-4500 Fax (718) 332-4661 The Design Engineers Search Engine Provides ACTUAL Data Instantly at minicircuits.com

For detailed performance specs & shopping online see web site

Notes: 1. Performance and quality attributes and conditions not expressly stated in this specification sheet are intended to be excluded and do not form a part of this specification sheet. 2. Electrical specifications and performance data contained herein are based on Mini-Circuit's applicable established test performance criteria and measurement instructions. 3. The parts covered by this specification sheet are subject to Mini-Circuit's standard limited warranty and terms and conditions (collectively, "Standard Terms"); Purchasers of this part are entitled to the rights and benefits contained therein. For a full statement of the Standard Terms and the exclusive rights and remedies thereunder, please visit Mini-Circuit's website at www.minicircuits.com/MCLStore/terms.jsp.

REV. A
M98898
SRA-11H
DJ/TD/CP/AM
130502
Page 1 of 2



For detailed performance specs & shopping online see web site

P.O. Box 350166, Brooklyn, New York 11235-0003 (718) 934-4500 Fax (718) 332-4661 The Design Engineers Search Engine Provides ACTUAL Data Instantly at minicircuits.com

IF/RF MICROWAVE COMPONENTS

Notes: 1. Performance and quality attributes and conditions not expressly stated in this specification sheet are intended to be excluded and do not form a part of this specification sheet. 2. Electrical specifications and performance data contained herein are based on Mini-Circuit's applicable established test performance criteria and measurement instructions. 3. The parts covered by this specification sheet are subject to Mini-Circuits standard limited warranty and terms and conditions (collectively, "Standard Terms"); Purchasers of this part are entitled to the rights and benefits contained therein. For a full statement of the Standard Terms and the exclusive rights and remedies thereunder, please visit Mini-Circuits' website at www.minicircuits.com/MCLStore/terms.jsp.