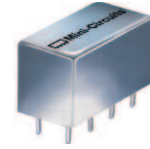


Plug-In Frequency Mixer

SRA-1MH+

Level 13 (LO Power +13 dBm) 0.5 to 500 MHz



CASE STYLE: A01
PRICE: \$19.20 ea. QTY (1-9)

+RoHS Compliant
The +Suffix identifies RoHS Compliance. See our web site for RoHS Compliance methodologies and qualifications

Maximum Ratings

Operating Temperature	-55°C to 100°C
Storage Temperature	-55°C to 100°C
RF Power	200mW
IF Current	40mA
Permanent damage may occur if any of these limits are exceeded.	

Pin Connections

LO	8
RF	1
IF	3,4^
GROUND	2,5,6,7
CASE GROUND	2

^ pins must be connected together externally

Features

- excellent conversion loss, 5.65 dB typ.
- high L-R isolation, 45 dB typ. L-I isolation, 40 dB typ.
- rugged welded construction
- hermetic

Applications

- VHF
- defense & federal communications
- FM broadcast radio

Electrical Specifications

FREQUENCY (MHz)	CONVERSION LOSS (dB)	LO-RF ISOLATION (dB)			LO-IF ISOLATION (dB)												
		L	M	U	L	M	U										
0.5-500	DC-500	5.65	.04	7.0	8.5	50	45	45	30	35	25	45	35	40	25	30	20

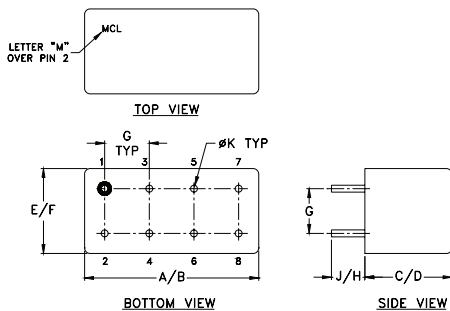
1 dB COMP.: +9 dBm typ.

L = low range [f_l to $10 f_l$]
m = mid band [$2f_l$ to $f_u/2$]

M = mid range [$10 f_l$ to $f_u/2$]

U = upper range [$f_u/2$ to f_u]

Outline Drawing



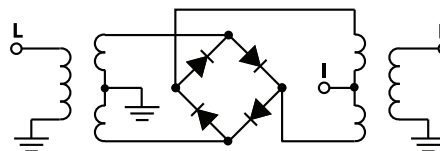
Outline Dimensions (inch/mm)

A	B	C	D	E	F
.770	.800	.385	.400	.370	.400
19.56	20.32	9.78	10.16	9.40	10.16
G	H	J	K		wt
.200	.20	.14	.031		grams
5.08	5.08	3.56	0.79		5.2

Typical Performance Data

Frequency (MHz)	Conversion Loss (dB)	Isolation L-R (dB)	Isolation L-I (dB)	VSWR RF Port (:1)	VSWR LO Port (:1)
1.00	7.26	66.63	59.30	1.29	1.95
2.00	6.48	65.04	58.69	1.13	1.91
5.00	5.80	64.44	58.27	1.07	1.85
10.00	5.74	61.13	53.40	1.07	1.98
20.00	5.69	58.51	50.54	1.07	1.94
50.00	5.58	56.72	48.94	1.08	1.82
78.97	5.62	55.44	47.33	1.08	1.80
100.00	5.44	53.92	46.33	1.09	1.79
125.75	5.44	53.09	46.06	1.09	1.83
141.35	5.41	52.16	45.59	1.10	1.85
172.53	5.46	48.96	44.44	1.11	1.88
200.00	5.64	47.22	43.17	1.11	1.87
250.50	5.55	44.34	41.70	1.15	1.96
297.29	5.63	44.71	40.68	1.18	2.04
344.07	5.80	41.06	38.65	1.23	2.06
390.85	5.89	41.01	37.04	1.32	2.08
422.04	6.29	39.17	36.14	1.37	2.11
453.23	6.32	38.02	34.90	1.42	2.22
484.41	6.27	37.70	34.14	1.45	2.34
500.00	6.32	38.19	35.22	1.49	2.45

Electrical Schematic



Mini-Circuits
ISO 9001 ISO 14001 AS 9100 CERTIFIED

For detailed performance specs & shopping online see web site

P.O. Box 350166, Brooklyn, New York 11235-0003 (718) 934-4500 Fax (718) 332-4661 The Design Engineers Search Engine **Mini-Circuits** Provides ACTUAL Data Instantly at minicircuits.com

Notes: 1. Performance and quality attributes and conditions not expressly stated in this specification sheet are intended to be excluded and do not form a part of this specification sheet. 2. Electrical specifications and performance data contained herein are based on Mini-Circuit's applicable established test performance criteria and measurement instructions. 3. The parts covered by this specification sheet are subject to Mini-Circuits standard limited warranty and terms and conditions (collectively, "Standard Terms"); Purchasers of this part are entitled to the rights and benefits contained therein. For a full statement of the Standard Terms and the exclusive rights and remedies thereunder, please visit Mini-Circuits' website at www.minicircuits.com/MCLStore/terms.jsp.

REV. A
M98898
SRA-1MH
DJ/TD/CP/AM
130502

