

Plug-In

Frequency Mixer

Level 10 (LO Power +10 dBm) 0.15 to 400 MHz

TUF-3LH+



CASE STYLE: B02
PRICE: \$12.20 ea. QTY (10)

+RoHS Compliant

The +Suffix identifies RoHS Compliance. See our web site for RoHS Compliance methodologies and qualifications

Maximum Ratings

Operating Temperature	-55°C to 100°C
Storage Temperature	-55°C to 100°C
RF Power	50mW
IF Current	40mA

Permanent damage may occur if any of these limits are exceeded.

Pin Connections

LO	4
RF	1
IF	2
GROUND	3
CASE GROUND	3

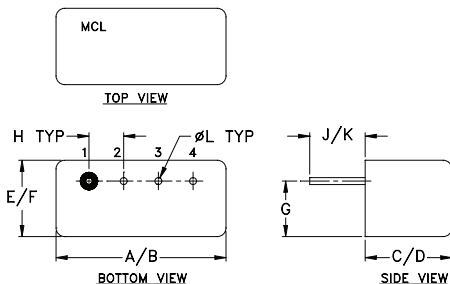
Features

- low conversion loss, 4.8 dB typ.
- high isolation, 51 dB typ. L-R, 45 dB typ. L-I
- rugged welded construction

Applications

- HF/VHF
- defense & federal communications

Outline Drawing



Outline Dimensions (inch/mm)

A	B	C	D	E	F
.480	.500	.240	.255	.210	.230
12.19	12.70	6.10	6.48	5.33	5.84
G	H	J	K	L	wt
.16	.100	.14	.20	.020	grams
4.06	2.54	3.56	5.08	0.51	1.9

Electrical Specifications

FREQUENCY (MHz)	CONVERSION LOSS (dB)	LO-RF ISOLATION (dB)			LO-IF ISOLATION (dB)								
		L	M	U	L	M	U						
0.15-400	DC-400	67	50	51	30	40	25	67	40	45	25	34	20

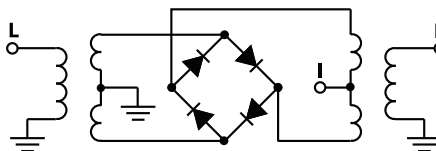
1 dB COMP.: +5 dBm typ.

L = low range [f_L to $10 f_L$] M = mid range [$10 f_L$ to $f_U/2$] U = upper range [$f_U/2$ to f_U]
m = mid band [$2f_L$ to $f_U/2$]

Typical Performance Data

Frequency (MHz)		Conversion Loss (dB)	Isolation L-R (dB)	Isolation L-I (dB)	VSWR RF Port (:1)	VSWR LO Port (:1)
RF	LO	LO +10dBm	LO +10dBm	LO +10dBm	LO +10dBm	LO +10dBm
0.15	30.15	4.98	69.38	85.98	1.21	2.67
0.30	30.30	4.90	69.38	85.28	1.15	2.64
0.50	30.50	4.83	69.26	86.26	1.10	2.57
1.00	31.00	4.74	69.26	83.06	1.06	2.52
1.50	31.50	4.69	69.08	80.98	1.03	2.36
2.00	32.00	4.66	68.95	78.75	1.02	2.40
5.00	35.00	4.62	68.20	71.20	1.01	2.33
10.00	40.00	4.59	66.47	65.07	1.02	2.31
20.00	50.00	4.68	63.23	59.53	1.02	2.25
50.00	80.00	4.66	56.07	50.61	1.02	2.25
57.27	87.27	4.67	54.97	49.44	1.01	2.29
100.00	70.00	4.67	50.23	45.42	1.01	2.25
114.39	84.39	4.68	48.98	45.06	1.01	2.28
171.51	14.15	4.80	45.17	42.49	1.01	2.33
200.00	170.00	4.81	42.29	40.27	1.01	2.44
228.64	198.64	4.90	41.00	37.35	1.04	2.39
285.76	255.76	5.11	48.00	34.00	1.09	2.41
342.88	312.88	5.17	39.79	33.43	1.20	2.58
385.72	356.72	5.29	34.24	31.62	1.23	2.76
400.00	370.00	5.48	34.34	30.09	1.27	2.78

Electrical Schematic



Mini-Circuits
ISO 9001 ISO 14001 AS 9100 CERTIFIED

P.O. Box 350166, Brooklyn, New York 11235-0003 (718) 934-4500 Fax (718) 332-4661 The Design Engineers Search Engine Provides ACTUAL Data Instantly at minicircuits.com

For detailed performance specs & shopping online see web site

Notes: 1. Performance and quality attributes and conditions not expressly stated in this specification sheet are intended to be excluded and do not form a part of this specification sheet. 2. Electrical specifications and performance data contained herein are based on Mini-Circuit's applicable established test performance criteria and measurement instructions. 3. The parts covered by this specification sheet are subject to Mini-Circuit's standard limited warranty and terms and conditions (collectively, "Standard Terms"); Purchasers of this part are entitled to the rights and benefits contained therein. For a full statement of the Standard Terms and the exclusive rights and remedies thereunder, please visit Mini-Circuit's website at www.minicircuits.com/MCLStore/terms.jsp.

REV. A
M98898
TUF-3LH+
DJ/TD/CP/AM
130502
Page 1 of 2

