

Plug-In Frequency Mixer

SRA-11+

Level 7 (LO Power +7 dBm) 5 to 2000 MHz



CASE STYLE: A06
PRICE: \$26.20 ea. QTY (1-9)

Maximum Ratings

Operating Temperature	-55°C to 100°C
Storage Temperature	-55°C to 100°C
RF Power	50mW
IF Current	40mA
Permanent damage may occur if any of these limits are exceeded.	

Pin Connections

LO	8
RF	1
IF	3
GROUND	2,5,6,7
CASE GROUND	2,5,6,7
NOT USED	4

Features

- excellent conversion loss, 6.72 dB typ.
- good L-R isolation, 35 dB typ. L-I isolation, 30 dB typ.
- broadband, 5 to 2000 MHz
- rugged welded construction
- hermetic

Applications

- GPS
- defense & aeronautical systems
- cellular

+RoHS Compliant
The +Suffix identifies RoHS Compliance. See our web site for RoHS Compliance methodologies and qualifications

Electrical Specifications

FREQUENCY (MHz)		CONVERSION LOSS (dB)				LO-RF ISOLATION (dB)						LO-IF ISOLATION (dB)					
LO/RF f_L - f_U	IF	Mid-Band m		Total Range Max.	Total Range Max.	L		M		U		L		M		U	
		\bar{X}	σ			Max.	Max.	Typ.	Min.	Typ.	Min.	Typ.	Min.	Typ.	Min.	Typ.	Min.
5-2000	10-600	6.72	.07	8.5	9.0	50	45	35	25	30	20	45	40	30	20	25	15

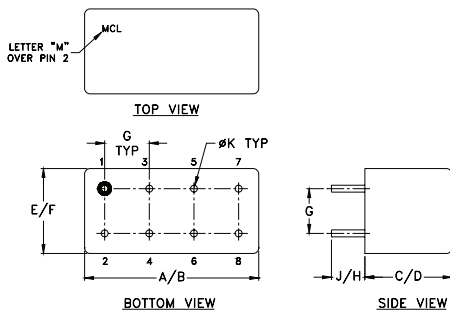
1 dB COMP.: +1 dBm typ.

L = low range [f_L to $10 f_L$]
m = mid band [$2 f_L$ to $f_U/2$]

M = mid range [$10 f_L$ to $f_U/2$]

U = upper range [$f_U/2$ to f_U]

Outline Drawing



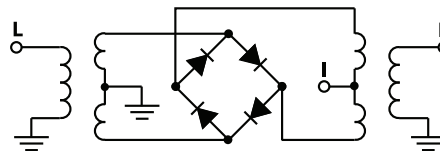
Outline Dimensions (inch/mm)

A	B	C	D	E	F
.770	.800	.285	.310	.370	.400
19.56	20.32	7.24	7.87	9.40	10.16
G	H	J	K	wt	
.200	.20	.14	.031	grams	
5.08	5.08	3.56	0.79	5.2	

Typical Performance Data

Frequency (MHz)		Conversion Loss (dB)	Isolation L-R (dB)	Isolation L-I (dB)	VSWR RF Port (:1)	VSWR LO Port (:1)
RF	LO	LO +7dBm	LO +7dBm	LO +7dBm	LO +7dBm	LO +7dBm
5.00	35.00	5.85	46.19	>67.00	3.19	3.03
10.00	40.00	5.88	46.23	>67.00	2.54	2.69
20.00	50.00	6.11	46.26	>67.00	2.45	2.70
50.00	80.00	6.37	45.89	>67.00	2.62	2.61
100.00	70.00	6.25	44.70	64.66	2.96	2.46
200.00	170.00	6.62	41.17	55.90	3.21	2.31
311.92	281.92	6.71	38.72	50.11	3.31	2.27
465.39	435.39	7.06	37.94	46.15	3.42	2.13
618.85	588.85	7.40	38.38	45.38	3.19	2.08
772.31	742.31	7.53	38.07	45.67	2.96	1.93
849.04	819.04	7.22	37.13	43.78	2.41	1.73
1000.00	970.00	7.05	36.28	38.27	2.10	1.58
1156.00	1126.00	6.76	35.18	43.23	1.86	1.45
1386.20	1356.20	7.53	41.65	38.52	2.12	1.17
1462.90	1432.90	7.62	41.43	41.57	2.27	1.17
1500.00	1470.00	7.48	41.94	42.71	2.19	1.32
1616.40	1586.40	6.96	43.41	43.97	2.08	1.39
1800.20	1770.00	6.79	41.03	38.23	1.87	1.59
1923.30	1893.30	6.64	38.49	30.27	1.79	1.70
2000.00	1970.00	6.69	39.35	27.98	1.67	1.74

Electrical Schematic



Mini-Circuits
ISO 9001 ISO 14001 AS 9100 CERTIFIED

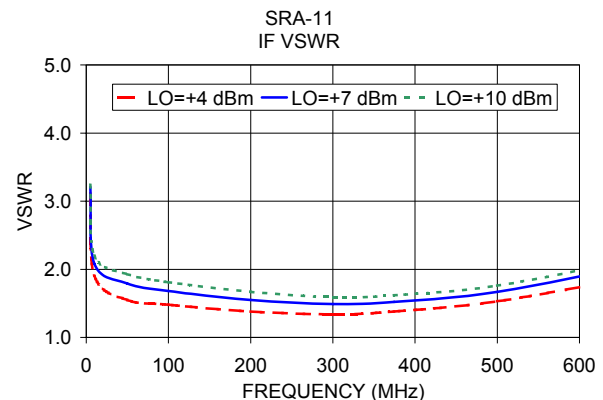
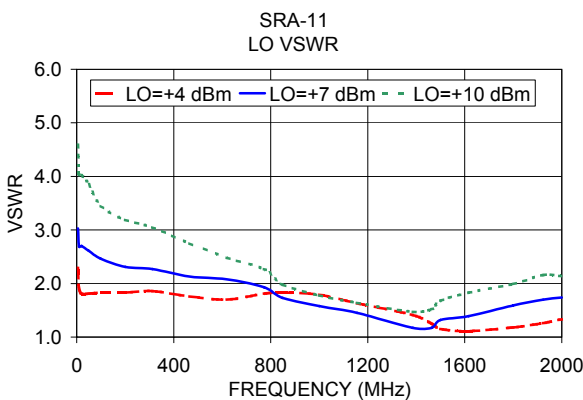
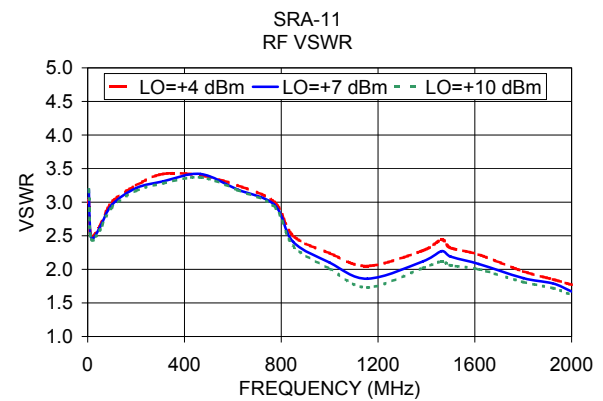
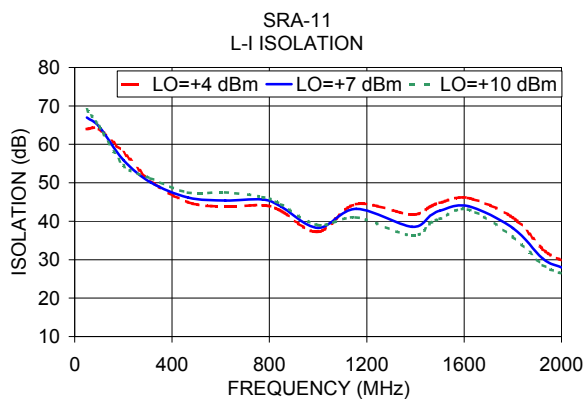
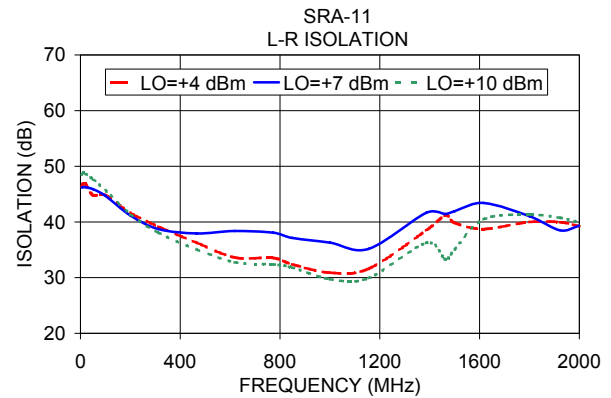
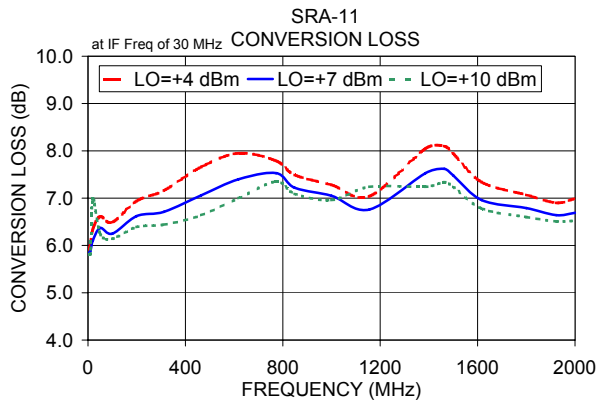
P.O. Box 350166, Brooklyn, New York 11235-0003 (718) 934-4500 Fax (718) 332-4661 The Design Engineers Search Engine Provides ACTUAL Data Instantly at minicircuits.com

IF/RF MICROWAVE COMPONENTS

For detailed performance specs & shopping online see web site

Notes: 1. Performance and quality attributes and conditions not expressly stated in this specification sheet are intended to be excluded and do not form a part of this specification sheet. 2. Electrical specifications and performance data contained herein are based on Mini-Circuit's applicable established test performance criteria and measurement instructions. 3. The parts covered by this specification sheet are subject to Mini-Circuit's standard limited warranty and terms and conditions (collectively, "Standard Terms"); Purchasers of this part are entitled to the rights and benefits contained therein. For a full statement of the Standard Terms and the exclusive rights and remedies thereunder, please visit Mini-Circuit's website at www.minicircuits.com/MCLStore/terms.jsp.

REV. A
M98898
SRA-11
DJ/TD/CP/AM
130502
Page 1 of 2



For detailed performance specs & shopping online see web site

P.O. Box 350166, Brooklyn, New York 11235-0003 (718) 934-4500 Fax (718) 332-4661 The Design Engineers Search Engine  Provides ACTUAL Data Instantly at minicircuits.com

IF/RF MICROWAVE COMPONENTS

Notes: 1. Performance and quality attributes and conditions not expressly stated in this specification sheet are intended to be excluded and do not form a part of this specification sheet. 2. Electrical specifications and performance data contained herein are based on Mini-Circuit's applicable established test performance criteria and measurement instructions. 3. The parts covered by this specification sheet are subject to Mini-Circuits standard limited warranty and terms and conditions (collectively, "Standard Terms"); Purchasers of this part are entitled to the rights and benefits contained therein. For a full statement of the Standard Terms and the exclusive rights and remedies thereunder, please visit Mini-Circuits' website at www.minicircuits.com/MCLStore/terms.jsp.