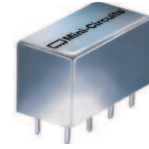


Plug-In Frequency Mixer

SRA-3+

Level 7 (LO Power +7 dBm) 0.025 to 200 MHz



CASE STYLE: A01
PRICE: \$21.20 ea. QTY (1-9)

+RoHS Compliant
The +Suffix identifies RoHS Compliance. See our web site for RoHS Compliance methodologies and qualifications

Maximum Ratings

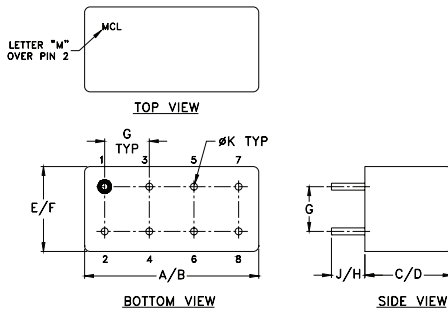
Operating Temperature	-55°C to 100°C
Storage Temperature	-55°C to 100°C
RF Power	50mW
IF Current	40mA
Permanent damage may occur if any of these limits are exceeded.	

Pin Connections

LO	8
RF	1
IF	3,4^
GROUND	2,5,6,7
CASE GROUND	2

^ pins must be connected together externally

Outline Drawing



Outline Dimensions (inch/mm)

A	B	C	D	E	F
.770	.800	.385	.400	.370	.400
19.56	20.32	9.78	10.16	9.40	10.16
G	H	J	K	wt	
.200	.20	.14	.031	grams	
5.08	5.08	3.56	0.79	5.2	

Features

- excellent conversion loss, 4.61 dB typ.
- high L-R isolation, 45 dB typ. L-I isolation, 40 dB typ.
- rugged welded construction
- hermetic

Applications

- VHF
- defense & federal communications
- FM broadcast radio

Electrical Specifications

FREQUENCY (MHz)	CONVERSION LOSS (dB)	LO-RF ISOLATION (dB)			LO-IF ISOLATION (dB)											
		L	M	U	L	M	U									
.025-200	DC-200	4.61	.06	7.5	8.5	60	50	45	35	25	45	35	40	30	30	20

1 dB COMP.: +1 dBm typ.

L = low range [f_l to $10 f_l$]

m = mid band [$2 f_l$ to $f_u/2$]

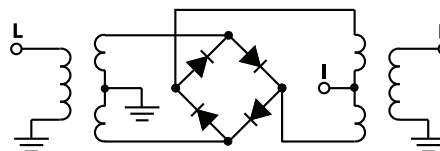
M = mid range [$10 f_l$ to $f_u/2$]

U = upper range [$f_u/2$ to f_u]

Typical Performance Data

Frequency (MHz)		Conversion Loss (dB)	Isolation L-R (dB)	Isolation L-I (dB)	VSWR RF Port (:1)	VSWR LO Port (:1)
RF	LO	LO +7dBm	LO +7dBm	LO +7dBm	LO +7dBm	LO +7dBm
0.025	30.03	6.94	58.72	53.27	1.16	2.06
0.04	30.04	5.80	55.35	51.43	1.17	2.04
0.05	30.05	5.52	54.61	51.09	1.17	2.01
0.10	30.10	5.16	53.51	50.41	1.16	1.99
0.20	30.20	4.98	53.27	50.18	1.16	2.05
0.50	30.50	4.92	53.12	50.13	1.15	2.08
1.00	31.00	4.82	53.18	50.48	1.15	2.07
2.00	32.00	4.77	53.13	50.55	1.14	2.07
5.00	35.00	4.76	53.42	50.99	1.13	2.05
10.00	40.00	4.81	53.68	51.27	1.11	2.02
20.00	50.00	4.87	53.67	50.52	1.10	2.02
38.48	68.48	4.96	53.25	48.52	1.09	2.02
50.00	80.00	4.94	53.49	47.54	1.09	2.03
69.25	99.25	4.90	53.53	45.77	1.08	2.03
84.63	54.63	4.86	53.31	44.13	1.09	2.05
100.00	70.00	4.81	53.55	42.70	1.11	2.07
123.09	93.09	4.87	55.31	40.58	1.13	2.11
153.85	123.85	4.96	52.97	38.04	1.15	2.13
176.93	146.93	5.19	49.53	38.76	1.18	2.14
200.00	170.00	5.28	45.61	38.31	1.21	2.15

Electrical Schematic



Mini-Circuits
ISO 9001 ISO 14001 AS 9100 CERTIFIED

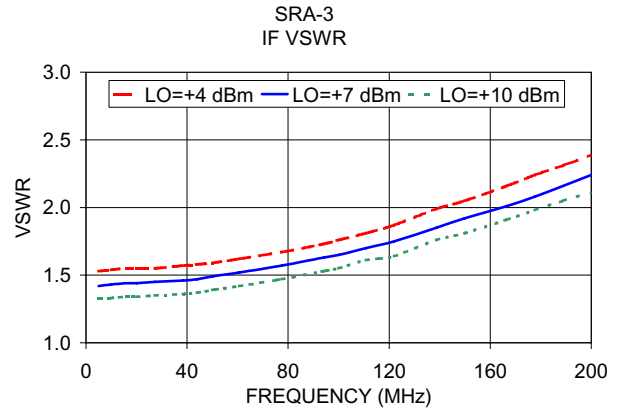
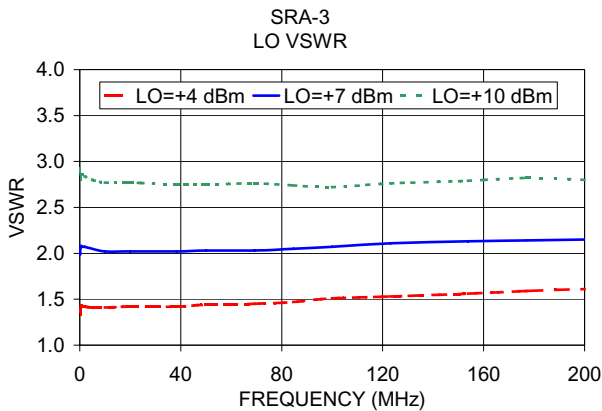
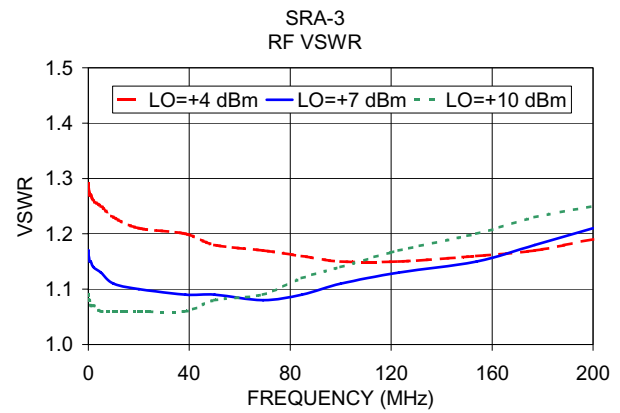
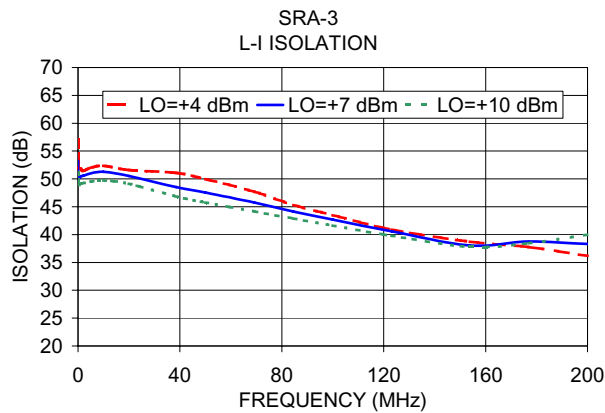
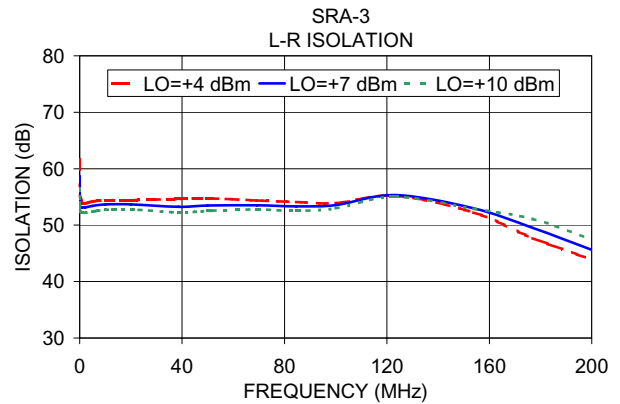
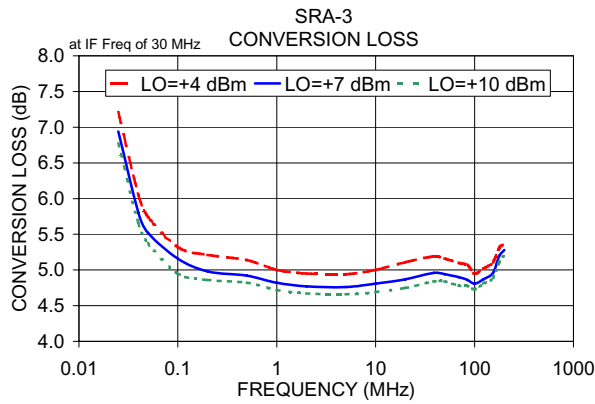
P.O. Box 350166, Brooklyn, New York 11235-0003 (718) 934-4500 Fax (718) 332-4661 The Design Engineers Search Engine **CDR** Provides ACTUAL Data Instantly at minicircuits.com

IF/RF MICROWAVE COMPONENTS

For detailed performance specs & shopping online see web site

Notes: 1. Performance and quality attributes and conditions not expressly stated in this specification sheet are intended to be excluded and do not form a part of this specification sheet. 2. Electrical specifications and performance data contained herein are based on Mini-Circuit's applicable established test performance criteria and measurement instructions. 3. The parts covered by this specification sheet are subject to Mini-Circuit's standard limited warranty and terms and conditions (collectively, "Standard Terms"); Purchasers of this part are entitled to the rights and benefits contained therein. For a full statement of the Standard Terms and the exclusive rights and remedies thereunder, please visit Mini-Circuit's website at www.minicircuits.com/MCLStore/terms.jsp.

REV. A
M98898
SRA-3+
DJ/TD/CP/AM
130502
Page 1 of 2



For detailed performance specs & shopping online see web site

P.O. Box 350166, Brooklyn, New York 11235-0003 (718) 934-4500 Fax (718) 332-4661 The Design Engineers Search Engine Provides ACTUAL Data Instantly at minicircuits.com

IF/RF MICROWAVE COMPONENTS

Notes: 1. Performance and quality attributes and conditions not expressly stated in this specification sheet are intended to be excluded and do not form a part of this specification sheet. 2. Electrical specifications and performance data contained herein are based on Mini-Circuit's applicable established test performance criteria and measurement instructions. 3. The parts covered by this specification sheet are subject to Mini-Circuits standard limited warranty and terms and conditions (collectively, "Standard Terms"); Purchasers of this part are entitled to the rights and benefits contained therein. For a full statement of the Standard Terms and the exclusive rights and remedies thereunder, please visit Mini-Circuits' website at www.minicircuits.com/MCLStore/terms.jsp.