

Up Converter Frequency Mixer

ZX05-U432H+

Level 17 (LO Power +17 dBm) 0.1 to 3900 MHz



Maximum Ratings

Operating Temperature	-40°C to 85°C
Storage Temperature	-55°C to 100°C
IF Power	100mW
Permanent damage may occur if any of these limits are exceeded.	

Coaxial Connections

LO	3
IF (IN)	1
RF (OUT)	2

Features

- up converter mixer
- low conversion loss, 7.5 dB typ.
- high IP3, 26 dB typ.
- rugged construction
- small size
- protected by US patents, 6,790,049 and 7,027,795

Applications

- WIMAX
- wide band receivers

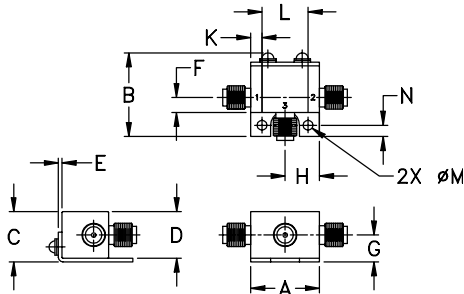
CASE STYLE: FL905

Connectors	Model	Price	Qty.
SMA	ZX05-U432H-S+	\$48.95	(1-24)

+ RoHS compliant in accordance with EU Directive (2002/95/EC)

The +Suffix has been added in order to identify RoHS Compliance. See our web site for RoHS Compliance methodologies and qualifications.

Outline Drawing



Outline Dimensions (inch/mm)

A	B	C	D	E	F	G
.74	.90	.54	.50	.04	.16	.29
18.80	22.86	13.72	12.70	1.02	4.06	7.37

H	J	K	L	M	N	wt
.37	--	.122	.496	.106	.122	grams
9.40	--	3.10	12.60	2.69	3.10	20.0

Electrical Specifications

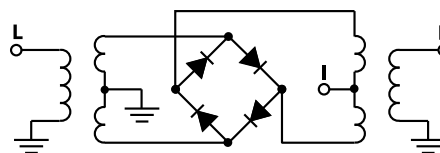
FREQUENCY (MHz)			CONVERSION LOSS* (dB)			LO-IF (IN) ISOLATION (dB)		LO-RF (OUT) ISOLATION (dB)		IP3 at center band (dBm)
IF (IN)	LO	RF (OUT)	Typ.	σ^{**}	Max.	Typ.	Min.	Typ.	Min.	Typ.
0.1-800	1100-4250	1100-3900	7.5	0.2	9.8	24	13	35	26	26

1 dB COMPR. +14 dBm typ.
* Conversion Loss at 30 MHz IF
** σ is a standard deviation

Typical Performance Data

Frequency (MHz)			Conversion Loss (dB)	Isolation L-I (dB)	Isolation L-R (dB)	VSWR RF (OUT) Port (:1)	VSWR LO Port (:1)
IF (IN)	LO	RF (OUT)	LO +17dBm	LO +17dBm	LO +17dBm	LO +17dBm	LO +17dBm
30.00	1110.10	1080.10	5.87	16.85	43.45	2.00	1.82
30.00	1210.10	1180.10	5.54	16.93	41.98	2.34	2.00
30.00	1410.10	1380.10	5.72	19.09	41.68	2.68	2.35
30.00	1590.10	1560.10	5.92	22.40	34.55	2.45	2.54
30.00	1690.10	1660.10	6.33	23.52	36.11	2.58	2.57
30.00	1870.10	1840.10	6.61	28.49	37.13	2.13	2.62
30.00	2050.10	2020.10	6.75	39.92	36.77	1.40	2.49
30.00	2230.10	2200.10	7.31	38.90	41.79	1.55	2.42
30.00	2410.10	2380.10	6.70	35.55	36.50	2.35	1.90
30.00	2490.10	2460.10	7.17	32.90	35.94	2.31	1.90
30.00	2670.10	2640.10	7.43	27.66	36.16	3.87	1.49
30.00	2850.10	2820.10	7.24	22.55	31.49	3.50	1.26
30.00	2950.10	2920.10	6.76	23.39	32.11	2.68	1.05
30.00	3030.10	3000.10	6.31	23.71	30.81	2.34	1.09
30.00	3210.10	3180.10	6.03	26.80	33.00	2.63	1.35
30.00	3490.10	3460.10	6.50	25.83	30.89	2.01	1.63
30.00	3670.10	3640.10	6.86	24.76	29.44	1.93	1.93
30.00	3850.10	3820.10	7.23	27.98	29.14	2.22	2.47
30.00	4030.10	4000.10	8.19	29.33	30.14	3.37	2.96
30.00	4290.10	4260.10	9.02	27.06	31.38	4.26	3.37

Electrical Schematic



Mini-Circuits
ISO 9001 ISO 14001 AS 9100 CERTIFIED

P.O. Box 350166, Brooklyn, New York 11235-0003 (718) 934-4500 Fax (718) 332-4661 The Design Engineers Search Engine Provides ACTUAL Data Instantly at minicircuits.com

IF/RF MICROWAVE COMPONENTS

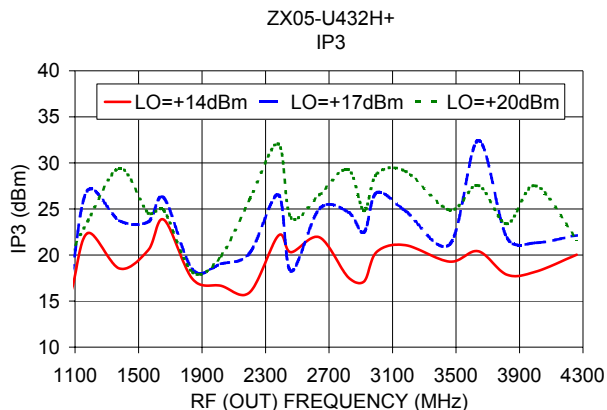
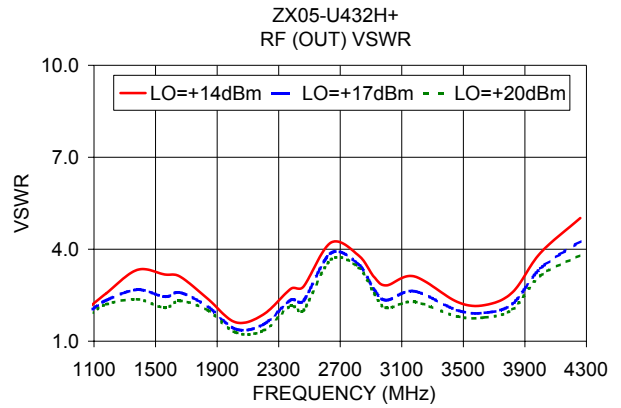
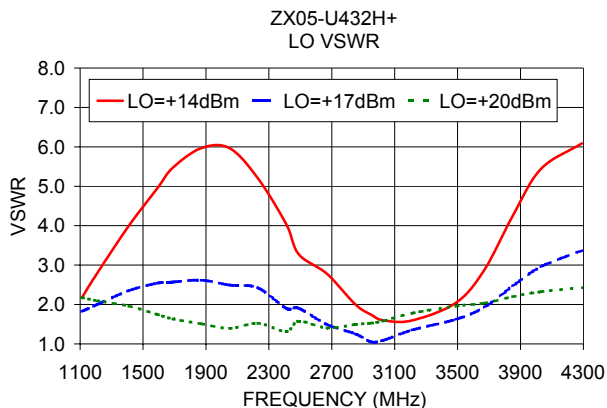
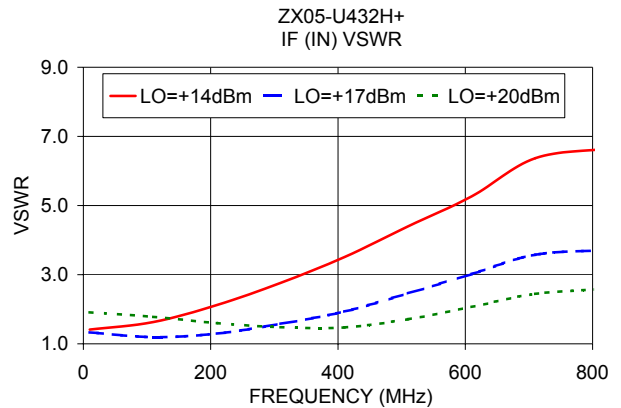
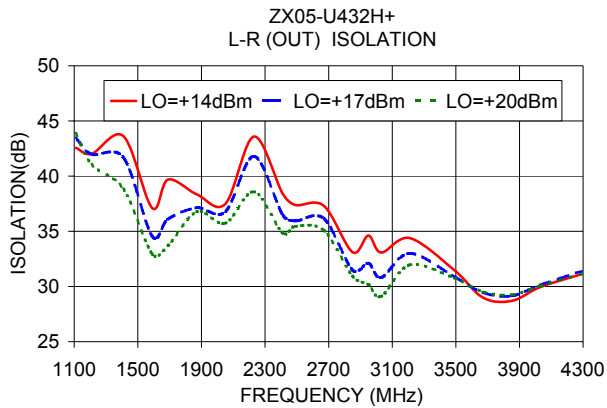
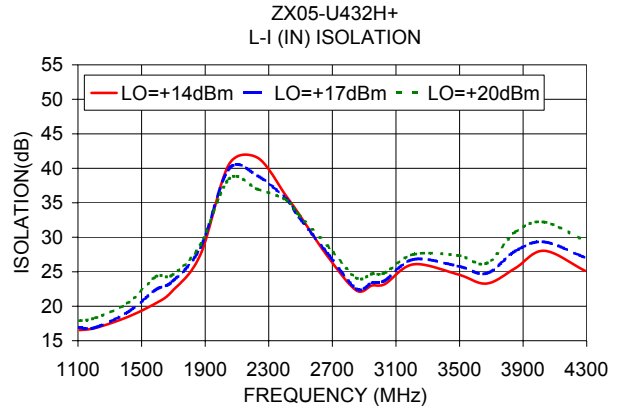
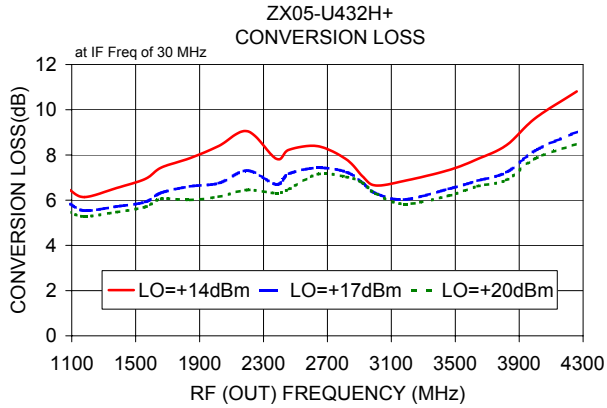
For detailed performance specs & shopping online see web site

Notes: 1. Performance and quality attributes and conditions not expressly stated in this specification sheet are intended to be excluded and do not form a part of this specification sheet. 2. Electrical specifications and performance data contained herein are based on Mini-Circuits' applicable established test performance criteria and measurement instructions. 3. The parts covered by this specification sheet are subject to Mini-Circuits standard limited warranty and terms and conditions (collectively, "Standard Terms"); Purchasers of this part are entitled to the rights and benefits contained therein. For a full statement of the Standard Terms and the exclusive rights and remedies thereunder, please visit Mini-Circuits' website at www.minicircuits.com/MCLStore/terms.jsp.

REV. OR
M112971
ZX05-U432H+
DJ/CP/AM
140114

Performance Charts

ZX05-U432H+



ISO 9001 ISO 14001 AS 9100 CERTIFIED

P.O. Box 350166, Brooklyn, New York 11235-0003 (718) 934-4500 Fax (718) 332-4661 The Design Engineers Search Engine Provides ACTUAL Data Instantly at minicircuits.com

IF/RF MICROWAVE COMPONENTS

For detailed performance specs & shopping online see web site

Notes: 1. Performance and quality attributes and conditions not expressly stated in this specification sheet are intended to be excluded and do not form a part of this specification sheet. 2. Electrical specifications and performance data contained herein are based on Mini-Circuit's applicable established test performance criteria and measurement instructions. 3. The parts covered by this specification sheet are subject to Mini-Circuits standard limited warranty and terms and conditions (collectively, "Standard Terms"); Purchasers of this part are entitled to the rights and benefits contained therein. For a full statement of the Standard Terms and the exclusive rights and remedies thereunder, please visit Mini-Circuits' website at www.minicircuits.com/MCLStore/terms.jsp.