

Coaxial Frequency Mixer

Level 13 (LO Power +13 dBm) 10 to 2400 MHz

ZEM-M2TMH+ ZEM-M2TMH



CASE STYLE: V37

Connectors	Model	Price	Qty.
SMA	ZEM-M2TMH(+)	\$114.95	(1-9)

+ RoHS compliant in accordance with EU Directive (2002/95/EC)

The +Suffix identifies RoHS Compliance. See our web site for RoHS Compliance methodologies and qualifications.

Maximum Ratings

Operating Temperature	-55°C to 100°C
Storage Temperature	-55°C to 100°C
RF Power	200mW
IF Current	40mA

Permanent damage may occur if any of these limits are exceeded.

Coaxial Connections

LO	3
RF	2
IF	1

Features

- low conversion loss, 6.9 dB typ.
- excellent isolation, 43 dB typ. L-R, 44 dB typ. L-I
- wideband, 10 to 2400 MHz

Applications

- VHF/UHF
- cellular
- GPS

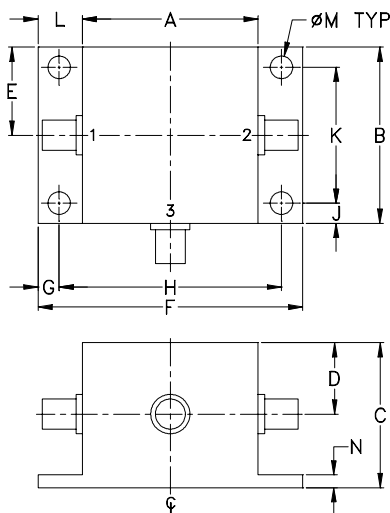
Electrical Specifications

FREQUENCY (MHz)	CONVERSION LOSS (dB)	LO-RF ISOLATION (dB)			LO-IF ISOLATION (dB)					
		L	M	U	L	M	U			
10-2400	6.9	49	43	42	49	40	44	30	40	30

1 dB COMP.: +9 dBm typ.

L = low range [f_L to $10 f_L$] M = mid range [$10 f_L$ to $f_U/2$] U = upper range [$f_U/2$ to f_U]
m = mid band [$2f_L$ to $f_U/2$]

Outline Drawing



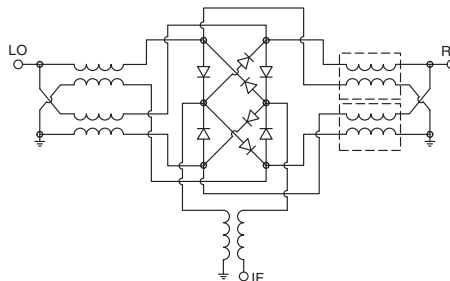
Outline Dimensions (inch/mm)

A	B	C	D	E	F	G
.83	.83	.75	.37	.42	1.25	.10
21.08	21.08	19.05	9.40	10.67	31.75	2.54
H	J	K	L	M	N	wt
1.050	.10	.640	.21	.106	.06	grams
26.67	2.54	16.26	5.33	2.69	1.52	22.0

Typical Performance Data

Frequency (MHz)		Conversion Loss (dB)	Isolation L-R (dB)	Isolation L-I (dB)	VSWR RF Port (:1)	VSWR LO Port (:1)
RF	LO	LO +13dBm	LO +13dBm	LO +13dBm	LO +13dBm	LO +13dBm
10.00	40.00	6.87	48.7	47.5	1.06	1.43
25.00	55.00	6.77	48.7	47.4	1.02	1.43
40.00	70.00	6.83	48.9	47.3	1.02	1.43
70.00	100.00	6.69	48.9	47.0	1.04	1.39
100.00	130.00	6.64	49.1	46.9	1.06	1.41
200.00	230.00	6.44	47.6	45.9	1.13	1.44
400.00	430.00	6.25	44.0	43.4	1.31	1.56
600.00	630.00	6.31	40.9	41.7	1.40	1.59
700.00	730.00	6.37	40.6	41.2	1.51	1.58
800.00	830.00	6.39	40.6	40.3	1.53	1.59
1000.00	1030.00	6.45	43.2	37.9	1.46	1.62
1200.00	1230.00	6.40	41.9	37.3	1.42	1.74
1300.00	1330.00	6.46	40.3	37.5	1.42	1.81
1500.00	1530.00	6.73	38.5	36.9	1.43	1.80
1700.00	1730.00	6.98	38.8	37.4	1.45	1.83
1800.00	1830.00	7.26	39.3	37.0	1.57	1.85
2000.00	2030.00	7.60	40.2	36.3	1.84	1.73
2200.00	2230.00	7.88	42.3	36.4	1.92	1.56
2300.00	2330.00	7.91	44.9	35.8	1.83	1.50
2400.00	2430.00	7.74	49.9	34.2	1.65	1.44

Electrical Schematic



Mini-Circuits
ISO 9001 ISO 14001 AS 9100 CERTIFIED

P.O. Box 350166, Brooklyn, New York 11235-0003 (718) 934-4500 Fax (718) 332-4661 The Design Engineers Search Engine Provides ACTUAL Data Instantly at minicircuits.com

IF/RF MICROWAVE COMPONENTS

For detailed performance specs & shopping online see web site

Notes: 1. Performance and quality attributes and conditions not expressly stated in this specification sheet are intended to be excluded and do not form a part of this specification sheet. 2. Electrical specifications and performance data contained herein are based on Mini-Circuit's applicable established test performance criteria and measurement instructions. 3. The parts covered by this specification sheet are subject to Mini-Circuit's standard limited warranty and terms and conditions (collectively, "Standard Terms"); Purchasers of this part are entitled to the rights and benefits contained therein. For a full statement of the Standard Terms and the exclusive rights and remedies thereunder, please visit Mini-Circuit's website at www.minicircuits.com/MCLStore/terms.jsp.

REV. A
M98898
ZEM-M2TMH
DJ/TD/CP/AM
091006
Page 1 of 2

Performance Charts

ZEM-M2TMH+ ZEM-M2TMH

