

Coaxial Frequency Mixer

ZX05-C24LH+

Level 10 (LO Power +10 dBm) 300 to 2400 MHz



CASE STYLE: FL905

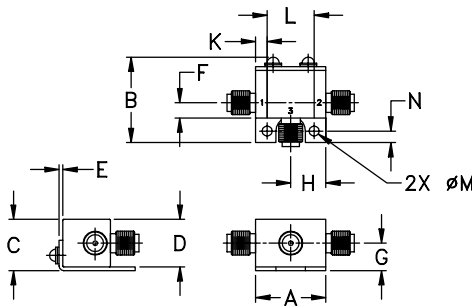
Maximum Ratings

Operating Temperature	-40°C to 85°C
Storage Temperature	-55°C to 100°C
RF Power	50mW
IF Current	40mA
Permanent damage may occur if any of these limits are exceeded.	

Coaxial Connections

LO	1
RF	2
IF	3

Outline Drawing



Outline Dimensions (inch/mm)

A	B	C	D	E	F	G
.74	.90	.54	.50	.04	.16	.29
18.80	22.86	13.72	12.70	1.02	4.06	7.37
H	J	K	L	M	N	wt
.37	--	.122	.496	.106	.122	grams
9.40	--	3.10	12.60	2.69	3.10	20.0

Features

- rugged construction
- small size
- low conversion loss
- high L-R isolation
- protected by US Patents 6,790,049 & 7,027,795

Applications

- cellular
- PCS
- instrumentation
- satellite communication

Electrical Specifications (T_{AMB}=25°C)

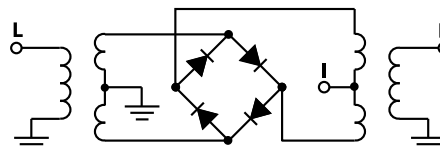
FREQUENCY (MHz)	CONVERSION LOSS (dB)	LO-RF ISOLATION (dB)		LO-IF ISOLATION (dB)		IP3 at center band (dBm)
		Typ.	Min.	Typ.	Min.	
300-2400	DC-700	40	25	30	15	13

1 dB COMP: +5 dBm typ.
m= mid band [2f_i to f_i/2]

Typical Performance Data

Frequency (MHz)	Conversion Loss (dB)	Isolation L-R (dB)	Isolation L-I (dB)	VSWR RF Port (:1)	VSWR LO Port (:1)
300.10	330.11	5.70	53.04	22.52	2.14
407.79	437.80	5.14	42.05	23.01	1.71
515.49	545.50	6.04	39.80	25.36	2.99
623.18	653.19	5.94	59.61	26.76	3.24
730.87	760.88	5.61	41.90	25.22	2.83
838.56	868.57	6.00	40.08	27.63	3.36
1000.10	1030.11	6.03	41.25	22.89	3.20
1107.79	1137.80	6.16	41.82	25.12	3.28
1215.49	1245.50	6.05	42.41	29.02	3.01
1323.18	1353.19	6.48	42.37	31.66	2.92
1430.87	1460.88	5.53	41.58	31.62	2.07
1538.56	1568.57	4.92	39.23	29.26	1.12
1700.10	1730.11	5.02	34.19	28.15	1.14
1807.79	1837.80	5.33	35.50	25.13	1.43
1915.49	1945.50	5.45	33.18	24.10	1.53
2023.18	2053.19	5.80	32.63	24.63	2.05
2130.87	2160.88	6.86	33.32	29.00	2.74
2346.25	2376.26	5.93	36.33	23.52	1.98
2400.10	2370.09	6.03	34.46	24.94	1.98

Electrical Schematic



Mini-Circuits
ISO 9001 ISO 14001 AS 9100 CERTIFIED

For detailed performance specs & shopping online see web site

P.O. Box 350166, Brooklyn, New York 11235-0003 (718) 934-4500 Fax (718) 332-4661 The Design Engineers Search Engine www.minicircuits.com Provides ACTUAL Data Instantly at minicircuits.com

IF/RF MICROWAVE COMPONENTS

Notes: 1. Performance and quality attributes and conditions not expressly stated in this specification sheet are intended to be excluded and do not form a part of this specification sheet. 2. Electrical specifications and performance data contained herein are based on Mini-Circuit's applicable established test performance criteria and measurement instructions. 3. The parts covered by this specification sheet are subject to Mini-Circuits standard limited warranty and terms and conditions (collectively, "Standard Terms"); Purchasers of this part are entitled to the rights and benefits contained therein. For a full statement of the Standard Terms and the exclusive rights and remedies thereunder, please visit Mini-Circuits' website at www.minicircuits.com/MCLStore/terms.jsp.

REV. D
M108294
ZX05-C24LH
RVN/TD/CP/AM
091007
Page 1 of 2

