

# Coaxial Frequency Mixer

## ZMX-8GLH

Level 10 (LO Power +10 dBm) 3700 to 8000 MHz

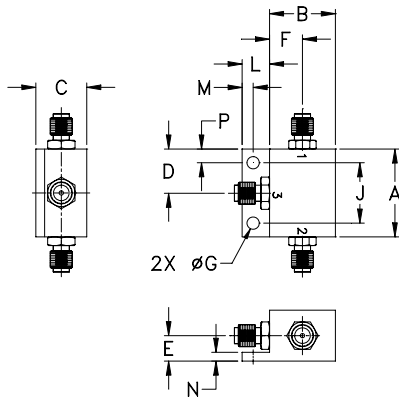
### Maximum Ratings

Operating Temperature	-55°C to 100°C
Storage Temperature	-55°C to 100°C
RF Power	50mW
IF Current	40mA

### Coaxial Connections

LO	1
RF	2
IF	3

### Outline Drawing



### Outline Dimensions (inch/mm)

A	B	C	D	E	F	G	H	
1.00	.75	.58	.50	.29	.38	.140	--	
25.40	19.05	14.73	12.70	7.37	9.65	3.56	--	
J	K	L	M	N	P		wt	
.687	--	.32	.13	.10	.16		grams	
17.45	--	8.13	3.30	2.54	4.06		25.0	

### Features

- wide frequency range, 3700 to 8000 MHz
- low conversion loss, 5.5 dB typ.
- high L-R isolation, 40 dB typ.

### Applications

- SATCOM
- instrumentation
- defense & federal communications
- SHF



CASE STYLE: BU413

Connectors	Model	Price	Qty.
SMA	ZMX-8GLH	\$74.95 ea.	(1-9)

### Electrical Specifications

FREQUENCY (MHz)	CONVERSION LOSS* (dB)	LO-RF ISOLATION (dB)		LO-IF ISOLATION (dB)	
		Typ.	Min.	Typ.	Min.
3700-8000	DC-2000	40	20	18	8

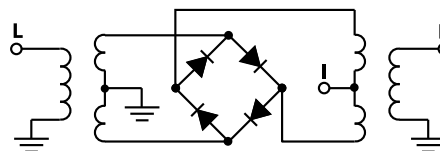
1 dB COMP.: +5 dBm typ.

\* Above 750 MHz IF, conversion loss increases up to 9.8 dB max.

### Typical Performance Data

Frequency (MHz)	Conversion Loss (dB)	Isolation L-R (dB)	Isolation L-I (dB)	VSWR RF Port (:1)		VSWR LO Port (:1)	
				LO	LO	LO	LO
				+10dBm	+10dBm	+10dBm	+10dBm
3700.00	3730.00	5.07	34.59	10.57	5.02	1.98	
3918.64	3948.64	5.14	34.05	11.06	5.42	1.90	
4000.00	4030.00	5.12	34.96	11.46	5.47	2.04	
4283.05	4313.05	5.15	40.84	12.40	5.55	2.28	
4574.58	4604.58	4.92	41.61	13.36	6.15	2.32	
4866.10	4896.10	4.80	37.25	14.74	5.69	2.46	
5000.00	4970.00	4.54	39.42	15.24	5.09	2.46	
5303.39	5273.39	4.35	44.52	16.07	3.30	2.51	
5594.92	5564.92	4.53	45.25	16.55	2.15	2.32	
5886.44	5856.44	5.22	47.16	17.07	1.77	2.56	
6000.00	5970.00	5.01	40.82	17.08	1.74	2.61	
6323.73	6293.73	4.46	37.37	17.40	1.73	2.28	
6615.25	6585.25	4.28	34.74	17.53	1.64	1.87	
6906.78	6876.78	4.30	34.56	17.94	1.59	1.81	
7000.00	6970.00	4.29	34.69	18.21	1.55	2.13	
7271.19	7241.19	4.28	32.95	18.54	1.40	1.76	
7562.71	7532.71	4.48	30.79	18.69	1.25	1.27	
7854.24	7824.24	4.94	31.13	19.25	1.13	1.29	
7927.12	7897.12	5.07	31.80	19.44	1.10	1.27	
8000.00	7970.00	5.20	32.79	19.74	1.08	1.28	

### Electrical Schematic



**Mini-Circuits**  
ISO 9001 ISO 14001 AS 9100 CERTIFIED

For detailed performance specs & shopping online see web site

P.O. Box 350166, Brooklyn, New York 11235-0003 (718) 934-4500 Fax (718) 332-4661 The Design Engineers Search Engine [www.minicircuits.com](http://www.minicircuits.com) Provides ACTUAL Data Instantly at [minicircuits.com](http://www.minicircuits.com)

Notes: 1. Performance and quality attributes and conditions not expressly stated in this specification sheet are intended to be excluded and do not form a part of this specification sheet. 2. Electrical specifications and performance data contained herein are based on Mini-Circuit's applicable established test performance criteria and measurement instructions. 3. The parts covered by this specification sheet are subject to Mini-Circuit's standard limited warranty and terms and conditions (collectively, "Standard Terms"); Purchasers of this part are entitled to the rights and benefits contained therein. For a full statement of the Standard Terms and the exclusive rights and remedies thereunder, please visit Mini-Circuit's website at [www.minicircuits.com/MCLStore/terms.jsp](http://www.minicircuits.com/MCLStore/terms.jsp).

REV. C  
M93711  
ZMX-8GLH  
DJ/TD/CP/AM  
081106  
Page 1 of 2

