

Coaxial Frequency Mixer

ZX05-5+

Level 7 (LO Power +7 dBm) 5 to 1500 MHz



CASE STYLE: FL905

Connectors	Model	Price	Qty.
SMA	ZX05-5-S+	\$37.95 ea.	(1-24)

+ RoHS compliant in accordance with EU Directive (2002/95/EC)

The +Suffix has been added in order to identify RoHS Compliance. See our web site for RoHS Compliance methodologies and qualifications.

Maximum Ratings

Operating Temperature	-40°C to 85°C
Storage Temperature	-55°C to 100°C
RF Power	50mW
IF Current	40mA
Permanent damage may occur if any of these limits are exceeded.	

Coaxial Connections

LO	1
RF	2
IF	3

Features

- rugged construction
- small size
- low conversion loss
- high L-R isolation
- protected by US Patents 6,133,525 & 6,790,049

Applications

- cellular
- PCS
- instrumentation
- satellite communication

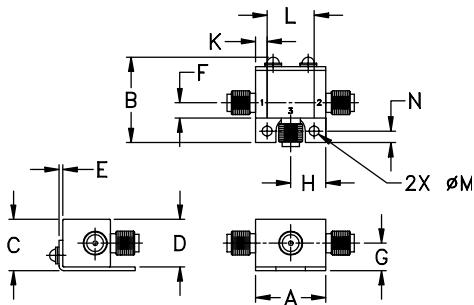
Electrical Specifications (T_{AMB}=25°C)

FREQUENCY (MHz)	CONVERSION LOSS (dB)	LO-RF ISOLATION (dB)			LO-IF ISOLATION (dB)			IP3 at center band (dBm)					
		L	M	U	L	M	U						
5-1500	DC-1000	50	40	25	33	23	50	40	30	20	20	10	15

1 dB COMP: +1 dBm typ.
Positive detection: positive output with in-phase RF & LO signals

L = low range [f_1 to $10 f_1$]
M = mid range [$10 f_1$ to $f_1/2$]
U = upper range [$f_1/2$ to f_1]

Outline Drawing



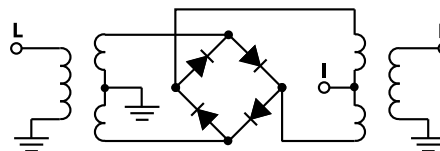
Outline Dimensions (inch/mm)

A	B	C	D	E	F	G
.74	.90	.54	.50	.04	.16	.29
18.80	22.86	13.72	12.70	1.02	4.06	7.37
H	J	K	L	M	N	wt
.37	--	.122	.496	.106	.122	grams
9.40	--	3.10	12.60	2.69	3.10	20.0

Typical Performance Data

Frequency (MHz)		Conversion Loss (dB)	Isolation L-R (dB)	Isolation L-I (dB)	VSWR RF Port (:1)	VSWR LO Port (:1)
RF	LO	LO +7dBm	LO +7dBm	LO +7dBm	LO +7dBm	LO +7dBm
5.10	35.10	6.93	82.10	96.28	1.48	1.83
35.10	65.10	6.51	65.10	76.81	1.38	1.80
50.10	80.10	6.48	61.74	69.65	1.37	1.80
100.10	70.10	6.60	55.18	56.54	1.36	1.77
171.43	141.43	6.54	50.58	45.84	1.35	1.80
254.10	224.10	6.51	47.52	39.83	1.33	1.78
336.77	306.77	6.56	45.52	36.24	1.32	1.78
419.43	389.43	6.63	43.47	34.05	1.31	1.78
502.10	472.10	6.58	42.13	31.97	1.30	1.81
584.77	554.77	6.56	40.92	30.53	1.28	1.82
667.43	637.43	6.64	37.49	29.33	1.25	1.84
750.10	720.10	6.78	35.27	28.03	1.24	1.87
831.53	801.53	6.81	34.84	25.74	1.19	1.90
934.39	904.39	6.70	33.83	23.60	1.09	1.91
1037.24	1007.24	6.59	33.85	22.24	1.05	1.97
1140.10	1110.10	6.66	33.64	21.45	1.20	2.09
1242.96	1212.96	7.02	32.75	20.75	1.41	2.22
1345.81	1315.81	7.39	31.63	18.60	1.62	2.15
1448.67	1418.67	7.75	29.54	17.12	1.84	2.01
1500.10	1470.10	7.94	28.84	17.08	1.93	2.06

Electrical Schematic



Mini-Circuits
ISO 9001 ISO 14001 AS 9100 CERTIFIED

P.O. Box 350166, Brooklyn, New York 11235-0003 (718) 934-4500 Fax (718) 332-4661 The Design Engineers Search Engine Provides ACTUAL Data Instantly at minicircuits.com

IF/RF MICROWAVE COMPONENTS

For detailed performance specs & shopping online see web site

Notes: 1. Performance and quality attributes and conditions not expressly stated in this specification sheet are intended to be excluded and do not form a part of this specification sheet. 2. Electrical specifications and performance data contained herein are based on Mini-Circuit's applicable established test performance criteria and measurement instructions. 3. The parts covered by this specification sheet are subject to Mini-Circuit's standard limited warranty and terms and conditions (collectively, "Standard Terms"); Purchasers of this part are entitled to the rights and benefits contained therein. For a full statement of the Standard Terms and the exclusive rights and remedies thereunder, please visit Mini-Circuit's website at www.minicircuits.com/MCLStore/terms.jsp.

REV. D
M108294
ZX05-5
RVN/TD/CP/AM
091007
Page 1 of 2

