

# Coaxial Frequency Mixer

## ZLW-6+ ZLW-6

Level 7 (LO Power +7 dBm) 0.003 to 100 MHz



CASE STYLE: M21

### Maximum Ratings

Operating Temperature	-55°C to 100°C
Storage Temperature	-55°C to 100°C
RF Power	50mW
IF Current	40mA

Permanent damage may occur if any of these limits are exceeded.

### Coaxial Connections

LO	1
RF	3
IF	2

### Features

- low conversion loss, 4.58 dB typ.
- high L-R isolation, 45 dB typ., L-I, 40 dB typ.
- rugged shielded case

### Applications

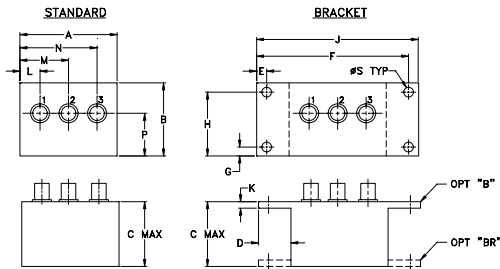
- VHF
- AM radio
- instrumentation

Connectors	Model	Price	Qty.
SMA	ZLW-6+	\$64.95 ea.	(1-9)
BRACKET (OPTION "B")		\$5.00	(1+)
BRACKET (OPTION "BR")		\$1.50	(1+)

**+ RoHS compliant in accordance with EU Directive (2002/95/EC)**

The +Suffix identifies RoHS Compliance. See our web site for RoHS Compliance methodologies and qualifications.

### Outline Drawing



### Outline Dimensions (inch/mm)

A	B	C	D	E	F	G	H
1.50	1.13	1.00	.50	.155	2.345	.138	.987
38.10	28.70	25.40	12.70	3.94	59.56	3.51	25.07

J	K	L	M	N	P	S	wt
2.50	.10	.31	.75	1.19	.66	.150	grams
63.50	2.54	7.87	19.05	30.23	16.76	3.81	40.0

### Electrical Specifications

FREQUENCY (MHz)	CONVERSION LOSS (dB)	LO-RF ISOLATION (dB)			LO-IF ISOLATION (dB)												
		L	M	U	L	M	U										
0.003-100	DC-100	4.58	0.05	7.5	8.5	60	50	45	30	35	25	60	45	40	25	30	25

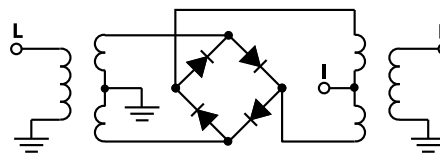
1 dB COMP.: +1 dBm typ.

L = low range [ $f_L$  to  $10 f_L$ ] M = mid range [ $10 f_L$  to  $f_U/2$ ] U = upper range [ $f_U/2$  to  $f_U$ ]  
m = mid band [ $2f_L$  to  $f_U/2$ ]

### Typical Performance Data

Frequency (MHz)	Conversion Loss (dB)	VSWR RF Port (:1)	Frequency (MHz)	Isolation L-R (dB)	Isolation L-I (dB)	VSWR LO Port (:1)	
							RF Port (:1)
0.25	30.25	4.69	1.18	0.25	87.94	69.25	2.72
0.50	30.50	4.70	1.21	2.20	88.51	67.15	2.60
1.00	31.00	4.72	1.23	5.13	80.05	62.74	2.56
2.00	32.00	4.71	1.23	10.00	74.49	58.28	2.48
4.00	34.00	4.72	1.25	30.00	65.04	46.76	2.43
6.00	36.00	4.75	1.26	35.00	61.86	45.54	2.42
8.00	38.00	4.77	1.25	40.00	58.66	43.62	2.43
10.00	40.00	4.77	1.24	45.00	62.82	41.15	2.44
15.00	45.00	4.75	1.24	49.00	62.74	40.69	2.45
19.00	49.00	4.72	1.23	53.00	59.34	40.12	2.47
23.00	53.00	4.69	1.20	57.00	55.11	40.91	2.50
31.00	61.00	5.04	1.19	61.00	51.93	41.11	2.55
39.00	69.00	5.21	1.17	65.00	50.11	39.64	2.58
51.00	81.00	5.29	1.22	69.00	48.56	38.35	2.62
61.00	91.00	5.51	1.37	73.00	47.39	36.57	2.65
67.00	97.00	5.71	1.44	81.00	45.06	33.06	2.70
70.00	100.00	5.80	1.46	85.00	44.27	31.87	2.74
85.00	115.00	5.84	1.41	92.50	43.42	30.32	2.89
92.50	122.50	5.90	1.24	96.25	43.22	30.02	2.98
100.00	130.00	5.93	1.12	100.00	42.87	30.05	3.06

### Electrical Schematic



**Mini-Circuits**  
ISO 9001 ISO 14001 AS 9100 CERTIFIED

For detailed performance specs & shopping online see web site

P.O. Box 350166, Brooklyn, New York 11235-0003 (718) 934-4500 Fax (718) 332-4661 The Design Engineers Search Engine [www.minicircuits.com](http://www.minicircuits.com) Provides ACTUAL Data Instantly at [minicircuits.com](http://minicircuits.com)

IF/RF MICROWAVE COMPONENTS

Notes: 1. Performance and quality attributes and conditions not expressly stated in this specification sheet are intended to be excluded and do not form a part of this specification sheet. 2. Electrical specifications and performance data contained herein are based on Mini-Circuit's applicable established test performance criteria and measurement instructions. 3. The parts covered by this specification sheet are subject to Mini-Circuit's standard limited warranty and terms and conditions (collectively, "Standard Terms"); Purchasers of this part are entitled to the rights and benefits contained therein. For a full statement of the Standard Terms and the exclusive rights and remedies thereunder, please visit Mini-Circuit's website at [www.minicircuits.com/MCLStore/terms.jsp](http://www.minicircuits.com/MCLStore/terms.jsp).

REV. A  
M118133  
ZLW-6  
DJ/TD/CP/AM  
080606  
Page 1 of 2

## Performance Charts

