

Frequency Mixer WIDE BAND

ZX05-73L+

Level 4 (LO Power +4 dBm) 2400 to 7000 MHz



Maximum Ratings

Operating Temperature	-40°C to 85°C
Storage Temperature	-55°C to 100°C
RF Power	50mW

Permanent damage may occur if any of these limits are exceeded.

Coaxial Connections

LO	2
RF	3
IF	1

Features

- wide bandwidth, 2400 to 7000 MHz
- low conversion loss, 6.2 dB typ.
- high L-R isolation, 30 dB typ.
- excellent IF BW, DC to 3000 MHz
- rugged construction
- small size
- useable as up and down converter
- protected by US patents, 6,790,049 and 7,027,795

Applications

- satellite up and down converters
- defense radar and communications
- line of sight links
- WIFI
- blue tooth
- VSAT
- ISM

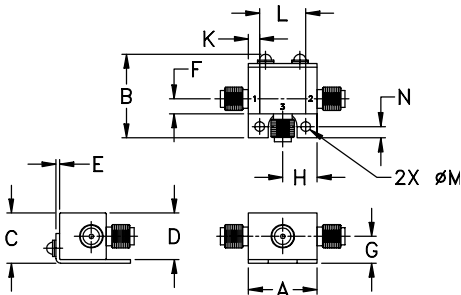
CASE STYLE: FL905

Connectors	Model	Price	Qty.
SMA	ZX05-73L-S+	\$48.95	(1-24)

+ RoHS compliant in accordance with EU Directive (2002/95/EC)

The +Suffix has been added in order to identify RoHS Compliance. See our web site for RoHS Compliance methodologies and qualifications.

Outline Drawing



Outline Dimensions (inch/mm)

A	B	C	D	E	F	G
.74	.90	.54	.50	.04	.16	.29
18.80	22.86	13.72	12.70	1.02	4.06	7.37
H	J	K	L	M	N	wt
.37	--	.122	.496	.106	.122	grams
9.40	--	3.10	12.60	2.69	3.10	20.0

Electrical Specifications

FREQUENCY (MHz)	CONVERSION LOSS* (dB)	LO-RF ISOLATION (dB)		LO-IF ISOLATION (dB)		IP3 at center band (dBm)
		Typ.	Min.	Typ.	Min.	
2400-7000	DC-3000					
2400-3200		6.6	0.1	33	27	10
3200-4200		6.1	0.1	30	26	12
4200-7000		6.0	0.2	23	16	9

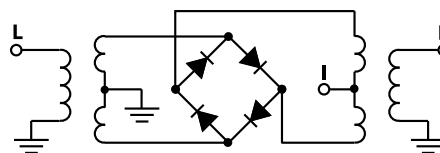
1 dB COMPR.: +1 dBm typ.

* Conversion loss at 30 MHz IF. σ is a measure of repeatability from unit to unit.

Typical Performance Data

Frequency (MHz)	Conversion Loss (dB)	Isolation L-R (dB)	Isolation L-I (dB)	VSWR RF Port (:1)	VSWR LO Port (:1)
2400.10	2430.10	7.09	36.72	18.75	2.80
2700.10	2730.10	6.93	33.49	21.40	1.79
3000.10	3030.10	6.76	30.70	23.16	1.87
3200.10	3230.10	6.81	30.48	25.44	1.91
3300.10	3330.10	6.84	30.61	26.57	2.00
3600.10	3630.10	6.64	30.53	28.14	2.24
3900.10	3930.10	6.41	31.12	31.02	1.94
4200.10	4230.10	6.50	28.90	28.74	1.84
4500.10	4530.10	6.14	26.88	19.45	1.93
4800.10	4830.10	6.62	26.76	14.66	2.09
5100.10	5130.10	6.67	25.23	14.59	2.38
5400.10	5430.10	6.25	23.60	15.75	2.75
5700.10	5730.10	6.35	22.83	17.68	2.95
6000.10	6030.10	6.21	21.59	20.51	2.76
6300.10	6330.10	6.12	20.54	24.64	2.18
6600.10	6630.10	6.18	19.39	26.49	1.54
6700.10	6730.10	6.22	19.20	26.64	1.37
6800.10	6830.10	6.13	19.15	26.57	1.25
6900.10	6930.10	6.02	18.83	27.11	1.13
7000.10	7030.10	6.04	18.34	26.85	1.05

Electrical Schematic



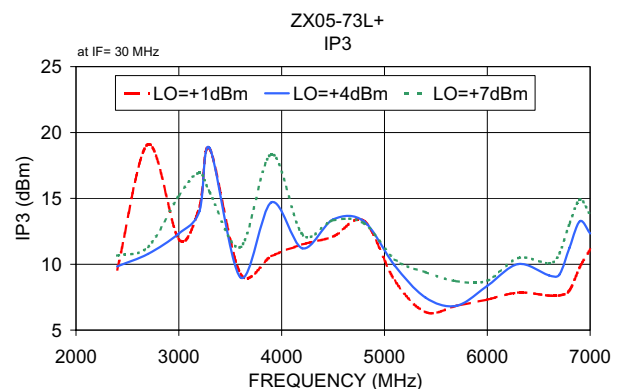
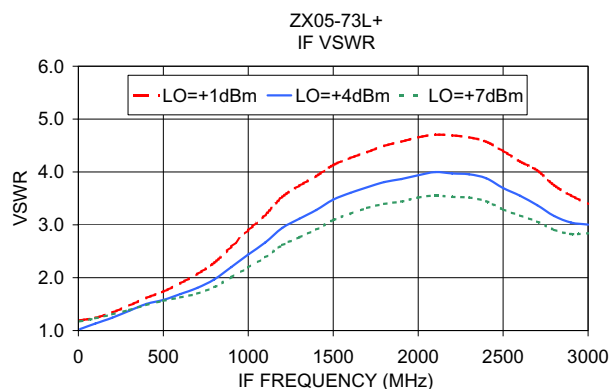
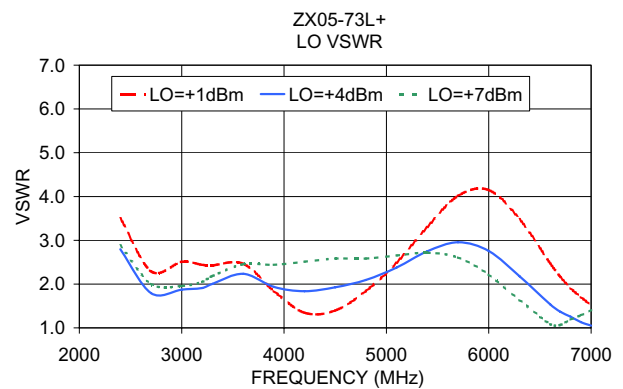
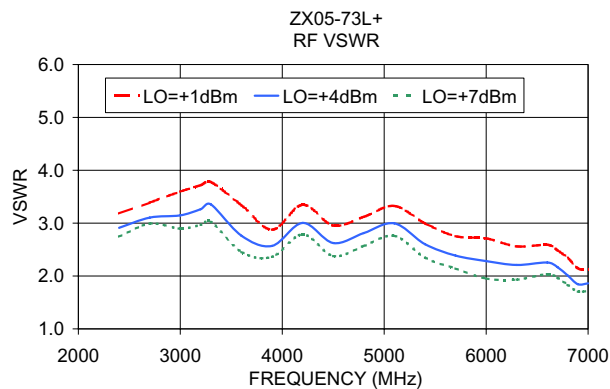
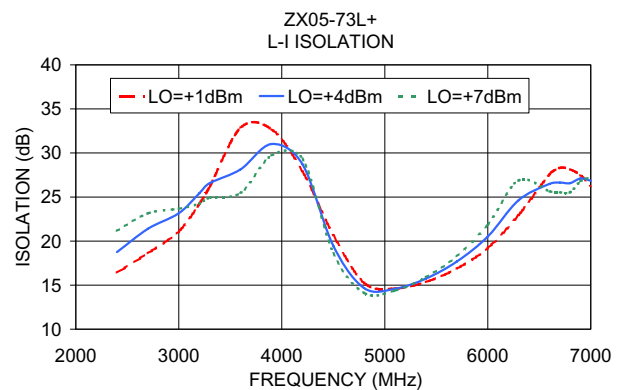
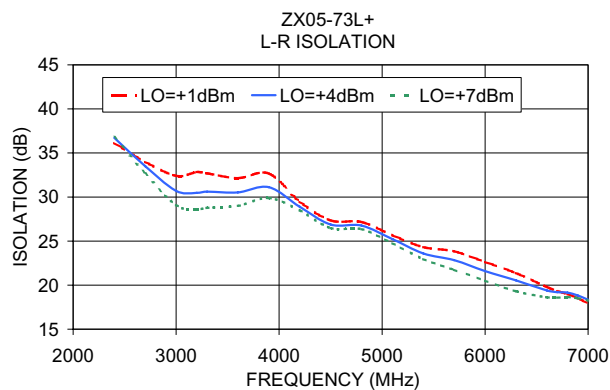
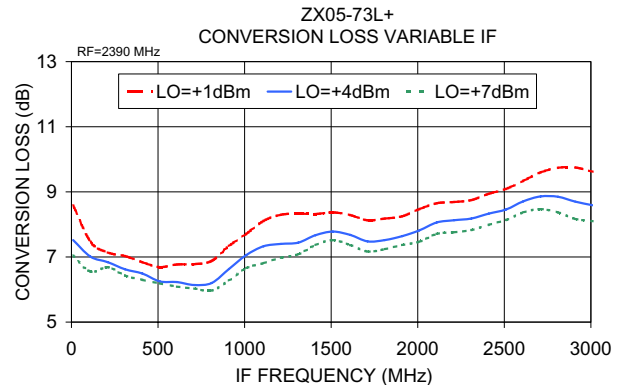
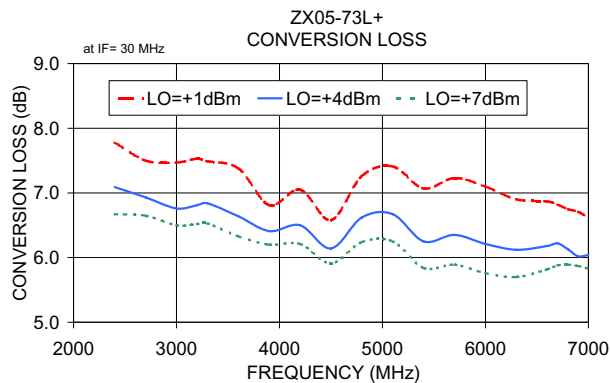
For detailed performance specs & shopping online see web site

P.O. Box 350166, Brooklyn, New York 11235-0003 (718) 934-4500 Fax (718) 332-4661 The Design Engineers Search Engine www.minicircuits.com Provides ACTUAL Data Instantly at minicircuits.com

IF/RF MICROWAVE COMPONENTS

Notes: 1. Performance and quality attributes and conditions not expressly stated in this specification sheet are intended to be excluded and do not form a part of this specification sheet. 2. Electrical specifications and performance data contained herein are based on Mini-Circuit's applicable established test performance criteria and measurement instructions. 3. The parts covered by this specification sheet are subject to Mini-Circuit's standard limited warranty and terms and conditions (collectively, "Standard Terms"); Purchasers of this part are entitled to the rights and benefits contained therein. For a full statement of the Standard Terms and the exclusive rights and remedies thereunder, please visit Mini-Circuit's website at www.minicircuits.com/MCLStore/terms.jsp.

REV. OR
M111660
ZX05-73L+
ED-12902/5
DJ/TD/QL/AM
091007
Page 1 of 2



P.O. Box 350166, Brooklyn, New York 11235-0003 (718) 934-4500 Fax (718) 332-4661 The Design Engineers Search Engine Provides ACTUAL Data Instantly at minicircuits.com

IF/RF MICROWAVE COMPONENTS

For detailed performance specs & shopping online see web site

Notes: 1. Performance and quality attributes and conditions not expressly stated in this specification sheet are intended to be excluded and do not form a part of this specification sheet. 2. Electrical specifications and performance data contained herein are based on Mini-Circuits' applicable established test performance criteria and measurement instructions. 3. The parts covered by this specification sheet are subject to Mini-Circuits standard limited warranty and terms and conditions (collectively, "Standard Terms"); Purchasers of this part are entitled to the rights and benefits contained therein. For a full statement of the Standard Terms and the exclusive rights and remedies thereunder, please visit Mini-Circuits' website at www.minicircuits.com/MCLStore/terms.jsp.