

Surface Mount Frequency Mixer

SCM-2500LH+ SCM-2500LH

Level 10 (LO Power +10 dBm) 500 to 2500 MHz



CASE STYLE: YY109
PRICE: \$13.95 ea. QTY (1-9)

Maximum Ratings

Operating Temperature	-40°C to 85°C
Storage Temperature	-55°C to 100°C
RF Power	50mW
IF Current	40mA
Permanent damage may occur if any of these limits are exceeded.	

Pin Connections

LO	1
RF	8
IF	3
GROUND	2,4,5,6,7

Features

- low conversion loss, 5.6 dB typ.
- wide bandwidth, 500 to 2500 MHz
- high L-R isolation, 35 dB typ.

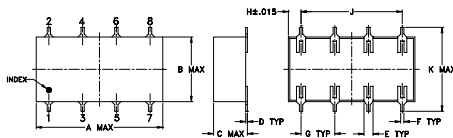
Applications

- UHF
- cellular
- satellite distribution

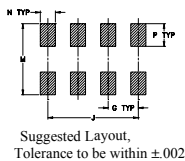
+RoHS Compliant

The +Suffix identifies RoHS Compliance. See our web site for RoHS Compliance methodologies and qualifications

Outline Drawing



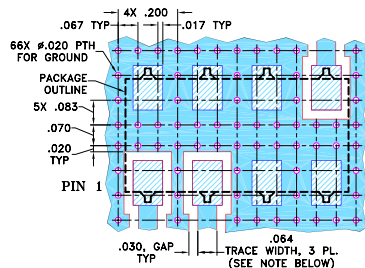
PCB Land Pattern



Outline Dimensions (inch)

A	B	C	D	E	F	G
.75	.38	.20	.010	.050	.020	.200
19.05	9.65	5.08	0.25	1.27	0.51	5.08
H	J	K	M	N	P	wt
.075	.600	.720	.740	.100	.150	grams
1.91	15.24	18.29	18.80	2.54	3.81	1.6

Demo Board MCL P/N: TB-171 Suggested PCB Layout (PL-130)



Electrical Specifications

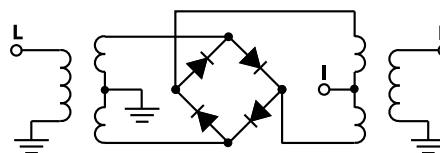
FREQUENCY (MHz)	CONVERSION LOSS (dB)	LO-RF ISOLATION (dB)		LO-IF ISOLATION (dB)		IP3 at center band (dBm)				
		Typ.	Min.	Typ.	Min.					
500-2500	DC-500	5.6	.20	6.8	10	35	22	18	10	16

1 dB COMP: +5 dBm typ.
m= mid band [2f_L to f_U/2]

Typical Performance Data

Frequency (MHz)		Conversion Loss (dB)	Isolation L-R (dB)	Isolation L-I (dB)	VSWR RF Port (:1)	VSWR LO Port (:1)
RF	LO	LO +7dBm	LO +7dBm	LO +7dBm	LO +7dBm	LO +7dBm
500.00	530.00	5.89	65.85	31.29	3.95	2.63
622.45	652.45	5.56	55.50	29.50	2.87	2.52
744.90	774.90	5.48	50.54	27.28	2.24	2.54
867.35	897.35	5.13	42.15	25.72	2.22	2.62
1000.00	1030.00	5.61	37.79	23.23	2.74	2.67
1112.24	1142.24	5.70	35.91	20.77	2.97	2.54
1250.00	1280.00	5.48	36.78	19.31	3.08	2.36
1357.14	1387.14	5.65	38.10	20.17	3.27	2.32
1479.59	1509.59	5.62	36.72	22.37	3.56	2.18
1520.41	1490.41	5.85	37.24	23.28	3.76	2.07
1642.86	1612.86	6.30	36.49	25.51	4.39	1.78
1765.31	1735.31	6.79	36.28	24.69	5.09	1.61
1887.76	1857.76	7.25	35.20	21.72	5.70	1.69
2010.20	1980.20	7.54	34.85	19.66	5.94	1.99
2051.02	2021.02	7.48	34.66	19.44	5.96	2.11
2173.47	2143.47	7.34	35.19	18.10	5.72	2.33
2295.92	2265.92	7.20	37.02	17.55	5.89	2.75
2377.55	2347.55	6.78	34.65	17.01	5.28	2.94
2459.18	2429.18	6.65	32.10	16.12	4.51	3.17
2500.00	2470.00	6.69	32.24	15.44	4.25	3.32

Electrical Schematic



Notes

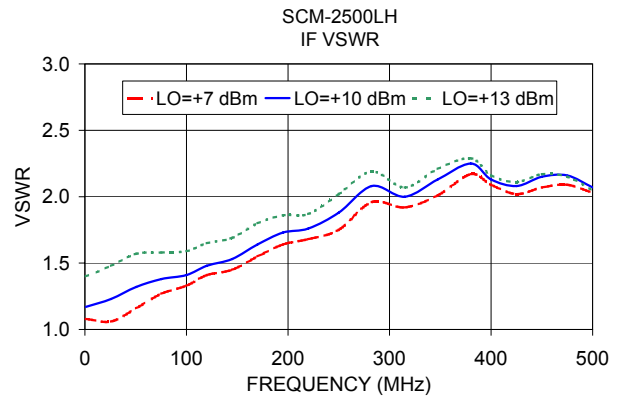
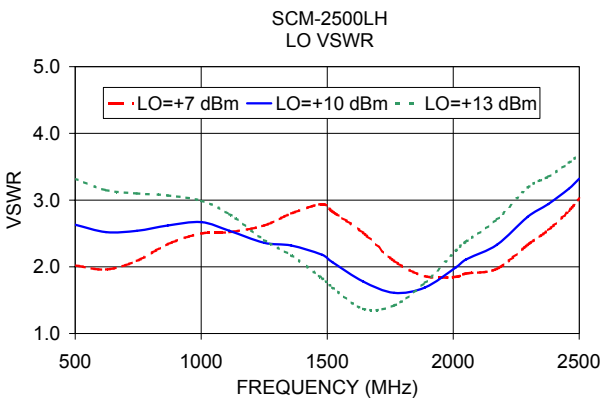
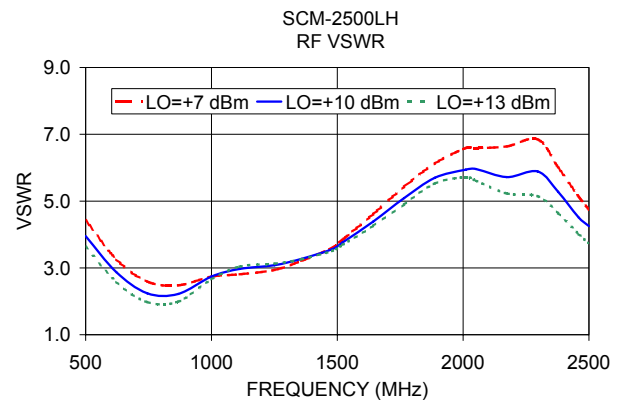
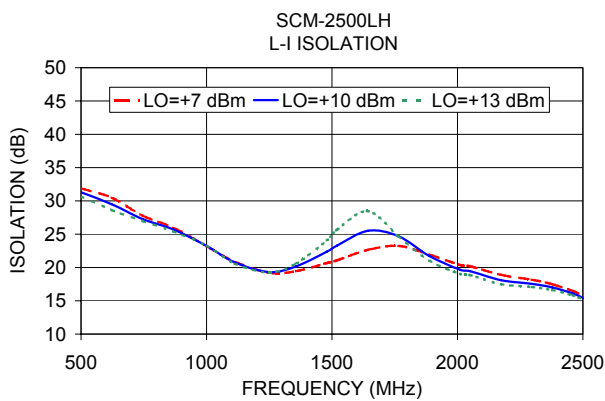
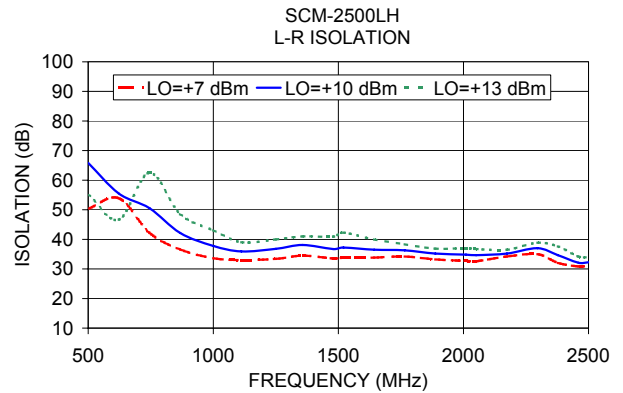
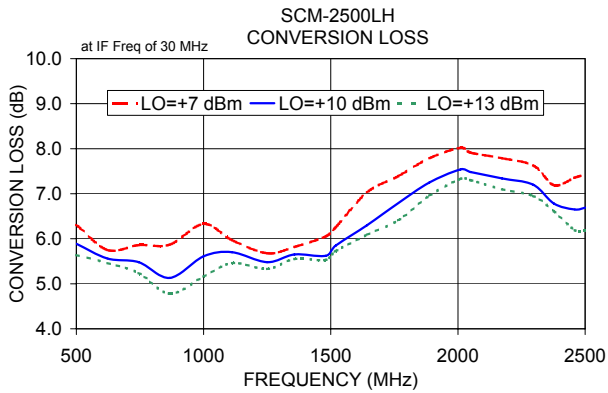
- Performance and quality attributes and conditions not expressly stated in this specification document are intended to be excluded and do not form a part of this specification document.
- Electrical specifications and performance data contained in this specification document are based on Mini-Circuit's applicable established test performance criteria and measurement instructions.
- The parts covered by this specification document are subject to Mini-Circuits standard limited warranty and terms and conditions (collectively, "Standard Terms"); Purchasers of this part are entitled to the rights and benefits contained therein. For a full statement of the Standard Terms and the exclusive rights and remedies thereunder, please visit Mini-Circuits' website at www.minicircuits.com/MCLStore/terms.jsp



www.minicircuits.com P.O. Box 35166, Brooklyn, NY 11235-0003 (718) 934-4500 sales@minicircuits.com

REV. A
M98898
SCM-2500LH
DJ/TD/CP
130925
Page 1 of 2

Performance Charts



Notes

- Performance and quality attributes and conditions not expressly stated in this specification document are intended to be excluded and do not form a part of this specification document.
- Electrical specifications and performance data contained in this specification document are based on Mini-Circuit's applicable established test performance criteria and measurement instructions.
- The parts covered by this specification document are subject to Mini-Circuits standard limited warranty and terms and conditions (collectively, "Standard Terms"); Purchasers of this part are entitled to the rights and benefits contained therein. For a full statement of the Standard Terms and the exclusive rights and remedies thereunder, please visit Mini-Circuits' website at www.minicircuits.com/MCLStore/terms.jsp

