

# Frequency Mixer

Level 7 (LO Power +7 dBm) 0.15 to 400 MHz

## TUF-3SM+



CASE STYLE: NNN150  
PRICE: \$10.10 ea. QTY (10)

**+RoHS Compliant**

The +Suffix Identifies RoHS Compliance. See our web site for RoHS Compliance methodologies and qualifications

### Maximum Ratings

Operating Temperature	-55°C to 100°C
Storage Temperature	-55°C to 100°C
RF Power	50mW
IF Current	40mA
Permanent damage may occur if any of these limits are exceeded.	

### Pin Connections

LO	4
RF	1
IF	2
GROUND	3
CASE GROUND	3

### Features

- low conversion loss, 4.7 dB typ.
- excellent L-R isolation, 46 dB typ.; L-I, 47 dB typ.
- rugged welded construction

### Applications

- HF/VHF
- defense & federal communication

### Electrical Specifications

FREQUENCY (MHz)	CONVERSION LOSS (dB)	LO-RF ISOLATION (dB)			LO-IF ISOLATION (dB)			IP3 @ CENTER BAND (dBm)										
		L	M	U	L	M	U											
0.15-400	DC-400	4.7	0.02	7.0	8.0	60	50	46	30	35	25	60	40	47	25	35	20	11

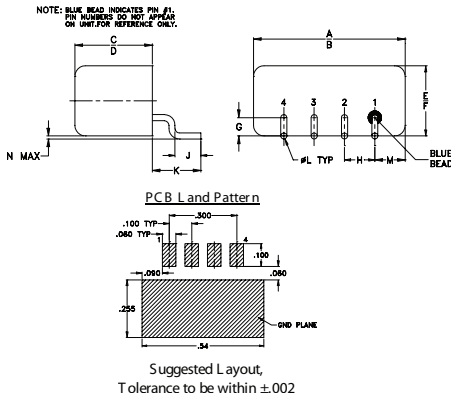
1 dB COMP.: +1 dBm typ.  
For phase detection, DC positive polarity with in-phase RF & LO.

L = 50-100 MHz M = 100-500 MHz U = upper range [ $f_c/2$  to  $f_u$ ]  
m = mid band [ $2f_c$  to  $f_u/2$ ]

### Typical Performance Data

Frequency (MHz)		Conversion Loss (dB)	VSWR RF Port (:1)	Frequency (MHz)	Isolation L-R (dB)	Isolation L-I (dB)	VSWR LO Port (:1)
RF	LO	LO +7dBm	LO +7dBm	LO	LO +7dBm	LO +7dBm	LO +7dBm
0.15	30.15	5.37	1.57	10.00	68.68	61.84	2.59
0.23	30.23	5.27	1.41	20.00	65.36	56.87	2.60
0.30	30.30	5.21	1.33	30.00	63.22	54.20	2.59
0.50	30.50	5.16	1.25	40.00	61.75	52.09	2.58
1.00	31.00	5.08	1.21	76.00	57.56	47.59	2.54
2.80	32.80	4.91	1.21	94.00	56.48	45.97	2.50
6.40	36.40	4.91	1.21	112.00	54.90	44.70	2.50
10.00	40.00	4.73	1.21	149.00	52.63	42.36	2.57
28.00	58.00	4.71	1.21	168.00	54.13	42.02	2.55
64.00	94.00	4.75	1.17	206.00	49.62	38.81	2.62
100.00	130.00	4.83	1.14	225.00	48.10	38.56	2.66
138.00	168.00	4.85	1.13	244.00	48.03	37.82	2.68
157.00	187.00	4.88	1.10	282.00	53.65	37.79	2.67
195.00	225.00	4.92	1.08	301.00	55.10	38.07	2.76
233.00	263.00	4.97	1.10	320.00	54.03	37.59	2.82
252.00	282.00	5.10	1.12	340.00	52.86	36.62	2.76
271.00	301.00	5.17	1.14	360.00	51.53	35.44	2.69
290.00	320.00	5.15	1.17	390.00	47.44	33.11	2.86
370.00	340.00	5.38	1.10	410.00	45.39	32.24	3.05
400.00	370.00	5.41	1.05	430.00	44.42	32.17	3.06

### Outline Drawing



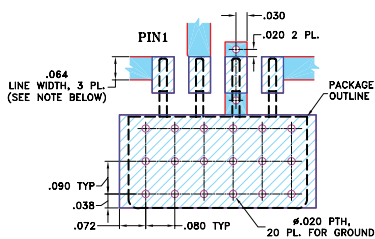
### Outline Dimensions (inch/mm)

A	B	C	D	E	F	G
.50	.48	.255	.240	.23	.21	.06
12.70	12.19	6.48	6.10	5.84	5.33	1.52

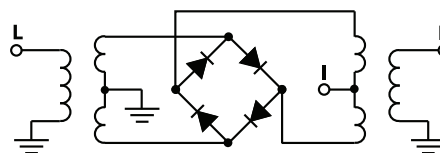
H	J	K	L	M	N	wt
.100	.09	.16	.020	.09	.005	grams
2.54	2.29	4.06	0.51	2.29	0.13	1.9

### Demo Board MCL PIN: TB-201 Suggested PCB Layout (PL-081)



- NOTES: 1. TRACE WIDTH IS SHOWN FOR ROGERS RO4350B WITH DIELECTRIC THICKNESS 0.030" ± 0.002"; COPPER: 1/2 OZ. EACH SIDE. FOR OTHER MATERIALS TRACE WIDTH MAY NEED TO BE MODIFIED.  
2. BOTTOM SIDE OF THE PCB IS CONTINUOUS GROUND PLANE.  
■ DENOTES PCB COPPER LAYOUT WITH SMOBC (SOLDER MASK OVER BARE COPPER)  
■ DENOTES COPPER LAND PATTERN FREE OF SOLDER MASK

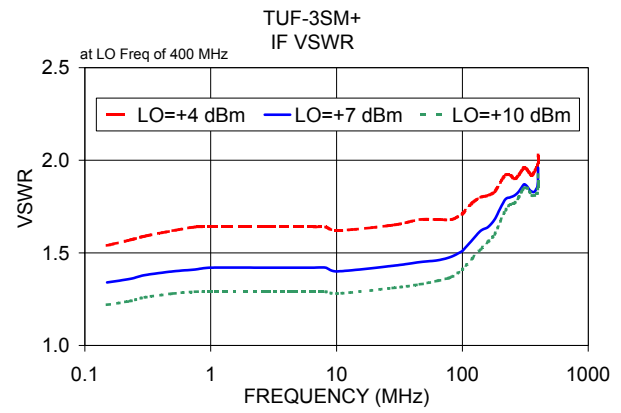
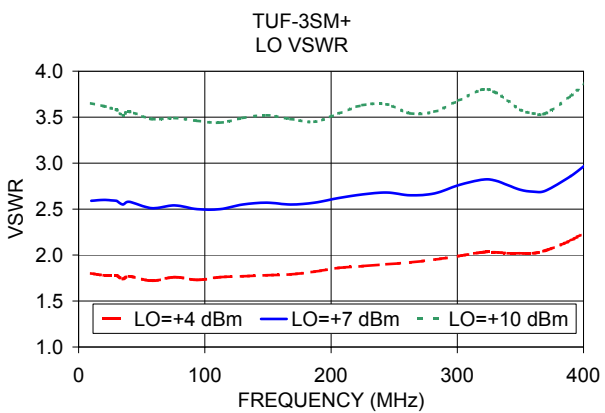
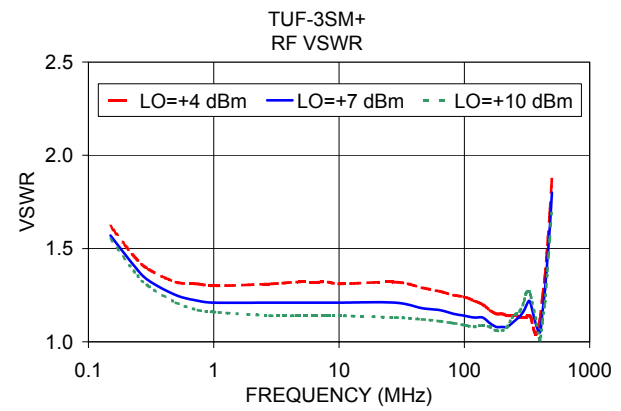
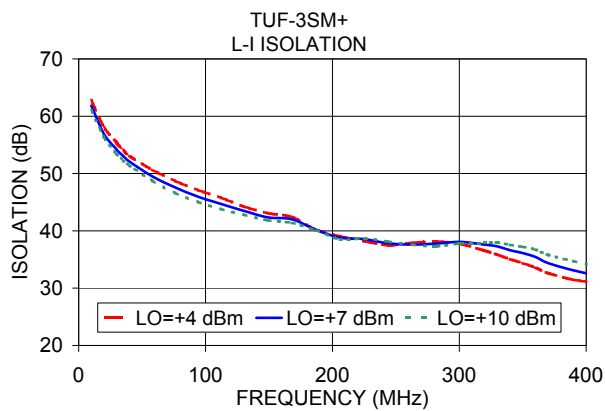
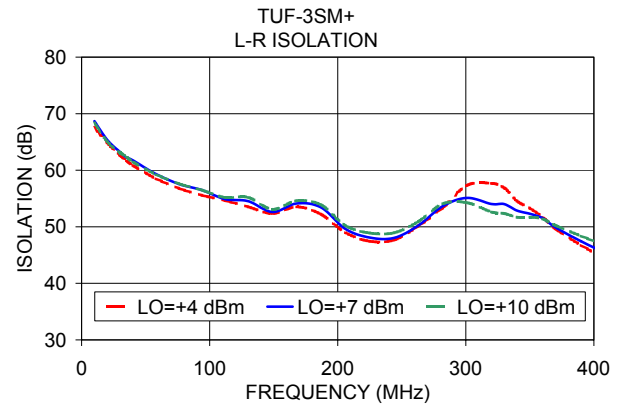
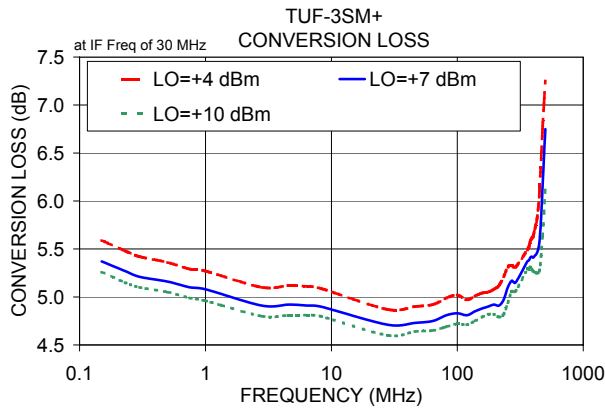
### Electrical Schematic



For detailed performance specs & shopping online see web site

P.O. Box 350166, Brooklyn, New York 11235-0003 (718) 934-4500 Fax (718) 332-4661 The Design Engineers Search Engine Provides ACTUAL Data Instantly at [minicircuits.com](http://minicircuits.com)

Notes: 1. Performance and quality attributes and conditions not expressly stated in this specification sheet are intended to be excluded and do not form a part of this specification sheet. 2. Electrical specifications and performance data contained herein are based on Mini-Circuit's applicable established test performance criteria and measurement instructions. 3. The parts covered by this specification sheet are subject to Mini-Circuit's standard limited warranty and terms and conditions (collectively, "Standard Terms"); Purchasers of this part are entitled to the rights and benefits contained therein. For a full statement of the Standard Terms and the exclusive rights and remedies thereunder, please visit Mini-Circuit's website at [www.minicircuits.com/MCLStore/terms.jsp](http://www.minicircuits.com/MCLStore/terms.jsp).



P.O. Box 350166, Brooklyn, New York 11235-0003 (718) 934-4500 Fax (718) 332-4661 *The Design Engineers Search Engine* Provides ACTUAL Data Instantly at [minicircuits.com](http://minicircuits.com)

IF/RF MICROWAVE COMPONENTS

For detailed performance specs & shopping online see web site

**Notes:** 1. Performance and quality attributes and conditions not expressly stated in this specification sheet are intended to be excluded and do not form a part of this specification sheet. 2. Electrical specifications and performance data contained herein are based on Mini-Circuit's applicable established test performance criteria and measurement instructions. 3. The parts covered by this specification sheet are subject to Mini-Circuits standard limited warranty and terms and conditions (collectively, "Standard Terms"); Purchasers of this part are entitled to the rights and benefits contained therein. For a full statement of the Standard Terms and the exclusive rights and remedies thereunder, please visit Mini-Circuits' website at [www.minicircuits.com/MCLStore/terms.jsp](http://www.minicircuits.com/MCLStore/terms.jsp).