

Frequency Mixer

Level 7 (LO Power +7 dBm) 50 to 1000 MHz

TUF-2SM+



CASE STYLE: NNN150
PRICE: \$9.20 ea. QTY (10)

+RoHS Compliant

The +Suffix identifies RoHS Compliance. See our web site for RoHS Compliance methodologies and qualifications

Maximum Ratings

Operating Temperature	-55°C to 100°C
Storage Temperature	-55°C to 100°C
RF Power	50mW
IF Current	40mA
Permanent damage may occur if any of these limits are exceeded.	

Pin Connections

LO	4
RF	1
IF	2
GROUND	3
CASE GROUND	3

Features

- low conversion loss, 5.85 dB typ.
- excellent L-R isolation, 47 dB typ.; L-I, 44 dB typ.
- wideband, 50 to 1000 MHz
- rugged welded construction

Applications

- VHF/UHF
- cellular
- ISM/GSM

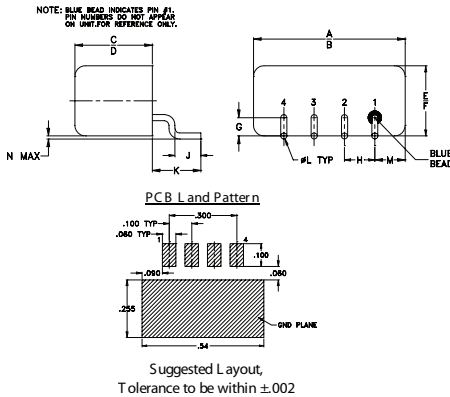
Electrical Specifications

FREQUENCY (MHz)	CONVERSION LOSS (dB)	LO-RF ISOLATION (dB)			LO-IF ISOLATION (dB)			IP3 @ CENTER BAND (dBm)										
		L	M	U	L	M	U											
50-1000	DC-1000	5.85	0.07	7.5	9.0	58	40	47	30	42	25	50	35	44	20	29	18	16

1 dB COMP: +1 dBm typ.

L = 50-100 MHz M = 100-500 MHz U = upper range [$f_u/2$ to f_u]
m = mid band [$2f_l$ to $f_u/2$]

Outline Drawing

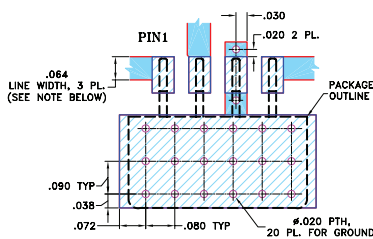


Outline Dimensions (inch/mm)

A	B	C	D	E	F	G
.50	.48	.255	.240	.23	.21	.06
12.70	12.19	6.48	6.10	5.84	5.33	1.52

H	J	K	L	M	N	wt
.100	.09	.16	.020	.09	.005	grams
2.54	2.29	4.06	0.51	2.29	0.13	1.9

Demo Board MCL PIN: TB-201 Suggested PCB Layout (PL-081)

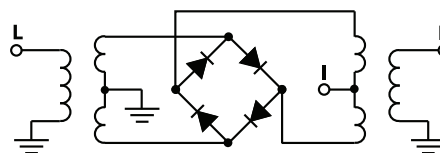


- NOTES: 1. TRACE WIDTH IS SHOWN FOR ROGERS RO4350B WITH DIELECTRIC THICKNESS 0.030" ± 0.002"; COPPER: 1/2 OZ. EACH SIDE. FOR OTHER MATERIALS TRACE WIDTH MAY NEED TO BE MODIFIED.
2. BOTTOM SIDE OF THE PCB IS CONTINUOUS GROUND PLANE.
3. DENOTES PCB COPPER LAYOUT WITH SMOBC (SOLDER MASK OVER BARE COPPER)
4. DENOTES COPPER LAND PATTERN FREE OF SOLDER MASK

Typical Performance Data

Frequency (MHz)	Conversion Loss (dB)	Isolation L-R (dB)	Isolation L-I (dB)	VSWR RF Port (:1)	VSWR LO Port (:1)
50.00	80.00	6.03	61.24	1.08	2.52
100.00	70.00	6.12	55.20	1.10	2.47
129.17	99.17	6.03	53.19	1.12	2.42
200.00	170.00	5.94	49.63	1.17	2.35
208.33	178.33	5.97	49.40	1.22	2.31
287.50	257.50	5.98	46.76	1.27	2.32
340.28	310.28	5.94	45.51	1.33	2.34
366.67	336.67	5.91	45.07	1.36	2.32
445.83	415.83	5.88	43.51	1.43	2.32
498.61	468.61	5.96	42.80	1.47	2.34
500.00	470.00	5.98	42.81	1.50	2.33
551.39	521.39	6.04	42.43	1.58	2.37
630.56	600.56	6.27	41.96	1.68	2.38
683.33	653.33	6.36	41.15	1.76	2.35
709.72	679.72	6.45	40.66	1.79	2.33
788.89	758.89	6.59	39.89	1.94	2.34
868.06	838.06	6.81	39.69	2.11	2.38
947.22	917.22	7.04	39.66	2.31	2.42
973.61	943.61	7.23	39.91	2.37	2.42
1000.00	970.00	7.37	39.73	2.44	2.41

Electrical Schematic



For detailed performance specs & shopping online see web site

P.O. Box 350166, Brooklyn, New York 11235-0003 (718) 934-4500 Fax (718) 332-4661 The Design Engineers Search Engine Provides ACTUAL Data Instantly at minicircuits.com

IF/RF MICROWAVE COMPONENTS

Notes: 1. Performance and quality attributes and conditions not expressly stated in this specification sheet are intended to be excluded and do not form a part of this specification sheet. 2. Electrical specifications and performance data contained herein are based on Mini-Circuit's applicable established test performance criteria and measurement instructions. 3. The parts covered by this specification sheet are subject to Mini-Circuits standard limited warranty and terms and conditions (collectively, "Standard Terms"); Purchasers of this part are entitled to the rights and benefits contained therein. For a full statement of the Standard Terms and the exclusive rights and remedies thereunder, please visit Mini-Circuits' website at www.minicircuits.com/MCLStore/terms.jsp.

