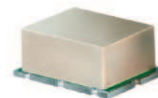


Surface Mount Frequency Mixer

SYM-2500+ SYM-2500

Level 7 (LO Power +7 dBm) 1 to 2500 MHz



Maximum Ratings

Operating Temperature	-40°C to 85°C
Storage Temperature	-55°C to 100°C
RF Power	200mW
IF Current	40mA

Permanent damage may occur if any of these limits are exceeded.

Pin Connections

LO	2
RF	1
IF	3
GROUND	4,5,6

Features

- wideband, 1 to 2500 MHz.
- low conversion loss, 6.5 dB typ.
- high L-R isolation, 50 dB typ.

Applications

- ISM/GPS
- PCS
- cellular
- satellite distribution

CASE STYLE: TTT167
PRICE: \$11.95 ea. QTY (1-9)

**+ RoHS compliant in accordance
with EU Directive (2002/95/EC)**

The +Suffix identifies RoHS Compliance. See our web site
for RoHS Compliance methodologies and qualifications.

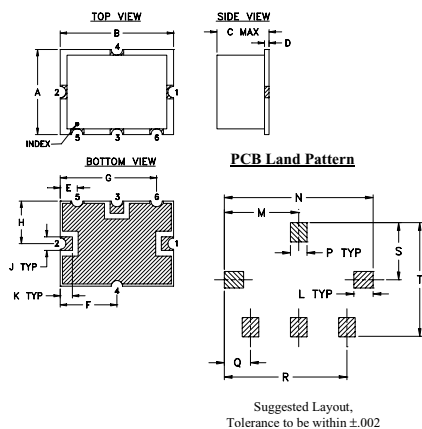
Electrical Specifications

FREQUENCY (MHz)	CONVERSION LOSS (dB)	LO-RF ISOLATION (dB)			LO-IF ISOLATION (dB)			IP3 at center band (dBm)										
		L	M	U	L	M	U											
1-2500	DC-500	6.5	.10	8.5	9.8	70	50	50	25	36	20	60	45	30	10	16	8	12

1 dB COMP.: +1 dBm typ.

L = low range [f_l to $10 f_l$]
M = mid band [$2 f_l$ to $f_l/2$]
U = upper range [$f_l/2$ to f_u]

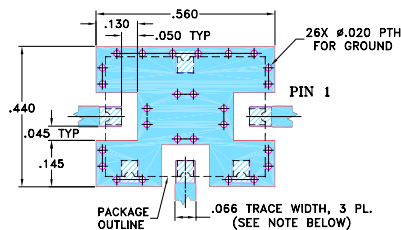
Outline Drawing



Outline Dimensions (inch/mm)

A	B	C	D	E	F	G	H	J	K
.38	.50	.23	.020	.075	.250	.425	.187	.050	.050
9.65	12.70	5.84	0.51	1.91	6.35	10.80	4.75	1.27	1.27
L	M	N	P	Q	R	S	T	wt.	
.070	.270	.540	.060	.095	.445	.208	.415	grams	
1.78	6.86	13.72	1.52	2.41	11.30	5.28	10.54	0.8	

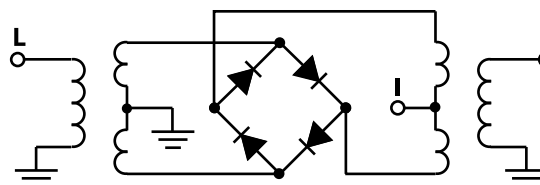
Demo Board MCL P/N: TB-12 Suggested PCB Layout (PL-079)



Typical Performance Data

Frequency (MHz)		Conversion Loss (dB)	Isolation L-R (dB)	Isolation L-I (dB)	VSWR RF Port (:1)	VSWR LO Port (:1)
RF	LO	LO +7dBm	LO +7dBm	LO +7dBm	LO +7dBm	LO +7dBm
1.01	31.01	5.40	68.55	78.07	1.24	2.88
2.01	32.01	5.24	68.93	76.05	1.18	2.74
5.84	35.84	5.13	70.25	70.86	1.17	2.63
9.42	39.42	5.12	70.04	68.23	1.17	2.50
20.90	50.90	5.12	68.86	62.17	1.17	2.52
54.42	84.42	5.17	67.37	57.12	1.20	2.44
102.99	72.99	5.17	63.40	53.83	1.22	2.41
194.90	164.90	5.28	58.63	46.88	1.33	2.33
507.42	477.42	5.59	56.42	36.76	1.69	1.97
960.27	930.27	6.94	43.41	19.21	2.59	1.30
1126.30	1096.30	7.08	37.71	17.79	3.14	1.12
1250.00	1220.00	7.57	35.73	18.03	3.60	1.10
1400.00	1370.00	7.99	35.56	18.61	3.63	1.27
1549.41	1519.41	8.23	34.63	17.85	2.87	1.45
1600.00	1570.00	8.20	34.82	17.62	2.69	1.52
1800.00	1770.00	8.17	34.21	16.19	2.25	1.77
2000.00	1970.00	7.97	34.66	16.53	1.93	1.96
2200.00	2170.00	7.83	38.26	17.68	1.46	2.01
2400.00	2370.00	7.93	40.77	17.10	1.10	1.86
2500.00	2470.00	8.18	43.10	16.95	1.83	1.71

Electrical Schematic



Mini-Circuits
ISO 9001 ISO 14001 AS 9100 CERTIFIED

For detailed performance specs
& shopping online see web site

P.O. Box 350166, Brooklyn, New York 11235-0003 (718) 934-4500 Fax (718) 332-4661 The Design Engineers Search Engine Provides ACTUAL Data Instantly at minicircuits.com

IF/RF MICROWAVE COMPONENTS

Notes: 1. Performance and quality attributes and conditions not expressly stated in this specification sheet are intended to be excluded and do not form a part of this specification sheet. 2. Electrical specifications and performance data contained herein are based on Mini-Circuit's applicable established test performance criteria and measurement instructions. 3. The parts covered by this specification sheet are subject to Mini-Circuit's standard limited warranty and terms and conditions (collectively, "Standard Terms"); Purchasers of this part are entitled to the rights and benefits contained therein. For a full statement of the Standard Terms and the exclusive rights and remedies thereunder, please visit Mini-Circuit's website at www.minicircuits.com/MCLStore/terms.jsp.

REV. B
M112207
SYM-2500
DJ/TD/AM
091006
Page 1 of 2

Performance Charts

