

Surface Mount Frequency Mixer

Level 7 (LO Power +7dBm) 200 to 3000 MHz

LRMS-30J+ LRMS-30J



CASE STYLE: QQQ569
PRICE: \$9.25 ea. QTY (1-9)

**+ RoHS compliant in accordance
with EU Directive (2002/95/EC)**

The +Suffix identifies RoHS Compliance. See our web site
for RoHS Compliance methodologies and qualifications.

Maximum Ratings

Operating Temperature	-40°C to 85°C
Storage Temperature	-55°C to 100°C
RF Power	50mW
IF Current	40mA
Permanent damage may occur if any of these limits are exceeded.	

Pin Connections

LO	1
RF	4
IF	5
GROUND	2,3,6

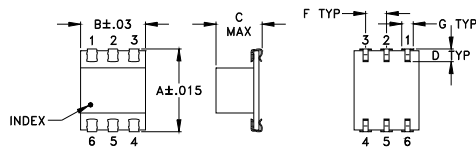
Features

- wide bandwidth, 200 to 3000 MHz
- low conversion loss, 5.92 dB typ.
- aqueous washable
- J-leads for strain relief

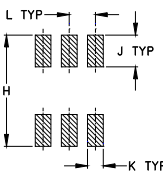
Applications

- cellular
- PCS
- GPS
- ISM
- cellular

Outline Drawing



PCB Land Pattern

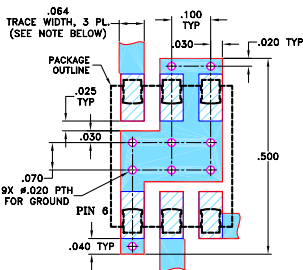


Suggested Layout,
Tolerance to be within ±.002

Outline Dimensions (inch/mm)

A	B	C	D	E	F	G
.390	.31	.225	.060	--	.100	.045
9.91	7.87	5.72	1.52	--	2.54	1.14
H	J	K	L	M	wt	
.420	.120	.060	.100	--	grams	
10.67	3.05	1.52	2.54	--	0.50	

Demo Board MCL P/N: TB-44+
Suggested PCB Layout (PL-083)



- NOTES: 1. TRACE WIDTH IS SHOWN FOR ROGERS RO4350B WITH DIELECTRIC THICKNESS 0.030" ± 0.002"; COPPER: 1/2 OZ. EACH SIDE. FOR OTHER MATERIALS TRACE WIDTH MAY NEED TO BE MODIFIED.
2. BOTTOM SIDE OF THE PCB IS CONTINUOUS GROUND PLANE.
3. DENOTES PCB COPPER LAYOUT WITH SMOBC (SOLDER MASK OVER BARE COPPER)
4. DENOTES COPPER LAND PATTERN FREE OF SOLDER MASK

Electrical Specifications

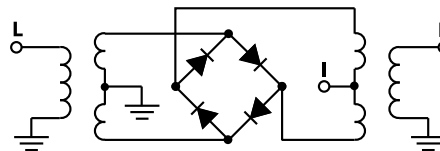
FREQUENCY (MHz)	CONVERSION LOSS (dB)	LO-RF ISOLATION (dB)		LO-IF ISOLATION (dB)		IP3 at center band (dBm)				
		Typ.	Min.	Typ.	Min.					
200-3000	DC-1000	6.8	.30	9.0	9.8	30	17	27	7	14

1 dB COMP: +1 dBm typ.
m= mid band [2f_L to f_U/2]

Typical Performance Data

Frequency (MHz)	Conversion Loss (dB)	Isolation L-R (dB)	Isolation L-I (dB)	VSWR RF Port (:1)	VSWR LO Port (:1)
200.00	230.00	5.80	33.50	6.26	2.14
375.00	405.00	5.01	40.50	3.64	1.11
500.00	530.00	5.01	29.00	3.01	1.10
550.00	580.00	4.88	29.16	2.76	1.13
725.00	755.00	5.33	29.00	2.25	2.46
900.00	930.00	6.56	28.17	1.59	3.79
1000.00	1030.00	5.94	28.84	1.42	4.12
1075.00	1105.00	5.61	31.50	1.40	4.12
1250.00	1280.00	5.97	40.83	1.74	3.44
1425.00	1455.00	6.85	31.50	2.10	4.03
1600.00	1630.00	7.56	23.84	2.46	4.89
1775.00	1805.00	7.49	20.66	2.88	5.03
1950.00	1980.00	7.68	19.16	3.44	4.53
2000.00	2030.00	7.74	19.00	3.50	4.32
2125.00	2155.00	7.71	18.67	3.64	4.03
2300.00	2330.00	7.58	31.66	3.44	3.21
2475.00	2505.00	6.90	25.50	3.38	2.30
2650.00	2680.00	6.32	24.34	2.88	1.75
2825.00	2855.00	6.68	24.83	2.84	2.14
3000.00	3030.00	7.55	27.00	4.53	3.11

Electrical Schematic



Mini-Circuits®
ISO 9001 ISO 14001 AS 9100 CERTIFIED
The Design Engineers Search Engine Provides ACTUAL Data Instantly at minicircuits.com
IF/RF MICROWAVE COMPONENTS

For detailed performance specs
& shopping online see web site

P.O. Box 350166, Brooklyn, New York 11235-0003 (718) 934-4500 Fax (718) 332-4661

Notes: 1. Performance and quality attributes and conditions not expressly stated in this specification sheet are intended to be excluded and do not form a part of this specification sheet. 2. Electrical specifications and performance data contained herein are based on Mini-Circuit's applicable established test performance criteria and measurement instructions. 3. The parts covered by this specification sheet are subject to Mini-Circuit's standard limited warranty and terms and conditions (collectively, "Standard Terms"); Purchasers of this part are entitled to the rights and benefits contained therein. For a full statement of the Standard Terms and the exclusive rights and remedies thereunder, please visit Mini-Circuit's website at www.minicircuits.com/MCLStore/terms.jsp.

REV. B
M102713
LRMS-30J
ED-3427
DJ/FL/CP/AM
070613
Page 1 of 2

Performance Charts

