

Surface Mount High Reliability Mixer

TUF-R1SM+

Level 7 (LO Power +7 dBm) 5 to 600 MHz



CASE STYLE: NNN150
PRICE: \$8.60 ea. QTY. (10)

+RoHS Compliant

The +Suffix identifies RoHS Compliance. See our web site for RoHS Compliance methodologies and qualifications

Maximum Ratings

Operating Temperature	-55°C to 100°C
Storage Temperature	-55°C to 100°C
RF Power	50mW
IF Current	40mA

Permanent damage may occur if any of these limits are exceeded.

Pin Connections

LO	4
RF	1
IF	2
GROUND	3
CASE GROUND	3

Features

- hermetically sealed ceramic quad
- low conversion loss, 5.9 dB typ.
- excellent isolation L-R, 50 dB typ; L-I, 48 dB typ.
- rugged welded construction
- shielded metal case

Applications

- VHF/UHF
- FM radio
- defense & federal communications

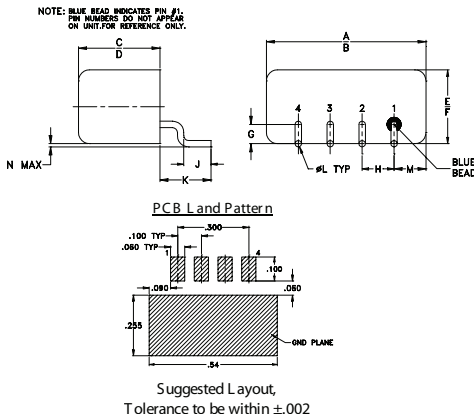
Electrical Specifications

FREQUENCY (MHz)	CONVERSION LOSS (dB)	LO-RF ISOLATION (dB)			LO-IF ISOLATION (dB)			IP3 at center band (dBm)						
		L	M	U	L	M	U							
5-600	DC-600	60	45	50	32	42	26	60	43	48	34	40	25	16

1 dB COMP.: +1 dBm typ.

L = low range [f_L to $10 f_L$] M = mid range [$10 f_L$ to $f_U/2$] U = upper range [$f_U/2$ to f_U]
m = mid band [$2f_L$ to $f_U/2$]

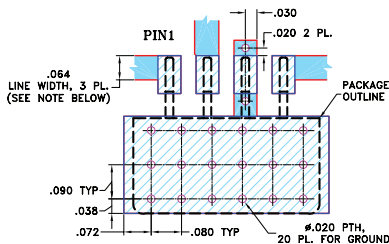
Outline Drawing



Outline Dimensions (inch/mm)

A	B	C	D	E	F	G
.50	.48	.255	.240	.23	.21	.06
12.70	12.19	6.48	6.10	5.84	5.33	1.52
H	J	K	L	M	N	wt
.100	.09	.16	.020	.09	.005	grams
2.54	2.29	4.06	0.51	2.29	0.13	1.9

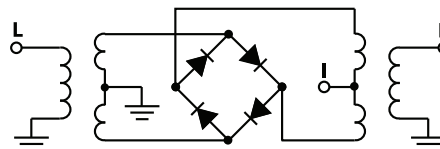
Demo Board MCL PIN: TB-201
Suggested PCB Layout (PL-081)



Typical Performance Data

Frequency (MHz)	Conversion Loss (dB)	Isolation L-R (dB)	Isolation L-I (dB)	VSWR RF Port (:1)	VSWR LO Port (:1)
4.00	34.00	6.06	66.56	1.36	2.64
6.00	36.00	5.95	66.02	1.25	2.58
10.00	40.00	5.89	65.37	1.17	2.70
32.00	62.00	5.92	61.99	1.11	2.65
40.50	70.50	5.94	61.46	1.11	2.72
49.00	79.00	5.93	60.24	1.11	2.56
66.00	96.00	5.94	58.07	1.11	2.47
74.50	104.50	5.95	58.24	1.11	2.64
83.00	113.00	5.95	57.74	1.11	2.65
91.50	121.50	5.95	57.54	1.11	2.59
100.00	130.00	5.95	56.70	1.11	2.68
160.00	190.00	5.95	53.29	1.13	2.61
220.00	250.00	5.96	51.73	1.15	2.79
250.00	280.00	5.95	50.55	1.15	2.55
310.00	340.00	5.96	49.80	1.17	2.74
340.00	370.00	5.93	49.37	1.20	2.48
400.00	430.00	5.97	46.91	1.18	2.76
442.50	472.50	5.99	46.17	1.20	2.74
527.50	557.50	6.08	46.85	1.27	2.74
600.00	630.00	6.25	45.82	1.29	2.47

Electrical Schematic



Mini-Circuits
ISO 9001 ISO 14001 AS 9100 CERTIFIED

For detailed performance specs & shopping online see web site

P.O. Box 350166, Brooklyn, New York 11235-0003 (718) 934-4500 Fax (718) 332-4661 The Design Engineers Search Engine Provides ACTUAL Data Instantly at minicircuits.com

IF/RF MICROWAVE COMPONENTS

Notes: 1. Performance and quality attributes and conditions not expressly stated in this specification sheet are intended to be excluded and do not form a part of this specification sheet. 2. Electrical specifications and performance data contained herein are based on Mini-Circuits' applicable established test performance criteria and measurement instructions. 3. The parts covered by this specification sheet are subject to Mini-Circuits standard limited warranty and terms and conditions (collectively, "Standard Terms"); Purchasers of this part are entitled to the rights and benefits contained therein. For a full statement of the Standard Terms and the exclusive rights and remedies thereunder, please visit Mini-Circuits' website at www.minicircuits.com/MCLStore/terms.jsp.

REV. OR
M109914
TUF-R1SM+
ED-12916/1
WL/TD/AM
130502
Page 1 of 2

