

# Plug-In High Pass Filter

## PHP-25+

50Ω 27.5 to 200 MHz

### Maximum Ratings

Operating Temperature	-55°C to 100°C
Storage Temperature	-55°C to 100°C
RF Power Input	0.5W max.

Permanent damage may occur if any of these limits are exceeded.

### Pin Connections

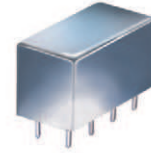
INPUT	1
OUTPUT	8
GROUND	2,3,4,5,6,7
CASE GROUND	2,3,4,5,6,7

### Features

- rugged shielded case, hermetically sealed
- other standard and custom PHP models available with wide selection of fco

### Applications

- lab use
- transmitters/receivers
- military/hi-rel application



CASE STYLE: A01  
PRICE: \$19.20 ea. QTY: (1-9)

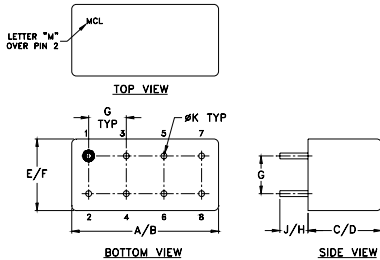
**+ RoHS compliant in accordance with EU Directive (2002/95/EC)**

The +Suffix has been added in order to identify RoHS Compliance. See our web site for RoHS Compliance methodologies and qualifications.

### High Pass Filter Electrical Specifications

STOPBAND (MHz)	fco (MHz) Nom.	PASSBAND (MHz)	VSWR (:1)
(loss > 40 dB)	(loss > 20 dB)	(loss < 3 dB)	Stopband Typ. Passband Typ.
DC-13	13-19	25	18 1.7

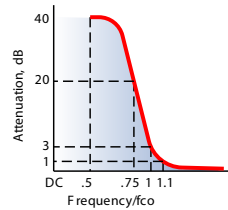
### Outline Drawing



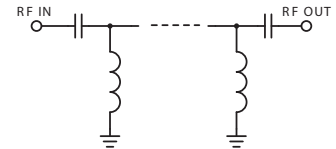
### Outline Dimensions (inch/mm)

A	B	C	D	E	F
.770	.800	.385	.400	.370	.400
19.56	20.32	9.78	10.16	9.40	10.16
G	H	J	K	wt	
.200	.20	.14	.031	grams	
5.08	5.08	3.56	0.79	5.2	

### typical frequency response

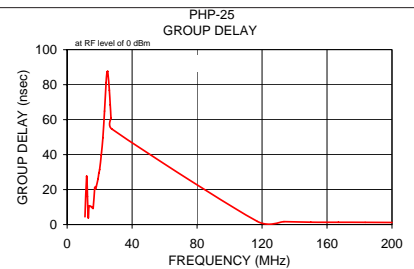
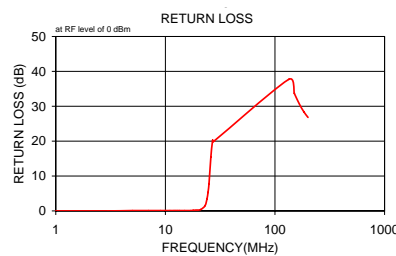


### electrical schematic



### Typical Performance Data

Frequency (MHz)	Insertion Loss (dB)	Return Loss (dB)	Frequency (MHz)	Group Delay (nsec)
	$\bar{x}$	$\sigma$		
1.00	43.12	0.1	11.00	4.43
3.00	43.76	0.6	12.00	27.53
5.00	44.40	0.7	12.50	15.99
7.00	44.36	0.9	13.00	3.88
9.00	45.32	1.0	13.50	10.69
10.00	45.99	0.9	14.00	10.46
11.00	46.57	0.9	15.00	10.21
12.00	49.64	1.1	16.00	9.29
12.50	51.45	1.2	17.00	21.16
13.00	53.51	1.5	17.50	20.41
13.50	58.61	2.1	18.00	21.90
15.00	51.13	1.7	19.00	26.00
17.00	36.08	1.3	19.50	29.47
17.50	33.22	1.1	20.00	31.47
18.00	30.58	1.2	21.00	39.77
19.00	25.70	1.2	22.00	49.67
19.50	23.35	1.2	23.00	64.87
21.00	16.44	1.3	24.00	81.19
23.00	7.62	1.3	24.50	87.11
24.00	4.02	1.0	25.00	87.60
24.50	2.71	0.8	26.00	76.81
25.00	1.76	0.6	26.50	68.46
26.00	0.80	0.2	27.00	60.97
27.00	0.55	0.1	27.50	54.67
27.50	0.52	0.1	117.00	1.85
133.50	0.17	0.1	133.50	1.65
150.00	0.18	0.1	150.00	1.36
167.00	0.20	0.1	167.00	1.29
183.50	0.19	0.1	183.50	1.25
200.00	0.20	0.1	200.00	1.16



P.O. Box 350166, Brooklyn, New York 11235-0003 (718) 934-4500 Fax (718) 332-4661 The Design Engineers Search Engine Provides ACTUAL Data Instantly at [minicircuits.com](http://minicircuits.com)

IF/RF MICROWAVE COMPONENTS

For detailed performance specs & shopping online see web site

Notes: 1. Performance and quality attributes and conditions not expressly stated in this specification sheet are intended to be excluded and do not form a part of this specification sheet. 2. Electrical specifications and performance data contained herein are based on Mini-Circuit's applicable established test performance criteria and measurement instructions. 3. The parts covered by this specification sheet are subject to Mini-Circuits standard limited warranty and terms and conditions (collectively, "Standard Terms"); Purchasers of this part are entitled to the rights and benefits contained therein. For a full statement of the Standard Terms and the exclusive rights and remedies thereunder, please visit Mini-Circuits' website at [www.minicircuits.com/MCLStore/terms.jsp](http://www.minicircuits.com/MCLStore/terms.jsp).

REV. B  
M113397  
PHP-25+  
100909