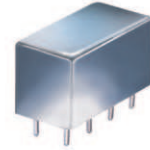


Plug-In

Bandpass Filter

PBP-30+

50Ω Elliptic Response 27 to 33 MHz



Maximum Ratings

Operating Temperature	-55°C to 100°C
Storage Temperature	-55°C to 100°C
RF Power Input	0.5W max.

Permanent damage may occur if any of these limits are exceeded.

Pin Connections

INPUT	1
OUTPUT	8
GROUND	2,3,4,5,6,7
CASE GROUND	2,3,4,5,6,7

Features

- low insertion loss, 1.5 dB max.
- good selectivity, 1.76 typ. 20 dB/3 dB BW ratio
- rugged shielded case, hermetically sealed

Applications

- military hi-rel systems
- high rejection applications
- image rejection
- IF signal processing

CASE STYLE: A01

PRICE: \$21.20 ea. QTY: 1-9

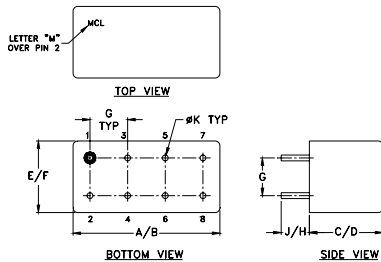
+ RoHS compliant in accordance with EU Directive (2002/95/EC)

The +Suffix has been added in order to identify RoHS Compliance. See our web site for RoHS Compliance methodologies and qualifications.

Bandpass Filter Electrical Specifications

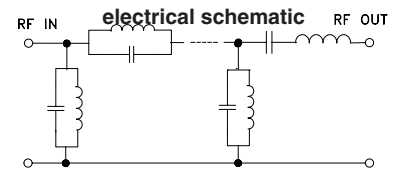
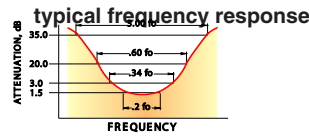
CENTER FREQ. (MHz)	PASSBAND (MHz)	3dB BANDWIDTH (MHz)	STOPBANDS		VSWR (:1)	
			(I. loss > 20 dB) at MHz	(I. loss > 35 dB) at MHz	Passband Max.	Stopband Typ.
30	27-33	25-35	22 & 40	3.2 & 99-1000	1.7	16

Outline Drawing



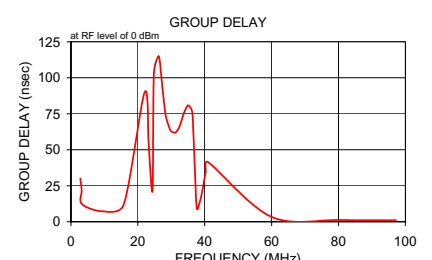
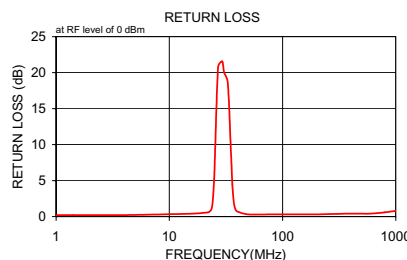
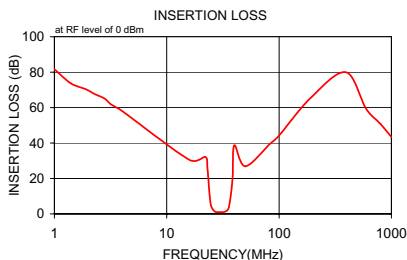
Outline Dimensions (inch/mm)

A	B	C	D	E	F
.770	.800	.385	.400	.370	.400
19.56	20.32	9.78	10.16	9.40	10.16
G	H	J	K	wt	
.200	.20	.14	.031	grams	
5.08	5.08	3.56	0.79	5.2	



Typical Performance Data

Frequency (MHz)	Insertion Loss (dB)		Return Loss (dB)	Frequency (MHz)	Group Delay (nsec)
	\bar{x}	σ			
1.0	81.68	9.6	0.2	2.8	30.059
1.4	73.69	2.1	0.2	3.2	21.884
1.9	70.39	1.8	0.2	3.3	12.226
2.3	67.50	1.2	0.2	9.6	7.216
2.8	65.09	0.9	0.2	15.8	11.923
3.2	61.70	1.3	0.2	22.0	89.768
4.0	58.09	0.6	0.2	23.2	56.479
16.0	30.42	0.6	0.4	23.6	40.798
22.0	32.26	2.3	0.6	24.4	22.806
23.0	26.30	1.7	0.8	24.8	103.619
23.7	15.68	1.1	1.2	26.2	115.164
24.3	8.44	1.0	2.5	27.1	99.025
25.0	3.86	0.6	6.3	28.0	78.962
27.0	1.28	0.1	20.8	28.5	72.223
29.3	1.02	0.1	21.6	29.5	64.660
30.5	1.02	0.1	20.0	30.0	62.760
32.8	1.16	0.1	18.6	31.1	61.836
35.0	2.37	0.3	8.8	31.6	62.724
36.0	4.69	0.5	4.5	32.2	64.652
37.3	11.24	0.9	1.7	32.7	67.765
38.7	21.64	1.2	0.9	33.9	76.095
40.0	38.75	2.0	0.7	35.1	80.917
50.0	26.83	0.5	0.3	36.3	75.838
82.7	39.42	0.4	0.3	37.6	9.558
99.0	43.92	0.6	0.3	38.9	16.978
190.0	65.36	2.3	0.3	40.3	34.601
392.5	80.00	3.9	0.4	41.0	41.413
595.0	59.40	2.2	0.4	59.9	3.448
797.5	50.83	1.8	0.6	80.4	1.230
1000.0	43.35	2.3	0.8	97.2	0.971



P.O. Box 350166, Brooklyn, New York 11235-0003 (718) 934-4500 Fax (718) 332-4661 The Design Engineers Search Engine Provides ACTUAL Data Instantly at minicircuits.com

Notes: 1. Performance and quality attributes and conditions not expressly stated in this specification sheet are intended to be excluded and do not form a part of this specification sheet. 2. Electrical specifications and performance data contained herein are based on Mini-Circuits' applicable established test performance criteria and measurement instructions. 3. The parts covered by this specification sheet are subject to Mini-Circuits standard limited warranty and terms and conditions (collectively, "Standard Terms"); Purchasers of this part are entitled to the rights and benefits contained therein. For a full statement of the Standard Terms and the exclusive rights and remedies thereunder, please visit Mini-Circuits' website at www.minicircuits.com/MCLStore/terms.jsp.

For detailed performance specs & shopping online see web site

REV. A
M108294
PBP-30+
090820