

Coaxial High Pass Filter

ZX75HP-395+

50Ω 650 to 2750 MHz

The Big Deal

- Low insertion loss
- High rejection
- Connectorized package



CASE STYLE: KE1467

Product Overview

ZX75HP-395+ is a High pass filter in a rugged connectorized package covering 650 to 2750 MHz. This filter will find its application in TV Broadcast, point-to-point military radio and cordless telephones. It has repeatable performance across production lots and consistent performance across temperature.

Key Features

Feature	Advantages
Low insertion loss	Can be used in high performance applications.
Good rejection	This enables the filter to attenuate spurious signals and reject harmonics for broad band frequency.
Connectorized package	The connectorized package is easy to interface with other devices and well suited for test setups.



For detailed performance specs
& shopping online see web site

P.O. Box 350166, Brooklyn, New York 11235-0003 (718) 934-4500 Fax (718) 332-4661 The Design Engineers Search Engine  Provides ACTUAL Data Instantly at minicircuits.com

Notes: 1. Performance and quality attributes and conditions not expressly stated in this specification sheet are intended to be excluded and do not form a part of this specification sheet. 2. Electrical specifications and performance data contained herein are based on Mini-Circuit's applicable established test performance criteria and measurement instructions. 3. The parts covered by this specification sheet are subject to Mini-Circuits standard limited warranty and terms and conditions (collectively, "Standard Terms"); Purchasers of this part are entitled to the rights and benefits contained therein. For a full statement of the Standard Terms and the exclusive rights and remedies thereunder, please visit Mini-Circuits' website at www.minicircuits.com/MCLStore/terms.jsp.

Coaxial High Pass Filter

ZX75HP-395+

50Ω 650 to 2750 MHz



CASE STYLE: KE1467

Features

- Wide band, 650 MHz to 2750 MHz
- High rejection
- Connectorized package

Connectors	Model	Price	Qty.
SMA-MF	ZX75HP-395-S+	\$54.95 ea.	(1-9)

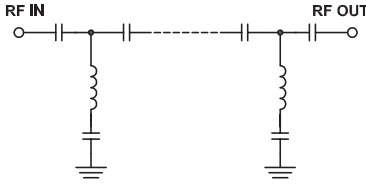
Electrical Specifications at 25°C

Parameter	F#	Frequency (MHz)	Min.	Typ.	Max.	Unit	
Stop Band	Rejection Loss	DC-F1	DC-280	20	31	-	dB
	VSWR	DC-F1	DC-280	-	67	-	:1
Pass Band	Insertion Loss	F2-F3	650-2750	-	0.5	1.5	dB
	VSWR	F2-F3	650-2750	-	1.4	-	:1

Applications

- TV Broadcast
- Point-to-point military radio
- Cordless telephones

Functional Schematic



Maximum Ratings

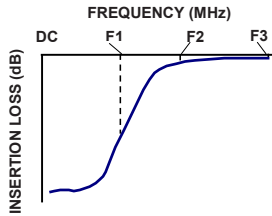
Operating Temperature	-40°C to 85°C
Storage Temperature	-55°C to 100°C
RF Power Input	0.5 W.

Permanent damage may occur if any of these limits are exceeded.

Typical Performance Data at 25°C

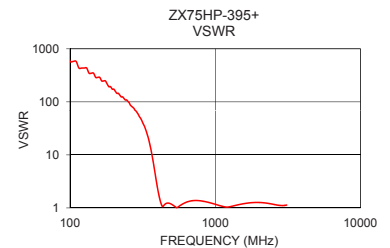
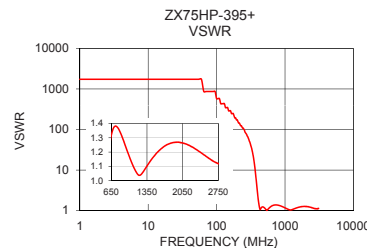
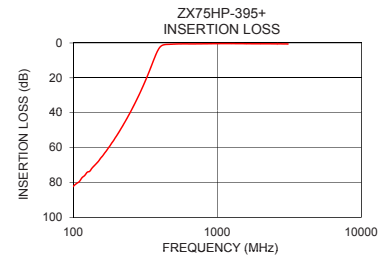
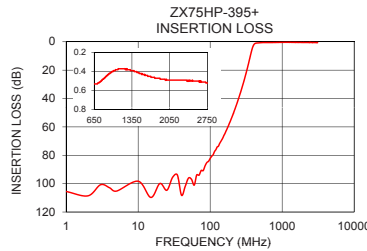
Frequency (MHz)	Insertion Loss (dB)	VSWR (:1)
1	105.49	1737.18
80	90.79	868.59
130	73.62	434.30
185	57.42	193.02
245	40.81	108.58
280	31.44	69.49
310	23.51	45.72
355	11.56	15.26
380	5.54	5.54
395	3.00	2.89
420	1.19	1.29
580	0.52	1.14
650	0.53	1.32
750	0.51	1.38
930	0.42	1.24
1000	0.40	1.17
1560	0.43	1.20
1790	0.47	1.26
2300	0.49	1.22
2750	0.52	1.12

Typical Frequency Response



+RoHS Compliant

The +Suffix identifies RoHS Compliance. See our web site for RoHS Compliance methodologies and qualifications



Mini-Circuits®
 ISO 9001 ISO 14001 AS 9100 CERTIFIED
 IFIRF MICROWAVE COMPONENTS

For detailed performance specs & shopping online see web site

P.O. Box 350166, Brooklyn, New York 11235-0003 (718) 934-4500 Fax (718) 332-4661 The Design Engineers Search Engine [minicircuits.com](http://www.minicircuits.com) Provides ACTUAL Data Instantly at minicircuits.com

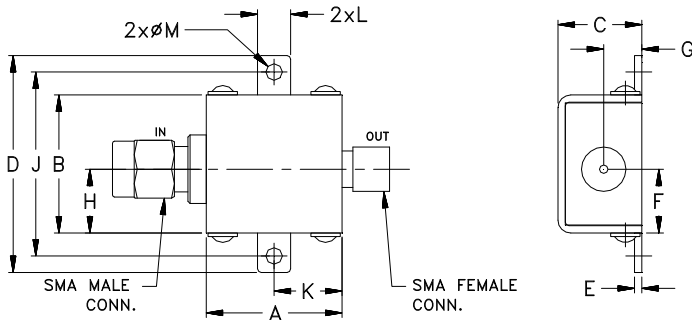
Notes: 1. Performance and quality attributes and conditions not expressly stated in this specification sheet are intended to be excluded and do not form a part of this specification sheet. 2. Electrical specifications and performance data contained herein are based on Mini-Circuit's applicable established test performance criteria and measurement instructions. 3. The parts covered by this specification sheet are subject to Mini-Circuits standard limited warranty and terms and conditions (collectively, "Standard Terms"); Purchasers of this part are entitled to the rights and benefits contained therein. For a full statement of the Standard Terms and the exclusive rights and remedies thereunder, please visit Mini-Circuits' website at www.minicircuits.com/MCLStore/terms.jsp.

REV OR
 M139512
 ZX75HP-395+
 EDU1699
 URJ
 130116
 Page 2 of 3

Coaxial Connections

INPUT	SMA-Male
OUTPUT	SMA-Female

Outline Drawing



Outline Dimensions ($\frac{\text{inch}}{\text{mm}}$)

A	B	C	D	E	F	G
0.74	.75	.46	1.18	.04	.349	.21
18.80	19.05	11.68	29.97	1.02	8.86	5.33
H	J	K	L	M	wt	
.349	1.00	.37	.18	.09	grams	
8.86	25.40	9.40	4.57	2.29	24.4	