

# High Pass Filter

## ZFHP-2100+

50Ω 2500 to 6800 MHz

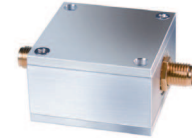
### Maximum Ratings

Operating Temperature	-40°C to 85°C
Storage Temperature	-55°C to 100°C
RF Power Input	0.5W at 25°C

Permanent damage may occur if any of these limits are exceeded.

### Features

- Wideband, 2500 to 6800 MHz
- Good VSWR, 1.3:1 Typ @ Passband
- High Rejection
- Rugged shielded case



CASE STYLE: H16

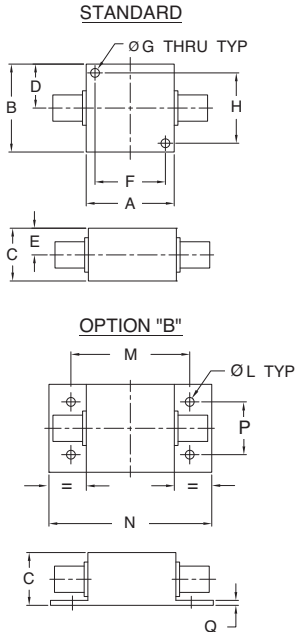
Connectors	Model	Price	Qty.
SMA-FEMALE BRACKET (OPTION "B")	ZFHP-2100-S+	\$29.95 ea. (1-9)	
		\$5.00 ea. (1+)	

### Applications

- Military communications
- Harmonic rejection
- Receivers / Transmitters
- Lab Use

**+RoHS Compliant**  
The +Suffix identifies RoHS Compliance. See our web site for RoHS Compliance methodologies and qualifications

### Outline Drawing



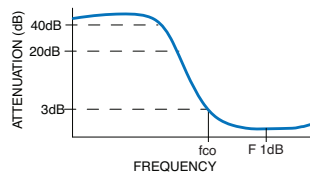
### Outline Dimensions (inch/mm)

A	B	C	D	E	F	G	H	L	M	N	P	Q	wt.
1.25	1.25	.75	.63	.38	1.000	.125	1.000	.125	1.688	2.18	.75	.06	grams
31.75	31.75	19.05	16.00	9.65	25.40	3.18	25.40	3.18	42.88	55.37	19.05	1.52	70

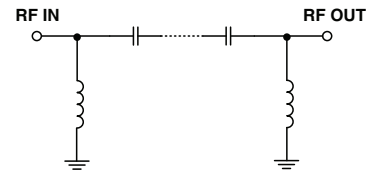
### High Pass Filter Electrical Specifications (T<sub>AMB</sub> = 25°C)

STOPBAND (MHz)		f <sub>co</sub> , MHz Nom.	PASSBAND (MHz)	VSWR (:1)	
(Loss > 40dB)	(Loss > 20dB)	(Loss 3dB)	(Loss < 1dB)	Stopband Typ.	Passband Typ.
DC - 900	DC - 1925	2100	2500 - 6800	20	1.3

### Typical Frequency Response

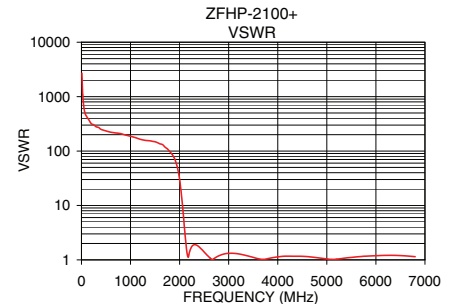
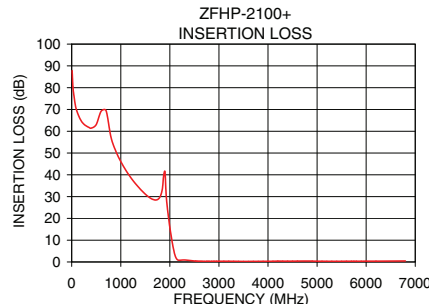


### Functional Schematic



### Typical Performance Data at 25°C

Frequency (MHz)	Insertion Loss (dB)	VSWR (:1)
10.0	87.84	2697.13
50.0	75.72	632.17
100.0	69.65	440.38
200.0	64.50	318.68
400.0	61.46	250.19
900.0	50.86	196.78
1100.0	42.20	176.49
1925.0	30.98	62.26
1950.0	24.73	51.93
2025.0	12.23	20.12
2075.0	5.89	6.87
2100.0	3.49	3.78
2125.0	1.90	2.16
2300.0	0.90	1.91
2500.0	0.46	1.40
3000.0	0.34	1.32
4000.0	0.32	1.13
5000.0	0.35	1.04
6800.0	0.45	1.14



For detailed performance specs & shopping online see web site

P.O. Box 350166, Brooklyn, New York 11235-0003 (718) 934-4500 Fax (718) 332-4661 The Design Engineers Search Engine Provides ACTUAL Data Instantly at [minicircuits.com](http://minicircuits.com)

Notes: 1. Performance and quality attributes and conditions not expressly stated in this specification sheet are intended to be excluded and do not form a part of this specification sheet. 2. Electrical specifications and performance data contained herein are based on Mini-Circuit's applicable established test performance criteria and measurement instructions. 3. The parts covered by this specification sheet are subject to Mini-Circuits standard limited warranty and terms and conditions (collectively, "Standard Terms"); Purchasers of this part are entitled to the rights and benefits contained therein. For a full statement of the Standard Terms and the exclusive rights and remedies thereunder, please visit Mini-Circuits' website at [www.minicircuits.com/MCLStore/terms.jsp](http://www.minicircuits.com/MCLStore/terms.jsp).