

Coaxial High Pass Filter

VHF-1760+ VHF-1760

50Ω 1900 to 5500 MHz

Maximum Ratings

| | |
|-----------------------|-----------------|
| Operating Temperature | -55°C to 100°C |
| Storage Temperature | -55°C to 100°C |
| RF Power Input* | 7W max. at 25°C |

* Passband rating, derate linearly to 3W at 100°C ambient. Permanent damage may occur if any of these limits are exceeded.

Features

- rugged unibody construction, small size
- 7 sections
- temperature stable
- excellent power handling, 7W
- low cost

Applications

- sub-harmonic rejection
- transmitters/receivers
- lab use



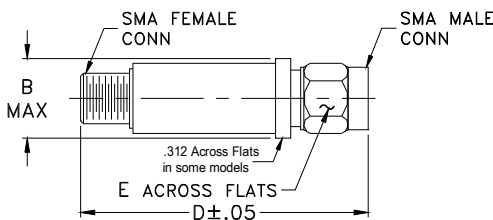
CASE STYLE: FF704

| Connectors | Model | Price | Qty. |
|------------|-------------|-------------|-------|
| SMA | VHF-1760(+) | \$24.95 ea. | (1-9) |

+ RoHS compliant in accordance with EU Directive (2002/95/EC)

The +Suffix identifies RoHS Compliance. See our web site for RoHS Compliance methodologies and qualifications.

Outline Drawing



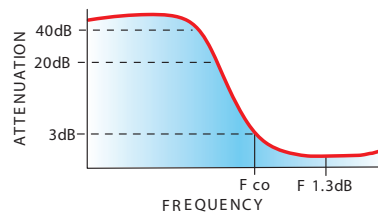
Outline Dimensions (inch/mm)

| B | D | E | wt |
|-------|-------|------|-------|
| .410 | 1.43 | .312 | grams |
| 10.41 | 36.32 | 7.92 | 10.0 |

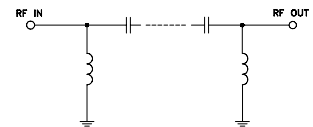
Electrical Specifications (T_{AMB} = 25°C)

| STOP BAND (MHz) | | f _{co} , MHz | PASSBAND (MHz) | | VSWR (:1) | NO. OF SECTIONS |
|-----------------|----------------|-----------------------|----------------------|--------------------|-----------------------|-----------------|
| Min. | Typ. | Nom. | Max. | Typ. | Typ. | |
| (loss > 40 dB) | (loss > 20 dB) | (loss 3 dB) Typ. | (loss < 1.3 dB) Max. | (loss < 2 dB) Typ. | Stopband | 7 |
| 950 | 1230 | 1760 | 2100-5200 | 1900-5500 | Frequency (MHz) 1.5:1 | |

typical frequency response

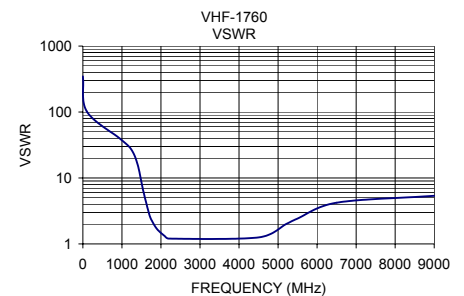
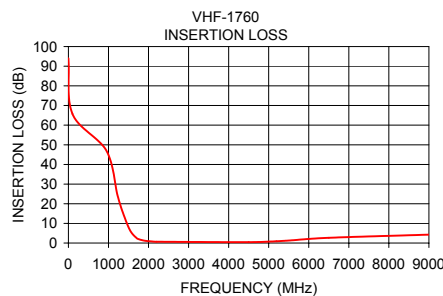


electrical schematic



Typical Performance Data

| Frequency (MHz) | Insertion Loss (dB) | VSWR (:1) |
|-----------------|---------------------|-----------|
| 1 | 94.01 | 347.44 |
| 100 | 65.74 | 102.19 |
| 950 | 46.94 | 39.49 |
| 1230 | 24.02 | 27.59 |
| 1400 | 13.23 | 16.11 |
| 1550 | 6.08 | 6.30 |
| 1700 | 2.57 | 2.82 |
| 1760 | 1.91 | 2.29 |
| 1900 | 1.17 | 1.68 |
| 2100 | 0.77 | 1.31 |
| 2200 | 0.65 | 1.20 |
| 4500 | 0.45 | 1.26 |
| 5200 | 0.92 | 1.99 |
| 5500 | 1.29 | 2.42 |
| 6500 | 2.66 | 4.22 |
| 9000 | 4.25 | 5.36 |



Mini-Circuits®
ISO 9001 ISO 14001 AS 9100 CERTIFIED

P.O. Box 350166, Brooklyn, New York 11235-0003 (718) 934-4500 Fax (718) 332-4661 The Design Engineers Search Engine Provides ACTUAL Data Instantly at minicircuits.com

Notes: 1. Performance and quality attributes and conditions not expressly stated in this specification sheet are intended to be excluded and do not form a part of this specification sheet. 2. Electrical specifications and performance data contained herein are based on Mini-Circuit's applicable established test performance criteria and measurement instructions. 3. The parts covered by this specification sheet are subject to Mini-Circuits standard limited warranty and terms and conditions (collectively, "Standard Terms"); Purchasers of this part are entitled to the rights and benefits contained therein. For a full statement of the Standard Terms and the exclusive rights and remedies thereunder, please visit Mini-Circuits' website at www.minicircuits.com/MCLStore/terms.jsp.

REV. E
M129173
VHF-1760
EDR-6711
RVN/AD/AM
101029