

# Low Pass Filter

50Ω DC to 1125 MHz (40 dB Isolation up to 20 GHz)

## Maximum Ratings

Operating Temperature -55°C to 100°C

Storage Temperature -55°C to 100°C

RF Power Input\* 10W max. at 25°C

\*Passband rating, derate linearly to 3.5W at 100°C ambient.  
Permanent damage may occur if any of these limits are exceeded.

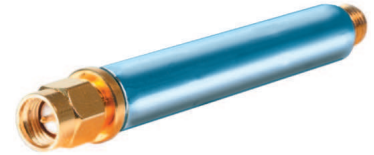
## Features

- very good isolation, 40 dB up to 20 GHz
- 21 sections
- excellent power handling, 10W
- temperature stable LTCC internal structure
- re-entry frequency > 20 GHz
- rugged unibody construction
- protected by US patent 6,943,646

## Applications

- harmonic rejection
- transmitters/receivers
- lab use
- test instrumentation

# VLFX-1125



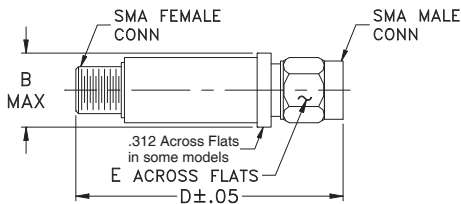
CASE STYLE: FF1118

Connectors	Model	Price	Qty.
SMA	VLFX-1125	\$39.95 ea.	(1-9)

**+RoHS Compliant**

The +Suffix identifies RoHS Compliance. See our web site for RoHS Compliance methodologies and qualifications

## Outline Drawing



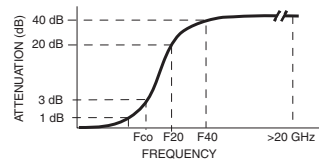
## Outline Dimensions (inch mm)

B	D	E	wt.
.410	2.67	.312	grams
10.41	67.82	7.92	17.0

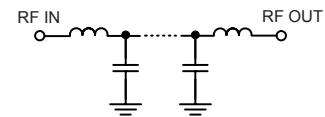
## Low Pass Filter Electrical Specifications @ 25°C

MODEL NO.	PASSBAND (MHz) (Loss < 1.2dB Max.)	Fco, MHz Nom (Loss 3 dB Typ)	STOPBAND (MHz) (Loss, dB)		VSWR (:1)		NO. OF SECTIONS
			F20 Min.	F40 Typ.	Stopband Typ.	Passband Typ.	
VLFX-1125	DC-1125	1825	2125	2300-20000	10	1.4	21

## Typical Frequency Response

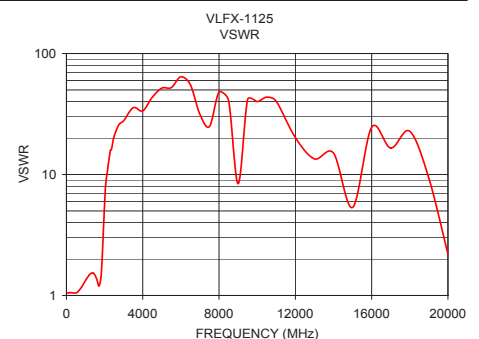
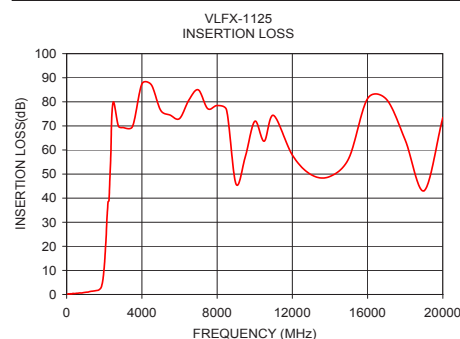


## Functional Schematic



## Typical Performance Data @ 25°C

Frequency (MHz)	Insertion Loss (dB)	VSWR (:1)
50	0.20	1.05
250	0.29	1.06
500	0.47	1.05
1000	0.98	1.33
1125	1.00	1.42
1250	1.22	1.50
1500	1.51	1.47
1825	2.87	1.57
1950	7.42	3.84
2125	28.25	10.09
2300	48.17	15.86
4000	87.43	33.59
6000	73.04	64.26
8000	78.45	48.12
10000	71.93	40.02
12000	57.91	20.21
14000	49.00	15.03
16000	81.35	24.55
18000	64.13	22.79
20000	73.49	2.20



**Mini-Circuits®**  
ISO 9001 ISO 14001 AS 9100 CERTIFIED  
P.O. Box 350166, Brooklyn, New York 11235-0003 (718) 934-4500 Fax (718) 332-4661 The Design Engineers Search Engine Provides ACTUAL Data Instantly at [minicircuits.com](http://minicircuits.com)  
IF/RF MICROWAVE COMPONENTS

For detailed performance specs & shopping online see web site

REV. B  
M131810  
VLFX-1125  
EDU-0399  
ED-11930A/17  
URJ/RS/CP  
130319  
Page 1 of 1

Notes: 1. Performance and quality attributes and conditions not expressly stated in this specification sheet are intended to be excluded and do not form a part of this specification sheet. 2. Electrical specifications and performance data contained herein are based on Mini-Circuit's applicable established test performance criteria and measurement instructions. 3. The parts covered by this specification sheet are subject to Mini-Circuits standard limited warranty and terms and conditions (collectively, "Standard Terms"); Purchasers of this part are entitled to the rights and benefits contained therein. For a full statement of the Standard Terms and the exclusive rights and remedies thereunder, please visit Mini-Circuits' website at [www.minicircuits.com/MCLStore/terms.jsp](http://www.minicircuits.com/MCLStore/terms.jsp).