

Low Pass Filter

VLF-5500+

50Ω *DC to 5500



CASE STYLE: FF704

Maximum Ratings

Operating Temperature	-55°C to 100°C
Storage Temperature	-55°C to 100°C
RF Power Input*	8W at 25°C
DC Current Input to Output	0.5A max. at 25°C

*Passband rating, derate linearly to 3 W at 100°C ambient
Permanent damage may occur if any of these limits are exceeded.

Features

- Rugged uni-body construction, small size
- 7 sections
- Excellent power handling, 8W
- Temperature stable
- Low cost
- Protected by US Patent 6,943,646

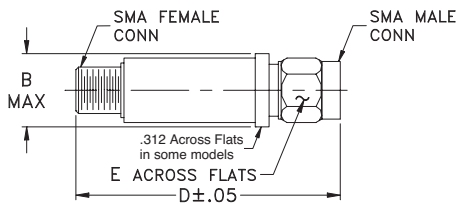
Connectors	Model	Price	Qty.
SMA	VLF-5500+	\$ 21.95 ea.	(1-9)

Applications

- Harmonic rejection
- Transmitters/receivers
- Lab use

+RoHS Compliant
The +Suffix identifies RoHS Compliance. See our web site for RoHS Compliance methodologies and qualifications

Outline Drawing

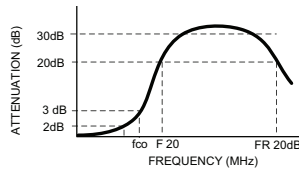


Low Pass Filter Electrical Specifications (T_{AMB} = 25°C)

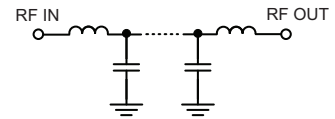
PASSBAND (MHz) (loss < 2 dB) Max.	f _{co} , MHz Nom. (loss 3 dB) Typ.	STOP BAND (MHz) (loss, dB)			VSWR (:1)		NO. OF SECTIONS
		F 20 Min.	30 Typ.	FR 20 Typ.	Stopband Typ.	Passband Typ.	
*DC - 5500	6200	7200	6770 - 9500	12100	17	1.3	7

* Not for use with DC voltage at input and output ports

Typical frequency response



Electrical schematic



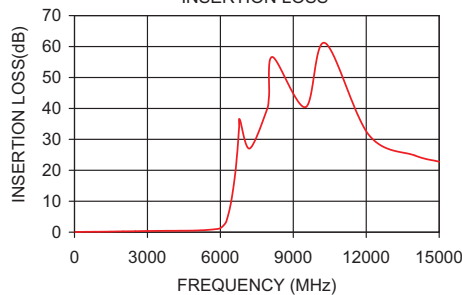
Outline Dimensions (inch/mm)

B	D	E	wt.
.410	1.43	.312	grams
10.41	36.32	7.92	10

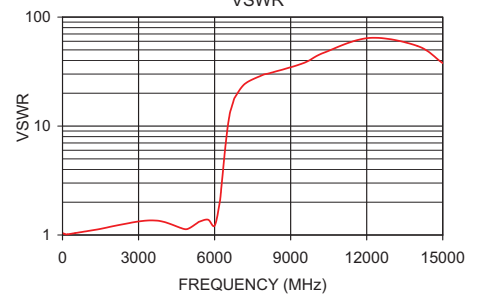
Typical Performance Data at 25°C

Frequency (MHz)	Insertion Loss (dB)	VSWR (:1)
40	0.04	1.04
500	0.12	1.04
1500	0.20	1.14
3000	0.39	1.33
4800	0.51	1.13
5500	0.81	1.37
6200	2.80	1.99
6300	4.85	3.30
6400	8.25	5.72
6550	15.66	10.96
6700	26.89	15.96
6770	34.76	17.75
7200	26.40	24.48
9500	40.75	37.77
10500	51.98	48.26
12100	32.16	64.35
15000	25.07	37.77

VLF-5500+
INSERTION LOSS



VLF-5500+
VSWR



For detailed performance specs & shopping online see web site

P.O. Box 350166, Brooklyn, New York 11235-0003 (718) 934-4500 Fax (718) 332-4661 The Design Engineers Search Engine Provides ACTUAL Data Instantly at minicircuits.com

Notes: 1. Performance and quality attributes and conditions not expressly stated in this specification sheet are intended to be excluded and do not form a part of this specification sheet. 2. Electrical specifications and performance data contained herein are based on Mini-Circuit's applicable established test performance criteria and measurement instructions. 3. The parts covered by this specification sheet are subject to Mini-Circuits standard limited warranty and terms and conditions (collectively, "Standard Terms"); Purchasers of this part are entitled to the rights and benefits contained therein. For a full statement of the Standard Terms and the exclusive rights and remedies thereunder, please visit Mini-Circuits' website at www.minicircuits.com/MCLStore/terms.jsp.