

Coaxial Bandpass Filter

VBFZ-5500+

50Ω 4900 to 6200 MHz

Maximum Ratings

Operating Temperature	-55°C to 100°C
Storage Temperature	-55°C to 100°C
RF Power Input*	7W at 25°C

*Passband rating, derate linearly to 3W at 100°C ambient. Permanent damage may occur if any of these limits are exceeded.

Features

- Good Rejection, 30dB up to 17GHz
- Low insertion loss
- Excellent power handling, 7W
- Temperature stable LTCC internal structure
- Rugged stainless steel unbody
- Protected by US Patent 6,943,646

Applications

- Harmonic rejection
- Transmitters/receivers
- Lab use
- Test instrumentation



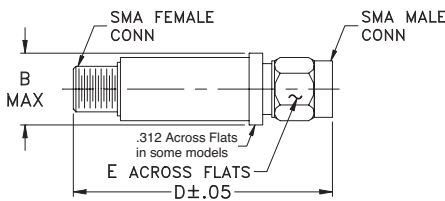
CASE STYLE: FF1145

Connectors	Model	Price	Qty.
SMA	VBFZ-5500-S+	\$39.95 ea.	(1-9)

+RoHS Compliant

The +Suffix identifies RoHS Compliance. See our web site for RoHS Compliance methodologies and qualifications

Outline Drawing



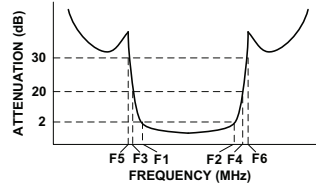
Outline Dimensions (inch mm)

B	D	E	wt.
.410	1.91	.312	grams
10.41	48.51	7.92	11.8

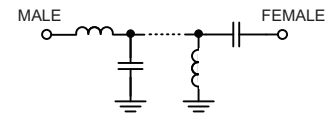
Bandpass Filter Electrical Specifications (T_{AMB} = 25°C)

CENTER FREQ. (MHz)	PASSBAND (MHz) (Loss < 2dB)	STOPBANDS (MHz)				VSWR (:1)		
		(Loss > 20dB)		(Loss 30dB Typ)		Passband		Stopband
Fc	F1 - F2	F3	F4	F5	F6	Typ.	Max.	Typ.
5500	4900 - 6200	3600	8600	3500	8600 - 17000	1.3	2.1	20

Typical Frequency Response

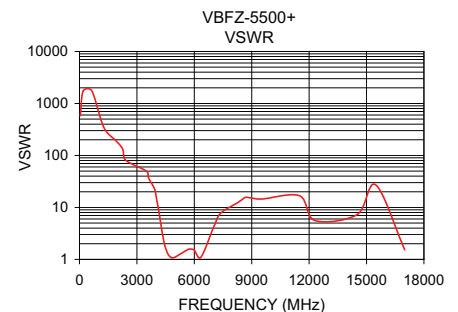
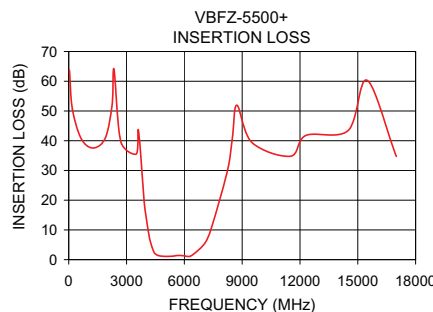


Functional Schematic



Typical Performance Data at 25°C

Frequency (MHz)	Insertion Loss (dB)	VSWR (:1)
50	60.32	868.59
1500	37.93	157.93
3500	35.51	49.64
3600	41.94	39.49
3750	30.57	30.49
4000	15.08	17.05
4150	8.84	8.31
4300	4.47	3.66
4450	2.28	1.91
4900	1.14	1.07
5500	1.26	1.43
6200	1.27	1.32
6800	2.83	2.39
7000	4.82	4.03
7300	8.94	7.05
7700	15.82	8.81
8200	28.73	11.77
8600	48.53	15.00
10000	39.46	10.50
17000	34.71	1.53



Mini-Circuits®
ISO 9001 ISO 14001 AS 9100 CERTIFIED
The Design Engineers Search Engine Provides ACTUAL Data Instantly at minicircuits.com
I/F/RF MICROWAVE COMPONENTS

For detailed performance specs & shopping online see web site

P.O. Box 350166, Brooklyn, New York 11235-0003 (718) 934-4500 Fax (718) 332-4661

Notes: 1. Performance and quality attributes and conditions not expressly stated in this specification sheet are intended to be excluded and do not form a part of this specification sheet. 2. Electrical specifications and performance data contained herein are based on Mini-Circuit's applicable established test performance criteria and measurement instructions. 3. The parts covered by this specification sheet are subject to Mini-Circuits standard limited warranty and terms and conditions (collectively, "Standard Terms"); Purchasers of this part are entitled to the rights and benefits contained therein. For a full statement of the Standard Terms and the exclusive rights and remedies thereunder, please visit Mini-Circuits' website at www.minicircuits.com/MCLStore/terms.jsp.

REV. B
M131793
EDR-8457/1U
VBFZ-5500+
URJ/RAV
121016
Page 1 of 1