

Coaxial Bandpass Filter

BBP-70+ BBP-70



50Ω Elliptic Response 63 to 77 MHz

Maximum Ratings

Operating Temperature	-55°C to 100°C
Storage Temperature	-55°C to 100°C
RF Power Input	0.5W max.

Permanent damage may occur if any of these limits are exceeded.

Features

- low insertion loss, 1.5 dB max.
- good selectivity, 1.76 typ. 20 dB/3dB BW ratio
- rugged shielded case

Applications

- high rejection applications
- image rejection
- IF signal processing

Connectors	Model	Price	Qty.
BNC	BBP-70(+)	\$40.95 ea.	(1-9)

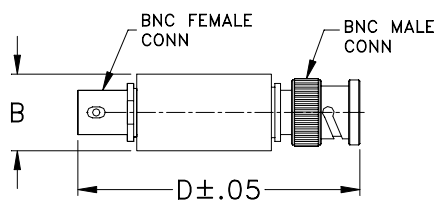
+ RoHS compliant in accordance with EU Directive (2002/95/EC)

The +Suffix identifies RoHS Compliance. See our web site for RoHS Compliance methodologies and qualifications.

Bandpass Filter Electrical Specifications

CENTER FREQ. (MHz)	PASSBAND (MHz) I.L. 1.5 dB Max.	3dB BANDWIDTH (MHz) Typ.	STOPBANDS		VSWR (:1)	
			(I. loss > 20 dB) at MHz	(I. loss > 35 dB) at MHz	Passband Max.	Stopband Typ.
70	63-77	58-82	51 & 94	6.0 & 193-1000	1.7	16

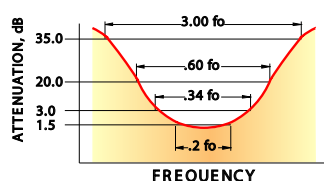
Outline Drawing



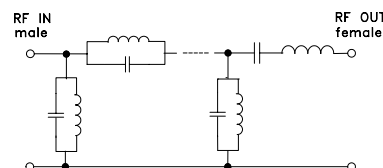
Outline Dimensions (inch/mm)

B	D	wt
.54	2.59	grams
13.72	65.79	40.0

typical frequency response



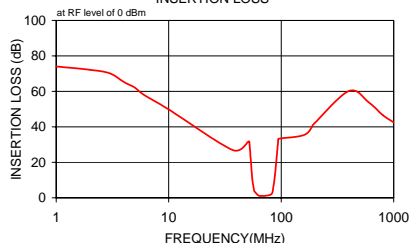
electrical schematic



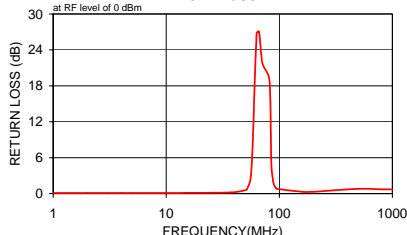
Typical Performance Data

Frequency (MHz)	Insertion Loss (dB)		Return Loss (dB)	Frequency (MHz)	Group Delay (nsec)
	\bar{x}	σ			
1.0	74.05	9.9	0.1	6.0	9.637
2.0	72.12	9.9	0.1	7.0	4.541
3.0	70.17	9.9	0.1	21.6	3.025
4.0	65.27	9.9	0.1	36.3	5.629
5.0	62.16	9.9	0.1	51.3	33.642
6.0	58.09	9.9	0.1	52.2	29.619
10.0	49.84	8.7	0.1	54.0	17.384
37.3	26.90	2.5	0.2	55.9	8.664
51.0	31.67	1.6	0.6	57.9	42.682
52.0	31.71	6.1	0.8	58.9	44.815
55.3	10.89	2.4	2.2	63.1	36.286
57.0	5.56	1.5	4.8	64.2	32.857
58.0	3.59	1.0	7.7	65.3	30.036
63.0	1.24	0.1	26.8	67.6	26.418
66.2	1.10	0.1	27.1	70.0	24.706
70.0	1.11	0.1	22.3	71.2	24.425
72.7	1.18	0.1	21.2	73.7	24.966
82.0	2.13	0.6	18.8	75.0	25.878
85.0	6.18	2.4	5.1	77.6	28.843
88.0	12.70	3.1	2.1	80.4	31.882
91.0	22.06	4.0	1.2	81.8	32.569
94.0	32.17	1.3	0.9	83.2	32.242
95.0	33.31	2.7	0.8	86.1	26.228
160.3	35.43	0.7	0.3	90.7	2.764
193.0	41.33	1.0	0.3	93.9	14.126
200.0	42.38	1.0	0.3	95.5	17.176
400.0	60.24	9.9	0.7	128.1	2.113
600.0	53.81	8.2	0.8	160.3	1.095
800.0	46.59	4.3	0.7	190.5	0.413
1000.0	42.50	2.9	0.7	193.9	0.375

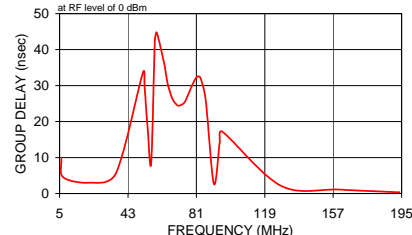
INSERTION LOSS



RETURN LOSS



GROUP DELAY



Mini-Circuits®
ISO 9001 ISO 14001 AS 9100 CERTIFIED

P.O. Box 350166, Brooklyn, New York 11235-0003 (718) 934-4500 Fax (718) 332-4661 The Design Engineers Search Engine Provides ACTUAL Data Instantly at minicircuits.com

IF/RF MICROWAVE COMPONENTS

For detailed performance specs & shopping online see web site

Notes: 1. Performance and quality attributes and conditions not expressly stated in this specification sheet are intended to be excluded and do not form a part of this specification sheet. 2. Electrical specifications and performance data contained herein are based on Mini-Circuits' applicable established test performance criteria and measurement instructions. 3. The parts covered by this specification sheet are subject to Mini-Circuits standard limited warranty and terms and conditions (collectively, "Standard Terms"); Purchasers of this part are entitled to the rights and benefits contained therein. For a full statement of the Standard Terms and the exclusive rights and remedies thereunder, please visit Mini-Circuits' website at www.minicircuits.com/MCLStore/terms.jsp.

REV. A
M98898
BBP-70
070411