

Surface Mount High Pass Filter

SXHP-48+

50Ω 54 to 1000 MHz

The Big Deal

- Low insertion loss
- High rejection
- Miniature shielded package



CASE STYLE: HF1139

Product Overview

SXHP-48+ is a 50Ω high pass filter fabricated using SMT technology. This high pass filter covers from 54-1000 MHz. This filter is built with high Q capacitors and wire wound inductors for superior performance. It has repeatable performance across lots and consistent performance across temperature.

Key Features

Feature	Advantages
Low insertion loss	Can be used in high performance applications.
Good rejection	This enables the filter to attenuate spurious signals and reject harmonics for broad band frequency band.
Small size, 0.44" X 0.74" X 0.27"	The small surface mount package enables the SXHP-48+

Notes

- A. Performance and quality attributes and conditions not expressly stated in this specification document are intended to be excluded and do not form a part of this specification document.
B. Electrical specifications and performance data contained in this specification document are based on Mini-Circuit's applicable established test performance criteria and measurement instructions.
C. The parts covered by this specification document are subject to Mini-Circuits standard limited warranty and terms and conditions (collectively, "Standard Terms"); Purchasers of this part are entitled to the rights and benefits contained therein. For a full statement of the Standard Terms and the exclusive rights and remedies thereunder, please visit Mini-Circuits' website at www.minicircuits.com/MCLStore/terms.jsp



Surface Mount High Pass Filter

50Ω 54 to 1000 MHz

SXHP-48+



CASE STYLE: HF1139
PRICE: \$12.70 ea. QTY (10)

Features

- Low insertion loss
- High rejection
- Miniature shielded package

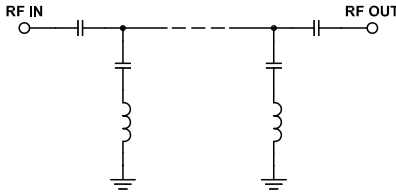
Electrical Specifications at 25°C

Parameter	F#	Frequency (MHz)	Min.	Typ.	Max.	Unit	
Stop Band	Rejection Loss	DC-F1	DC-42	20	30	-	dB
	VSWR	DC-F1	DC-42	-	20	-	:1
Pass Band	Insertion Loss	F2-F3	54-1000	-	0.6	2	dB
	VSWR	F2-F3	54-1000	-	1.3	1.92	:1

Applications

- SATCOM
- Broadband fiber networks
- CATV
- Radio communications
- Receivers / transformer

Functional Schematic



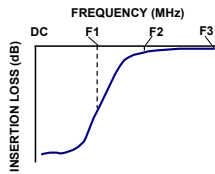
Maximum Ratings	
Operating Temperature	-40°C to 85°C
Storage Temperature	-55°C to 100°C
RF Power Input	0.5 W max.

Permanent damage may occur if any of these limits are exceeded.

Typical Performance Data at 25°C

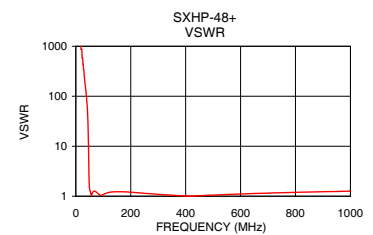
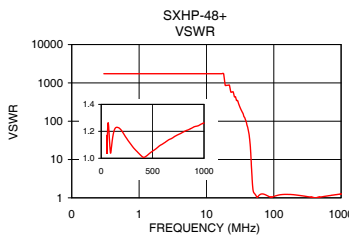
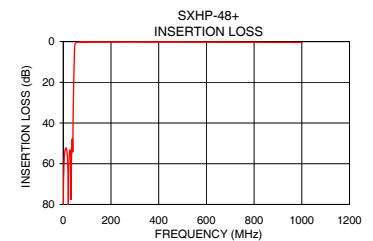
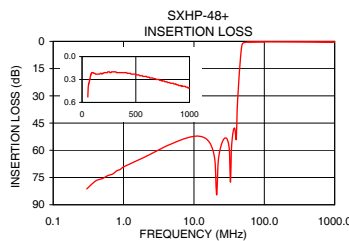
Frequency (MHz)	Insertion Loss (dB)	VSWR (:1)
0.3	81.29	1737.18
1.0	69.17	1737.18
5.0	56.16	1737.18
10.0	52.34	1737.18
35.0	53.59	157.93
37.0	47.99	124.09
40.0	53.90	78.97
42.0	30.84	56.04
43.0	24.24	44.55
45.0	13.16	19.98
47.0	4.64	4.99
48.0	2.33	2.61
49.0	1.30	1.71
50.0	0.92	1.42
51.0	0.76	1.33
54.0	0.53	1.17
65.0	0.35	1.25
250.0	0.20	1.14
600.0	0.26	1.11
1000.0	0.41	1.26

Typical Frequency Response



+RoHS Compliant

The +Suffix identifies RoHS Compliance. See our web site for RoHS Compliance methodologies and qualifications



Notes

- Performance and quality attributes and conditions not expressly stated in this specification document are intended to be excluded and do not form a part of this specification document.
- Electrical specifications and performance data contained in this specification document are based on Mini-Circuit's applicable established test performance criteria and measurement instructions.
- The parts covered by this specification document are subject to Mini-Circuits standard limited warranty and terms and conditions (collectively, "Standard Terms"); Purchasers of this part are entitled to the rights and benefits contained therein. For a full statement of the Standard Terms and the exclusive rights and remedies thereunder, please visit Mini-Circuits' website at www.minicircuits.com/MCLStore/terms.jsp



