

High Pass Filter

RHP-147+

50Ω 250 to 3000 MHz

Maximum Ratings

Operating Temperature	-40°C to 85°C
Storage Temperature	-55°C to 100°C
RF Power Input	0.5W at 25°C

Permanent damage may occur if any of these limits are exceeded.

Pin Connections

INPUT	2
OUTPUT	6
GROUND	1, 3, 4, 5, 7, 8

Features

- low insertion loss, 0.5dB typ. @ passband
- high rejection
- shielded case
- aqueous washable



CASE STYLE: GP731
PRICE: \$12.70 ea. QTY (10)

+RoHS Compliant

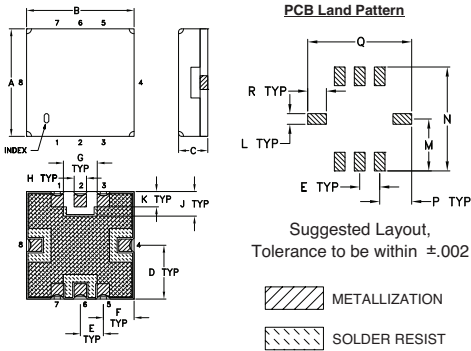
The +Suffix identifies RoHS Compliance. See our web site for RoHS Compliance methodologies and qualifications

Available Tape and Reel at no extra cost	
Reel Size	Devices/Reel
7"	10, 20, 50, 100, 200
13"	500, 1000

Applications

- transmitters / receivers
- sub-harmonic rejection

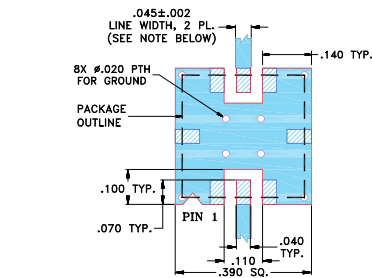
Outline Drawing



Outline Dimensions (inch/mm)

A	B	C	D	E	F	G	H	J
.350	.350	.100	.175	.075	.100	.110	.040	.080
8.89	8.89	2.54	4.45	1.93	2.54	2.79	1.02	2.03
K	L	M	N	P	Q	R	wt.	
.050	.040	.195	.390	.120	.390	.070	grams	
1.27	1.02	4.95	9.91	3.05	9.91	1.78	0.25	

Demo Board MCL P/N: TB-332
Suggested PCB Layout (PL-176)

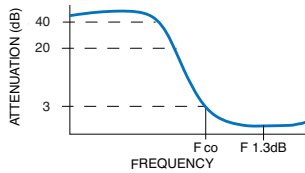


- NOTES:**
1. TRACE WIDTH IS SHOWN FOR FR4 WITH DIELECTRIC THICKNESS .025" ± .002"; COPPER: 1/2 OZ. EACH SIDE. FOR OTHER MATERIALS TRACE WIDTH MAY NEED TO BE MODIFIED.
 2. BOTTOM SIDE OF THE PCB IS CONTINUOUS GROUND PLANE.
- DENOTES PCB COPPER LAYOUT WITH SMOBC (SOLDER MASK OVER BARE COPPER)
 - DENOTES COPPER LAND PATTERN FREE OF SOLDER MASK

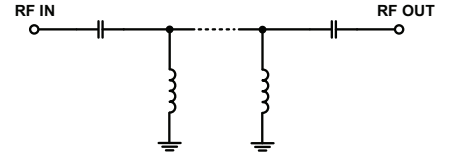
High Pass Filter Electrical Specifications (T_{AMB} = 25°C)

STOPBAND (MHz)	f _{co} , MHz Nom.	PASSBAND (MHz)	VSWR (:1)
(Loss > 40dB)	(Loss > 20dB)	(Loss < 1dB)	Stopband Typ. Passband Typ.
DC - 80	DC - 105	250 - 3000	18 1.2

Typical Frequency Response

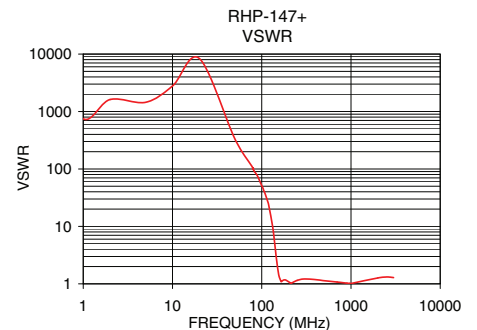
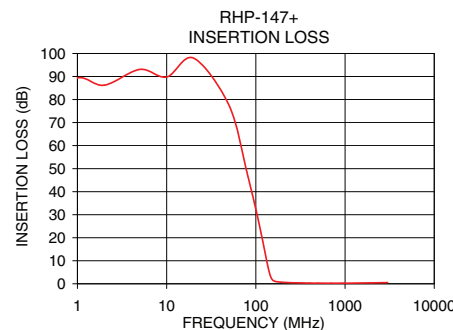


Functional Schematic



Typical Performance Data at 25°C

Frequency (MHz)	Insertion Loss (dB)	VSWR (:1)
1.0	89.38	750.48
10.0	89.79	2784.52
50.0	77.52	334.16
80.0	47.98	99.04
105.0	28.76	42.62
120.0	18.18	23.01
132.5	9.87	9.96
140.0	5.65	4.92
147.0	2.98	2.56
153.0	1.77	1.64
180.0	0.82	1.17
250.0	0.46	1.15
500.0	0.28	1.13
700.0	0.24	1.07
1000.0	0.25	1.01
2000.0	0.39	1.27
2500.0	0.47	1.32
3000.0	0.51	1.28



For detailed performance specs & shopping online see web site

P.O. Box 350166, Brooklyn, New York 11235-0003 (718) 934-4500 Fax (718) 332-4661 The Design Engineers Search Engine Provides ACTUAL Data Instantly at minicircuits.com

Notes: 1. Performance and quality attributes and conditions not expressly stated in this specification sheet are intended to be excluded and do not form a part of this specification sheet. 2. Electrical specifications and performance data contained herein are based on Mini-Circuit's applicable established test performance criteria and measurement instructions. 3. The parts covered by this specification sheet are subject to Mini-Circuits standard limited warranty and terms and conditions (collectively, "Standard Terms"); Purchasers of this part are entitled to the rights and benefits contained therein. For a full statement of the Standard Terms and the exclusive rights and remedies thereunder, please visit Mini-Circuits' website at www.minicircuits.com/MCLStore/terms.jsp.

REV. OR
M114801
EDR-8693U
RHP-147+
URJ/RAV
120912
Page 1 of 1