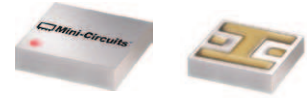


Ceramic High Pass Filter

HFTC-16+

50Ω 1900 to 2700 MHz



Maximum Ratings

Operating Temperature	-55°C to 100°C
Storage Temperature	-55°C to 125°C

Permanent damage may occur if any of these limits are exceeded.

Pin Connections

RF IN	2
RF OUT	5
GROUND	1,3,4,6

Features

- miniature size, 0.15"X0.15"
- low profile, 0.028" height
- low pass-band insertion loss, 1.0 dB typ.
- excellent input power handling, 14W
- hermetically sealed

CASE STYLE: FR933
PRICE: \$3.75 ea. QTY. (20)

+RoHS Compliant
The +Suffix identifies RoHS Compliance. See our web site for RoHS Compliance methodologies and qualifications

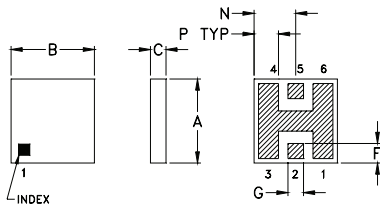
Applications

- sub-harmonic rejection
- transmitters/receivers
- dc blocking

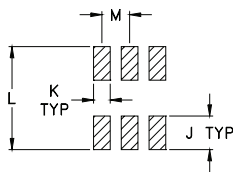
Available Tape and Reel at no extra cost

Reel Size	Devices/Reel
7"	20, 50, 100, 200, 500, 1000
13"	2000, 4000

Outline Drawing



PCB Land Pattern

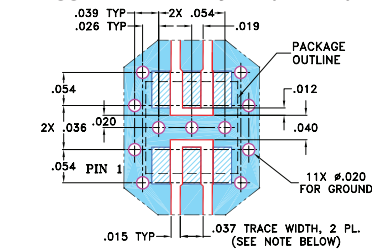


Suggested Layout,
Tolerance to be within ±0.02

Outline Dimensions (inch/mm)

A	B	C	D	E	F	G	H
.150	.150	.034	--	--	.035	.028	--
3.81	3.81	0.86	--	--	0.89	0.71	--
J	K	L	M	N	P	wt	
.060	.030	.184	.050	.075	.044	grams	
1.52	0.76	4.67	1.27	1.91	1.12	0.15	

Demo Board MCL P/N: TB-233 Suggested PCB Layout (PL-112)



- NOTES: 1. TRACE WIDTH IS SHOWN FOR ROGERS RO4350B WITH DIELECTRIC THICKNESS 0.020" ± 0.0015"; COPPER: 1/2 OZ. EACH SIDE. FOR OTHER MATERIALS TRACE WIDTH MAY NEED TO BE MODIFIED.
2. BOTTOM SIDE OF THE PCB IS CONTINUOUS GROUND PLANE.
■ DENOTES PCB COPPER LAYOUT WITH SMOBC (SOLDER MASK OVER BARE COPPER)
■ DENOTES COPPER LAND PATTERN FREE OF SOLDER MASK

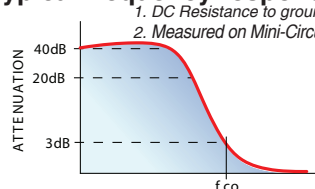
Electrical Specifications¹ (T_{AMB}=25°C)

STOP BAND (MHz)	f _{co} , MHz Nom.	PASSBAND (MHz)	VSWR (:1)	POWER INPUT* (W)	MARKING	NO. OF SECTIONS
(loss > 40 dB)	(loss 3 dB)	(loss < 1.3 dB)	Stopband Passband			
DC-1030	Typ.	Typ.	Typ. Typ.			
1300	1580	1900-2700	18 1.3	14	HF2	7

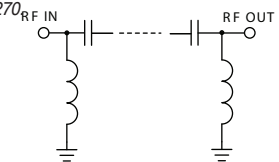
* Derate linearly to 6W at 100°C ambient.

1. Measured on Mini-Circuits Characterization Test Board TB-233.

typical frequency response

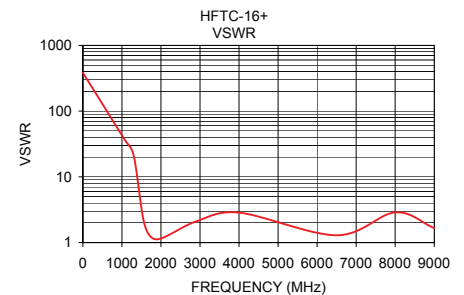
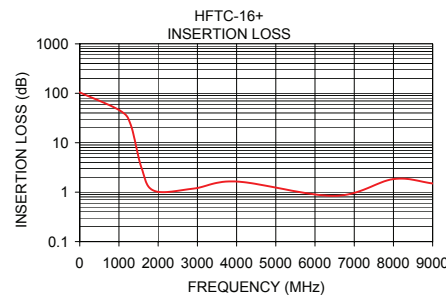


electrical schematic



Typical Performance Data at 25°C

Frequency (MHz)	Insertion Loss (dB)	VSWR (:1)
1.00	104.25	384.41
1030.00	44.43	40.06
1300.00	23.10	21.36
1580.00	3.03	1.89
1900.00	1.06	1.12
2900.00	1.18	2.10
4000.00	1.64	2.86
6500.00	0.84	1.29
8000.00	1.84	2.88
9000.00	1.50	1.66



Notes

- A. Performance and quality attributes and conditions not expressly stated in this specification document are intended to be excluded and do not form a part of this specification document.
B. Electrical specifications and performance data contained in this specification document are based on Mini-Circuit's applicable established test performance criteria and measurement instructions.
C. The parts covered by this specification document are subject to Mini-Circuits standard limited warranty and terms and conditions (collectively, "Standard Terms"); Purchasers of this part are entitled to the rights and benefits contained therein. For a full statement of the Standard Terms and the exclusive rights and remedies thereunder, please visit Mini-Circuits' website at www.minicircuits.com/MCLStore/terms.jsp

