

Low Pass Filter

SXLP-700+

50Ω DC to 700 MHz

Maximum Ratings

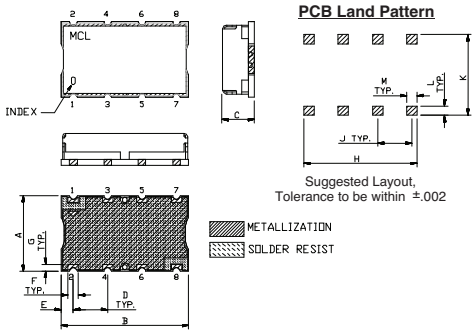
Operating Temperature	-40°C to 85°C
Storage Temperature	-55°C to 100°C
RF Power Input	0.5W Max.

Permanent damage may occur if any of these limits are exceeded.

Pin Connections

INPUT	1
OUTPUT	8
GROUND	2, 3, 4, 5, 6, 7

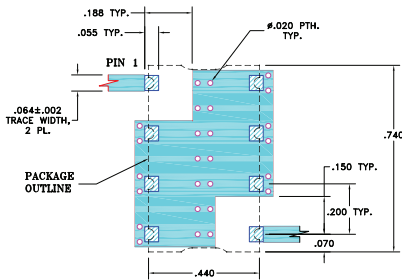
Outline Drawing



Outline Dimensions (inch/mm)

A	B	C	D	E	F	
.44	.74	.27	.200	.07	.060	
11.18	18.80	6.86	5.08	1.78	1.52	
G	H	J	K	L	M	wt.
.040	.660	.200	.470	.055	.060	grams
1.02	16.76	5.08	11.94	1.40	1.52	3.0

Demo Board MCL P/N: TB-368 Suggested PCB Layout (PL-230)

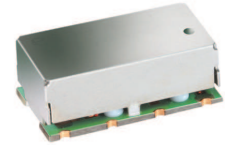


Features

- high rejection
- sharp cut-off
- shielded package
- aqueous washable
- low cost

Applications

- defense communications
- receivers / transmitters
- harmonic rejection



CASE STYLE: HF1139
 PRICE: \$12.95 ea. QTY (1-9)

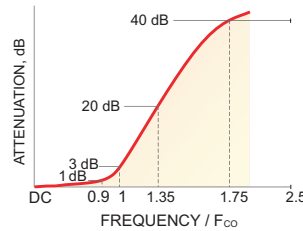
+RoHS Compliant

The +Suffix identifies RoHS Compliance. See our web site for RoHS Compliance methodologies and qualifications

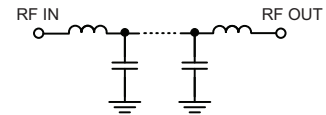
Low Pass Filter Electrical Specifications (T_{AMB} = 25°C)

PASSBAND (MHz)	f _{co} , MHz Nom.	STOPBAND (MHz)		VSWR (:1)	
		(Loss > 20dB)	(Loss > 40dB)	Passband Typ.	Stopband Typ.
DC - 700	770	1000 - 1300	1300 - 2000	1.7	18

Typical Frequency Response

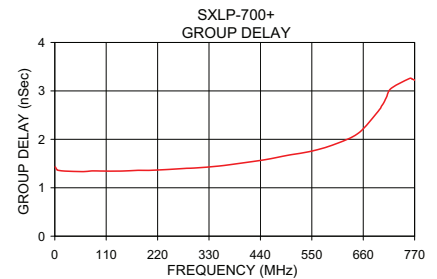
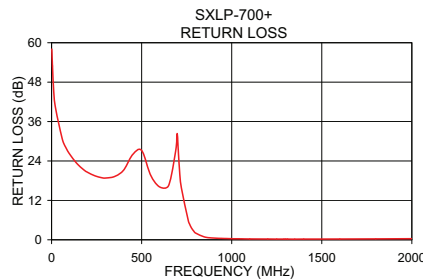
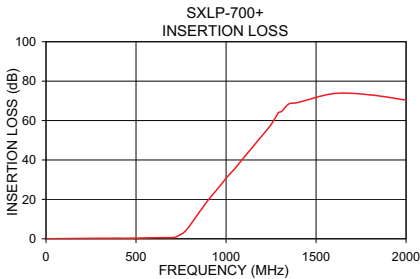


Functional Schematic



Typical Performance Data at 25°C

Frequency (MHz)	Insertion Loss (dB)		Return Loss (dB)	Frequency (MHz)	Group Delay (nSec)
	\bar{x}	σ			
1.0	0.01	0.00	58.08	1.0	1.43
60.0	0.07	0.00	30.60	10.0	1.36
100.0	0.09	0.00	26.13	20.0	1.35
200.0	0.17	0.01	20.53	60.0	1.33
500.0	0.32	0.01	27.19	80.0	1.35
700.0	0.62	0.01	30.67	100.0	1.35
720.0	0.79	0.04	16.08	140.0	1.34
760.0	2.53	0.15	5.58	200.0	1.36
770.0	3.28	0.17	4.29	240.0	1.38
800.0	6.51	0.25	2.04	300.0	1.41
850.0	13.04	0.26	0.84	350.0	1.45
900.0	19.36	0.29	0.53	400.0	1.51
1000.0	30.63	0.31	0.33	450.0	1.58
1100.0	41.29	0.35	0.26	500.0	1.67
1200.0	52.82	0.82	0.23	550.0	1.76
1300.0	64.91	2.02	0.22	600.0	1.90
1400.0	69.54	4.11	0.21	650.0	2.13
1600.0	70.63	4.33	0.24	700.0	2.70
1800.0	74.93	3.28	0.28	720.0	3.05
2000.0	71.30	1.17	0.33	770.0	3.22



For detailed performance specs & shopping online see web site

P.O. Box 350166, Brooklyn, New York 11235-0003 (718) 934-4500 Fax (718) 332-4661 The Design Engineers Search Engine Provides ACTUAL Data Instantly at minicircuits.com

Notes: 1. Performance and quality attributes and conditions not expressly stated in this specification sheet are intended to be excluded and do not form a part of this specification sheet. 2. Electrical specifications and performance data contained herein are based on Mini-Circuit's applicable established test performance criteria and measurement instructions. 3. The parts covered by this specification sheet are subject to Mini-Circuits standard limited warranty and terms and conditions (collectively, "Standard Terms"); Purchasers of this part are entitled to the rights and benefits contained therein. For a full statement of the Standard Terms and the exclusive rights and remedies thereunder, please visit Mini-Circuits' website at www.minicircuits.com/MCLStore/terms.jsp.

REV. OR
 M112220
 EDR-7485/1U
 SXLP-700+
 URJ/RAV
 121016
 Page 1 of 1