

Low Pass Filter

SXLP-65+

50Ω DC to 65 MHz

Maximum Ratings

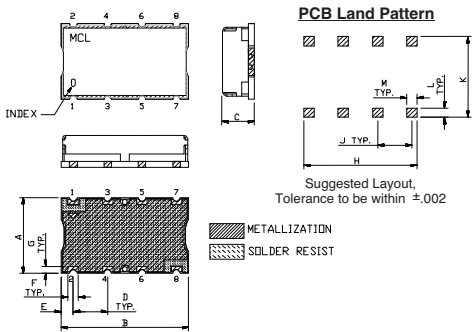
Operating Temperature	-40°C to 85°C
Storage Temperature	-55°C to 100°C
RF Power Input	0.5W Max.

Permanent damage may occur if any of these limits are exceeded.

Pin Connections

INPUT	1
OUTPUT	8
GROUND	2, 3, 4, 5, 6, 7

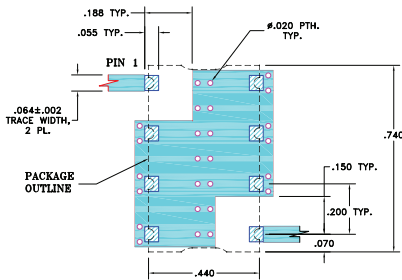
Outline Drawing



Outline Dimensions (inch/mm)

A	B	C	D	E	F	G	H	J	K	L	M	wt.
.44	.74	.27	.200	.07	.060	11.18	18.80	6.86	5.08	1.78	1.52	
						1.02	16.76	5.08	11.94	1.40	1.52	3.0

Demo Board MCL P/N: TB-368 Suggested PCB Layout (PL-230)

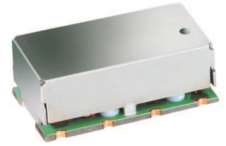


Features

- high rejection
- sharp cut-off
- shielded package
- aqueous washable
- low cost

Applications

- defense communications
- receivers / transmitters
- harmonic rejection



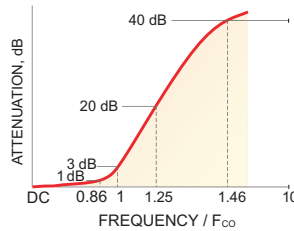
CASE STYLE: HF1139
PRICE: \$ 8.95 ea. QTY (1-9)

+RoHS Compliant
The +Suffix identifies RoHS Compliance. See our web site for RoHS Compliance methodologies and qualifications

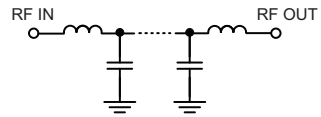
Low Pass Filter Electrical Specifications (T_{AMB} = 25°C)

PASSBAND (MHz)	f _{co} , MHz Nom.	STOPBAND (MHz)		VSWR (:1)	
		(Loss > 20dB)	(Loss > 40dB)	Passband Typ.	Stopband Typ.
DC - 65	71	86 - 96	96 - 710	1.3	18

Typical Frequency Response

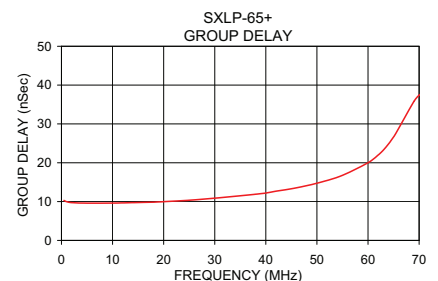
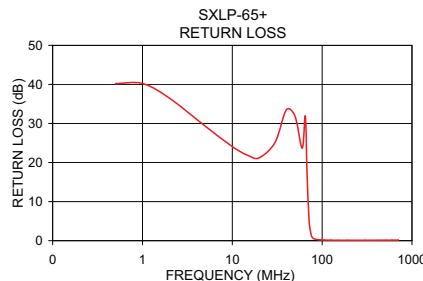
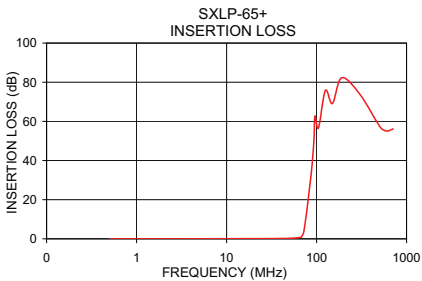


Functional Schematic



Typical Performance Data at 25°C

Frequency (MHz)	Insertion Loss (dB)		Return Loss (dB)	Frequency (MHz)	Group Delay (nSec)
	\bar{x}	σ			
0.5	0.00	0.00	40.20	0.5	10.29
2.0	0.01	0.00	36.47	2.0	9.73
4.0	0.02	0.00	31.19	10.0	9.61
8.0	0.04	0.00	25.68	12.0	9.67
12.5	0.08	0.01	22.69	14.0	9.74
40.0	0.17	0.00	33.51	18.0	9.85
55.0	0.34	0.01	34.56	20.0	9.98
65.0	0.65	0.01	31.87	25.0	10.34
69.0	1.43	0.05	12.39	30.0	10.87
71.0	2.83	0.07	6.52	35.0	11.49
73.0	5.41	0.09	3.26	38.0	11.90
76.0	10.87	0.14	1.27	40.0	12.20
81.0	20.98	0.18	0.50	42.0	12.67
86.0	31.32	0.19	0.33	44.0	13.07
96.0	63.99	1.46	0.22	47.0	13.82
200.0	84.35	1.60	0.11	51.0	15.08
300.0	74.14	0.71	0.12	55.0	16.76
400.0	61.96	0.21	0.13	62.0	22.01
500.0	57.17	0.22	0.13	65.0	26.64
710.0	56.34	0.33	0.16	70.0	37.39



For detailed performance specs & shopping online see web site

P.O. Box 350166, Brooklyn, New York 11235-0003 (718) 934-4500 Fax (718) 332-4661 The Design Engineers Search Engine Provides ACTUAL Data Instantly at minicircuits.com

Notes: 1. Performance and quality attributes and conditions not expressly stated in this specification sheet are intended to be excluded and do not form a part of this specification sheet. 2. Electrical specifications and performance data contained herein are based on Mini-Circuit's applicable established test performance criteria and measurement instructions. 3. The parts covered by this specification sheet are subject to Mini-Circuits standard limited warranty and terms and conditions (collectively, "Standard Terms"); Purchasers of this part are entitled to the rights and benefits contained therein. For a full statement of the Standard Terms and the exclusive rights and remedies thereunder, please visit Mini-Circuits' website at www.minicircuits.com/MCLStore/terms.jsp.

REV. OR
M112220
EDR-7484/1U
SXLP-65+
URJ/RAV
121016
Page 1 of 1