

# Low Pass Filter

## SXLP-25+

50Ω DC to 25 MHz

### Maximum Ratings

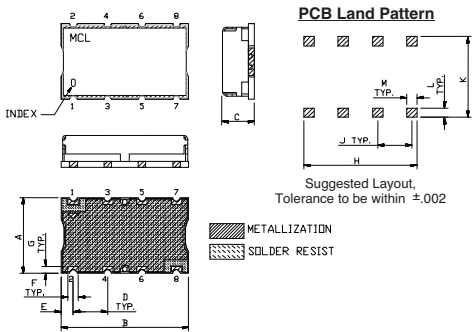
Operating Temperature	-40°C to 85°C
Storage Temperature	-55°C to 100°C
RF Power Input	0.5W Max.

Permanent damage may occur if any of these limits are exceeded.

### Pin Connections

INPUT	1
OUTPUT	8
GROUND	2, 3, 4, 5, 6, 7

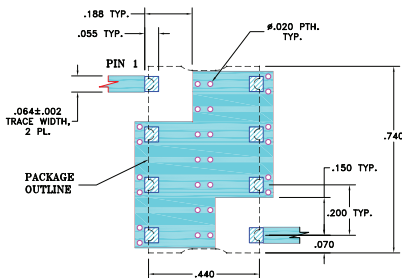
### Outline Drawing



### Outline Dimensions (inch/mm)

A	B	C	D	E	F	
.44	.74	.27	.200	.07	.060	
11.18	18.80	6.86	5.08	1.78	1.52	
G	H	J	K	L	M	wt.
.040	.660	.200	.470	.055	.060	grams
1.02	16.76	5.08	11.94	1.40	1.52	3.0

### Demo Board MCL P/N: TB-368 Suggested PCB Layout (PL-230)



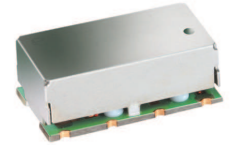
- NOTE:
- TRACE WIDTH IS SHOWN FOR FR4 WITH DIELECTRIC THICKNESS: .025" ± .002"; COPPER: 1/2 OZ. EACH SIDE. FOR OTHER MATERIALS TRACE WIDTH MAY NEED TO BE MODIFIED.
  - BOTTOM SIDE OF THE PCB IS CONTINUOUS GROUND PLANE.
- DENOTES PCB COPPER LAYOUT WITH SMOBC (SOLDER MASK OVER BARE COPPER)
  - DENOTES COPPER LAND PATTERN FREE OF SOLDER MASK

### Features

- high rejection
- sharp cut-off
- shielded package
- aqueous washable
- low cost

### Applications

- defense communications
- receivers / transmitters
- harmonic rejection



CASE STYLE: HF1139  
PRICE: \$11.45 ea. QTY (1-9)

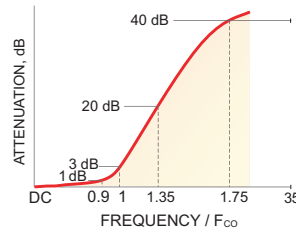
### +RoHS Compliant

The +Suffix identifies RoHS Compliance. See our web site for RoHS Compliance methodologies and qualifications

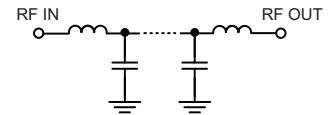
### Low Pass Filter Electrical Specifications (T<sub>AMB</sub> = 25°C)

PASSBAND (MHz)	f <sub>co</sub> , MHz Nom.	STOPBAND (MHz)		VSWR (:1)	
		(Loss > 20dB)	(Loss > 40dB)	Passband Typ.	Stopband Typ.
DC - 25	28	36 - 47	47 - 1000	1.7	18

### Typical Frequency Response

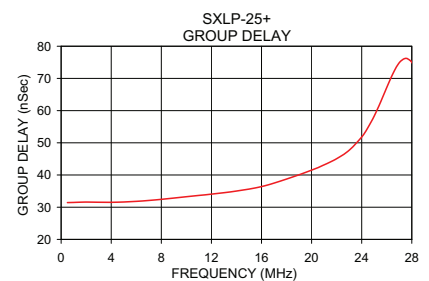
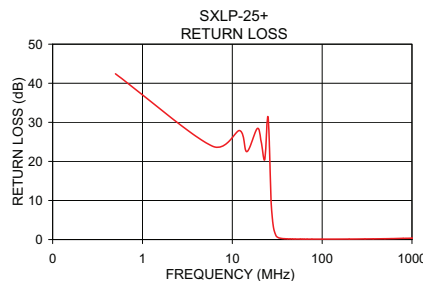
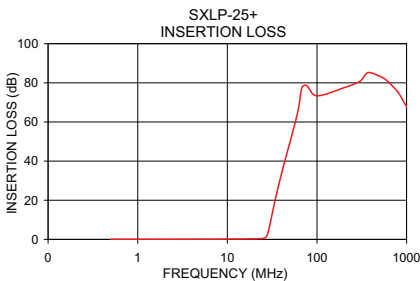


### Functional Schematic



### Typical Performance Data at 25°C

Frequency (MHz)	Insertion Loss (dB)		Return Loss (dB)	Frequency (MHz)	Group Delay (nSec)
	$\bar{x}$	$\sigma$			
0.5	0.02	0.00	42.42	0.5	31.44
1.5	0.04	0.00	31.78	2.0	31.60
4.0	0.08	0.00	24.60	4.0	31.51
12.0	0.16	0.01	27.89	6.0	31.81
21.0	0.31	0.01	24.97	8.0	32.44
25.0	0.45	0.01	31.31	10.0	33.25
26.5	0.82	0.02	13.63	12.0	34.06
27.4	1.66	0.04	7.70	14.0	35.03
28.0	2.67	0.06	5.16	16.0	36.41
29.0	5.11	0.11	2.63	18.0	38.75
31.0	11.27	0.18	0.86	20.0	41.51
36.0	24.96	0.31	0.27	21.0	43.15
47.0	45.89	0.87	0.15	22.0	45.08
100.0	73.69	1.56	0.11	23.0	47.69
300.0	83.77	2.45	0.16	24.0	51.81
500.0	84.18	1.52	0.22	25.0	58.31
800.0	75.17	1.62	0.31	26.5	71.54
1000.0	68.20	1.94	0.37	28.0	74.97



For detailed performance specs & shopping online see web site

P.O. Box 350166, Brooklyn, New York 11235-0003 (718) 934-4500 Fax (718) 332-4661 The Design Engineers Search Engine Provides ACTUAL Data Instantly at [minicircuits.com](http://minicircuits.com)

Notes: 1. Performance and quality attributes and conditions not expressly stated in this specification sheet are intended to be excluded and do not form a part of this specification sheet. 2. Electrical specifications and performance data contained herein are based on Mini-Circuit's applicable established test performance criteria and measurement instructions. 3. The parts covered by this specification sheet are subject to Mini-Circuits standard limited warranty and terms and conditions (collectively, "Standard Terms"); Purchasers of this part are entitled to the rights and benefits contained therein. For a full statement of the Standard Terms and the exclusive rights and remedies thereunder, please visit Mini-Circuits' website at [www.minicircuits.com/MCLStore/terms.jsp](http://www.minicircuits.com/MCLStore/terms.jsp).

REV. OR  
M112220  
EDR-7473/1U  
SXLP-25+  
URJ/RAV  
121015  
Page 1 of 1