

Surface Mount Bandpass Filter

SXBP-1500+

50Ω 1350 to 1650 MHz

The Big Deal

- Fast roll-off on the upper sideband
- Good Matching and low loss in the pass band
- Miniature shielded package



CASE STYLE: HF1139

Product Overview

SXBP-1500+ is a wideband bandpass filter in a miniature shielded package covering 1350 to 1650 MHz. This is designed for asymmetric rejection applications such as super-heterodyne receivers. By having asymmetric band, faster roll-off at upper side band is achieved in a comparatively smaller package and lower pass band insertion loss. It has repeatable performance across lots and consistent performance across temperature

Key Features

Feature	Advantages
Fast roll-off on the upper side band	Wide bandwidth filter with fast-roll off on the upper side band, which increases selectivity on the adjacent channel.
Good matching and low loss in pass band	This filter has good matching and low loss in the pass band
High power handling	This model uses high Q capacitors and high current handling inductors which is well suited for high power applications.
Small size, 0.44" X 0.74" X 0.27"	The surface mount package enables the SXBP-1500+ to be used in compact designs.

Notes

- A. Performance and quality attributes and conditions not expressly stated in this specification document are intended to be excluded and do not form a part of this specification document.
B. Electrical specifications and performance data contained in this specification document are based on Mini-Circuit's applicable established test performance criteria and measurement instructions.
C. The parts covered by this specification document are subject to Mini-Circuits standard limited warranty and terms and conditions (collectively, "Standard Terms"); Purchasers of this part are entitled to the rights and benefits contained therein. For a full statement of the Standard Terms and the exclusive rights and remedies thereunder, please visit Mini-Circuits' website at www.minicircuits.com/MCLStore/terms.jsp



Surface Mount Bandpass Filter

SXBP-1500+

50Ω 1350 to 1650 MHz



CASE STYLE: HF1139
PRICE: \$17.95 ea. QTY (1-9)

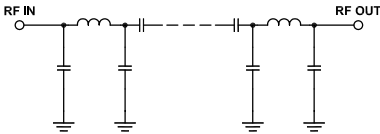
Features

- Wide bandwidth
- Better rejection
- Miniature shielded package

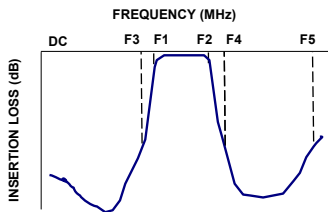
Applications

- Aviation and Aeronautical
- Digital audio broadcasting
- Maritime
- Mobile satellite
- Radio astronomy
- Wireless medical telemetry

Functional Schematic



Typical Frequency Response



Electrical Specifications at 25°C

Parameter	F#	Frequency (MHz)	Min.	Typ.	Max.	Unit
Pass Band	Center Frequency	-	-	1500	-	MHz
	Insertion Loss	F1-F2	1350-1650	0.6	2.0	dB
	VSWR	F1-F2	1350-1650	1.2	2.3	:1
Stop Band, Lower	Insertion Loss	DC-F3	DC-75	20.0	30.0	dB
	VSWR	DC-F3	DC-75	20.0	-	:1
Stop Band, Upper	Insertion Loss	F4-F5	2160-3700	20.0	29.0	dB
	VSWR	F4-F5	2160-3700	-	20.0	:1

Maximum Ratings

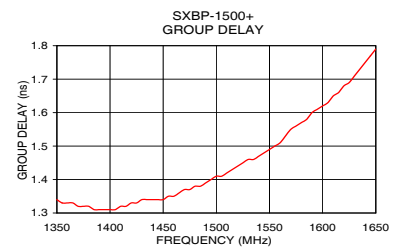
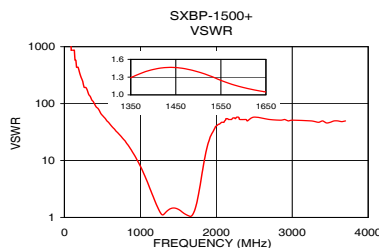
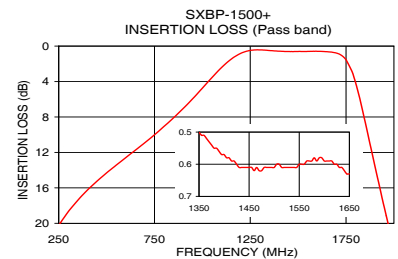
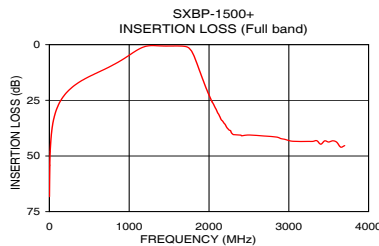
Operating Temperature	-40°C to 85°C
Storage Temperature	-55°C to 100°C
RF Power Input	4 W max.

Permanent damage may occur if any of these limits are exceeded.

Typical Performance Data at 25°C

Frequency (MHz)	Insertion Loss (dB)	VSWR (:1)	Frequency (MHz)	Group Delay (nsec)
1	68.25	1737.18	1350	1.34
20	42.08	1737.18	1360	1.33
75	30.62	1737.18	1380	1.32
150	24.62	579.06	1400	1.31
240	20.60	248.17	1420	1.33
400	16.25	96.51	1440	1.34
800	9.06	22.00	1450	1.34
1060	3.32	5.31	1460	1.35
1140	1.65	2.89	1480	1.38
1200	0.82	1.83	1500	1.41
1350	0.50	1.29	1520	1.44
1500	0.61	1.39	1540	1.47
1650	0.63	1.05	1560	1.51
1790	3.42	3.89	1580	1.57
1900	13.46	21.46	1600	1.62
1970	20.06	34.75	1610	1.65
2110	30.68	49.64	1620	1.68
2160	33.99	52.65	1630	1.71
3250	43.44	49.64	1640	1.75
3700	45.35	49.64	1650	1.79

+RoHS Compliant
The +Suffix identifies RoHS Compliance. See our web site for RoHS Compliance methodologies and qualifications



Notes

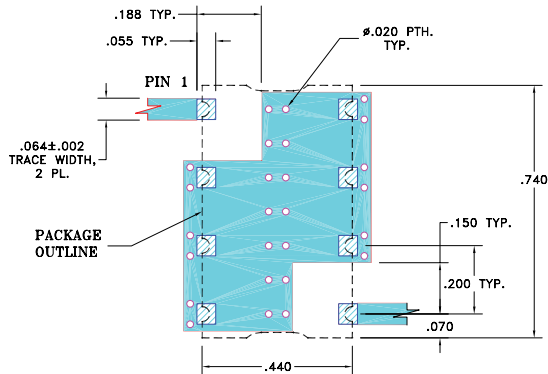
- Performance and quality attributes and conditions not expressly stated in this specification document are intended to be excluded and do not form a part of this specification document.
- Electrical specifications and performance data contained in this specification document are based on Mini-Circuit's applicable established test performance criteria and measurement instructions.
- The parts covered by this specification document are subject to Mini-Circuits standard limited warranty and terms and conditions (collectively, "Standard Terms"); Purchasers of this part are entitled to the rights and benefits contained therein. For a full statement of the Standard Terms and the exclusive rights and remedies thereunder, please visit Mini-Circuits' website at www.minicircuits.com/MCLStore/terms.jsp



Pad Connections

INPUT	1
OUTPUT	8
GROUND	2,3,4,5,6,7

Demo Board MCL P/N: TB-368+ Suggested PCB Layout (PL-230)

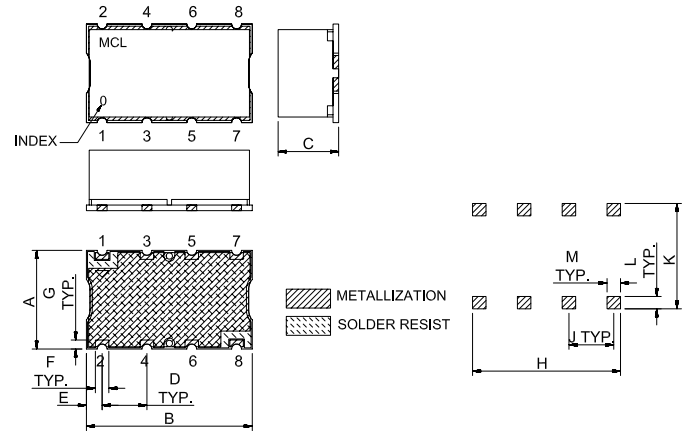


NOTE:

- TRACE WIDTH IS SHOWN FOR FR4 WITH DIELECTRIC THICKNESS: .025" ± .002". COPPER: 1/2 OZ. EACH SIDE. FOR OTHER MATERIALS TRACE WIDTH MAY NEED TO BE MODIFIED.
- BOTTOM SIDE OF THE PCB IS CONTINUOUS GROUND PLANE.

- DENOTES PCB COPPER LAYOUT WITH SMOBC (SOLDER MASK OVER BARE COPPER)
- DENOTES COPPER LAND PATTERN FREE OF SOLDER MASK

Outline Drawing



Outline Dimensions (inch/mm)

A	B	C	D	E	F	G
.44	.74	.27	.200	.07	.060	.040
11.18	18.80	6.86	5.08	1.78	1.52	1.02
H	J	K	L	M	wt	
.660	.200	.470	.055	.060	grams	
16.76	5.08	11.94	1.40	1.52	3.0	

Notes

- Performance and quality attributes and conditions not expressly stated in this specification document are intended to be excluded and do not form a part of this specification document.
- Electrical specifications and performance data contained in this specification document are based on Mini-Circuit's applicable established test performance criteria and measurement instructions.
- The parts covered by this specification document are subject to Mini-Circuits standard limited warranty and terms and conditions (collectively, "Standard Terms"); Purchasers of this part are entitled to the rights and benefits contained therein. For a full statement of the Standard Terms and the exclusive rights and remedies thereunder, please visit Mini-Circuits' website at www.minicircuits.com/MCLStore/terms.jsp