

# Surface Mount Bandpass Filter

## SXBP-615+

50Ω 565 to 670 MHz

### Maximum Ratings

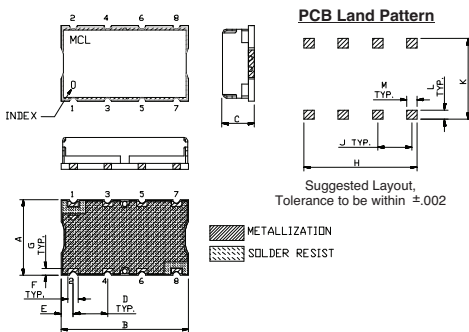
Operating Temperature	-40°C to 85°C
Storage Temperature	-55°C to 100°C
RF Power Input	0.5W Max.

Permanent damage may occur if any of these limits are exceeded.

### Pin Connections

INPUT	1
OUTPUT	8
GROUND	2, 3, 4, 5, 6, 7

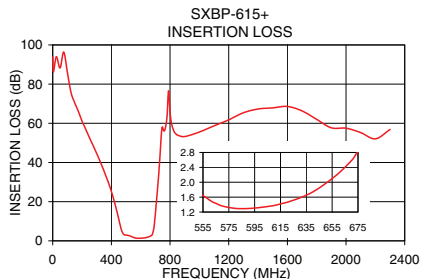
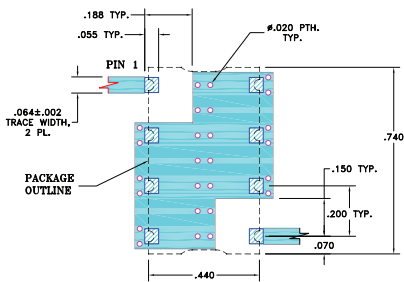
### Outline Drawing



### Outline Dimensions (inch/mm)

	A	B	C	D	E	F		
	.44	.74	.27	.200	.07	.060		
	11.18	18.80	6.86	5.08	1.78	1.52		
	G	H	J	K	L	M	wt.	
	.040	.660	.200	.470	.055	.060	grams	
	1.02	16.76	5.08	11.94	1.40	1.52	3.0	

### Demo Board MCL P/N: TB-368 Suggested PCB Layout (PL-230)



### Features

- high rejection
- flat group delay @ passband
- good VSWR, 1.3:1 typ @ passband
- shielded case
- aqueous washable

### Applications

- mobile TV
- receivers / transmitters
- harmonic rejection



CASE STYLE: HF1139  
PRICE: \$15.95 ea. QTY (1-9)

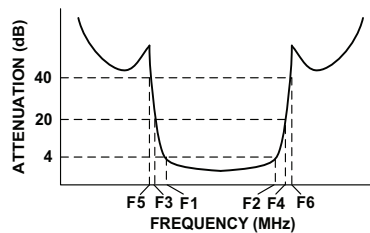
### +RoHS Compliant

The +Suffix identifies RoHS Compliance. See our web site for RoHS Compliance methodologies and qualifications

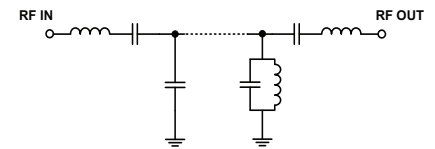
### Bandpass Filter Electrical Specifications (T<sub>AMB</sub> = 25°C)

CENTER FREQ. (MHz)	PASSBAND (MHz) (Loss < 4dB)	STOPBANDS (MHz)				VSWR (:1)		
		Loss > 20dB		Loss > 40dB		Passband		Stopband
F <sub>c</sub>	F <sub>1</sub> - F <sub>2</sub>	F <sub>3</sub>	F <sub>4</sub>	F <sub>5</sub>	F <sub>6</sub>	Typ.	Max.	Typ.
615	565 - 670	380	720	250	740 - 2300	1.3	1.9	20

### Typical Frequency Response

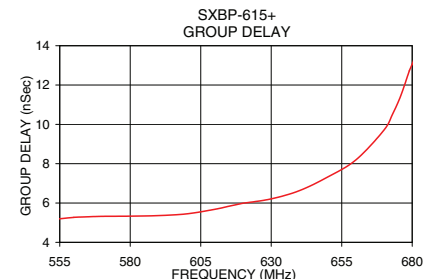
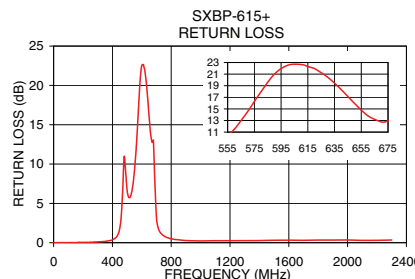


### Functional Schematic



### Typical Performance Data at 25°C

Frequency (MHz)	Insertion Loss (dB)		Return Loss (dB)	Frequency (MHz)	Group Delay (nSec)
	$\bar{x}$	$\sigma$			
0.5	93.98	3.00	0.01	555.0	5.20
250.0	52.72	0.29	0.05	560.0	5.27
380.0	29.65	0.41	0.25	565.0	5.30
430.0	17.34	0.64	0.80	570.0	5.32
450.0	11.22	0.78	1.85	580.0	5.33
470.0	5.30	0.60	6.58	590.0	5.36
565.0	1.43	0.04	12.98	600.0	5.45
580.0	1.30	0.02	17.97	610.0	5.68
615.0	1.42	0.05	22.32	615.0	5.84
640.0	1.74	0.08	18.33	620.0	5.99
670.0	2.58	0.08	12.75	630.0	6.21
690.0	6.56	1.62	7.05	640.0	6.63
700.0	13.84	2.34	3.07	650.0	7.32
710.0	22.42	2.46	1.95	660.0	8.19
720.0	31.31	2.80	1.46	670.0	9.71
740.0	53.80	3.72	1.01	673.0	10.51
1000.0	55.59	0.27	0.23	676.0	11.48
2300.0	56.85	0.49	0.34	680.0	13.06



**Mini-Circuits®**  
ISO 9001 ISO 14001 AS 9100 CERTIFIED  
The Design Engineers Search Engine Provides ACTUAL Data Instantly at [minicircuits.com](http://minicircuits.com)  
IF/RF MICROWAVE COMPONENTS

For detailed performance specs & shopping online see web site

P.O. Box 350166, Brooklyn, New York 11235-0003 (718) 934-4500 Fax (718) 332-4661 The Design Engineers Search Engine Provides ACTUAL Data Instantly at [minicircuits.com](http://minicircuits.com)

Notes: 1. Performance and quality attributes and conditions not expressly stated in this specification sheet are intended to be excluded and do not form a part of this specification sheet. 2. Electrical specifications and performance data contained herein are based on Mini-Circuits' applicable established test performance criteria and measurement instructions. 3. The parts covered by this specification sheet are subject to Mini-Circuits' standard limited warranty and terms and conditions (collectively, "Standard Terms"); Purchasers of this part are entitled to the rights and benefits contained therein. For a full statement of the Standard Terms and the exclusive rights and remedies thereunder, please visit Mini-Circuits' website at [www.minicircuits.com/MCLStore/terms.jsp](http://www.minicircuits.com/MCLStore/terms.jsp).

REV. OR  
M119635  
EDR-9159AUF1  
SXBP-615+  
URJ/RAV  
110817  
Page 1 of 1