

Bandpass Filter

RBP-275+

50Ω 268 to 282 MHz



CASE STYLE: GP731
PRICE: \$13.70 ea. QTY (10)

+RoHS Compliant
The +Suffix identifies RoHS Compliance. See our web site for RoHS Compliance methodologies and qualifications

Reel Size	Available Tape and Reel at no extra cost	Devices/Reel
7"		10, 20, 50, 100, 200
13"		500, 1000

Maximum Ratings

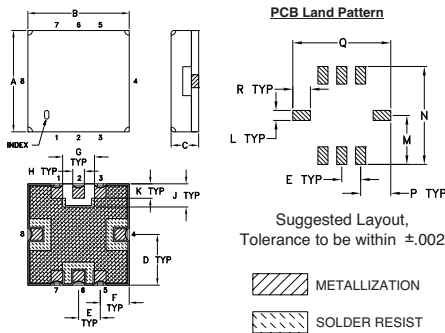
Operating Temperature	-40°C to 85°C
Storage Temperature	-55°C to 100°C
RF Power Input	0.5W at 25°C

Permanent damage may occur if any of these limits are exceeded.

Pin Connections

RF IN	2
RF OUT	6
GROUND	1,3,4,5,7,8

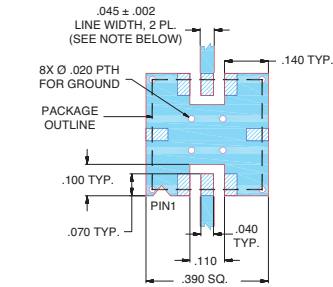
Outline Drawing



Outline Dimensions (inch/mm)

A	B	C	D	E	F	G	H	J
.350	.350	.100	.175	.075	.100	.110	.040	.080
8.89	8.89	2.54	4.45	1.93	2.54	2.79	1.02	2.03
K	L	M	N	P	Q	R	wt	
.050	.040	.195	.390	.120	.390	.070	grams	
1.27	1.02	4.95	9.91	3.05	9.91	1.78		0.25

Demo Board MCL P/N: TB-332 Suggested PCB Layout (PL-176)



NOTES:
1. TRACE WIDTH IS SHOWN FOR FR4 WITH DIELECTRIC THICKNESS .025 ± .002; COPPER: 1/2 OZ. EACH SIDE. FOR OTHER MATERIALS TRACE WIDTH MAY NEED TO BE MODIFIED.
2. BOTTOM SIDE OF THE PCB IS CONTINUOUS GROUND PLANE.
Legend:
Blue DENOTES PCB COPPER LAYOUT WITH SMOBC (SOLDER MASK OVER BARE COPPER)
Red DENOTES COPPER LAND PATTERN FREE OF SOLDER MASK

Features

- linear phase, up to ±8deg typ. @ Fc ±30MHz
- good VSWR, 1.2:1 typ. @ passband
- small size 0.35" x 0.35"
- shielded case
- aqueous washable

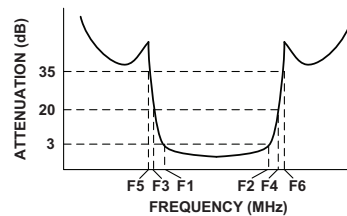
Applications

- harmonic rejection
- transmitters / receivers

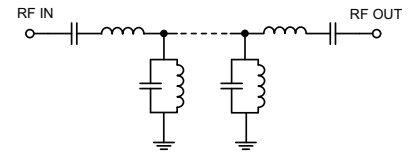
Bandpass Filter Electrical Specifications (T_{AMB} = 25°C)

CENTER FREQ. (MHz)	PASSBAND (MHz) (Loss < 3dB)	STOPBANDS (MHz)				MAXIMUM DEVIATION FROM LINEAR PHASE (deg.)	VSWR (:1)	
		Loss > 20dB	Loss > 35dB	F3	F4		F5	F6
Fc	F1 - F2	F3	F4	F5	F6	Fc ± 30MHz	Max.	Typ.
275	268 - 282	209	350	120	370-1000	±15	1.7	18

Typical Frequency Response

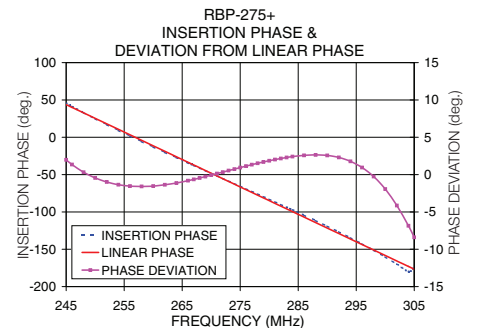
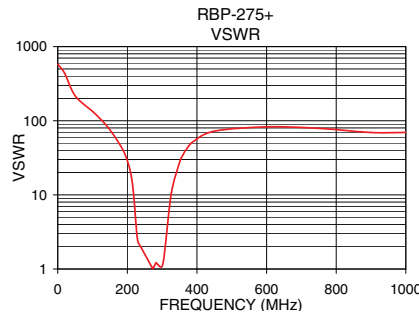
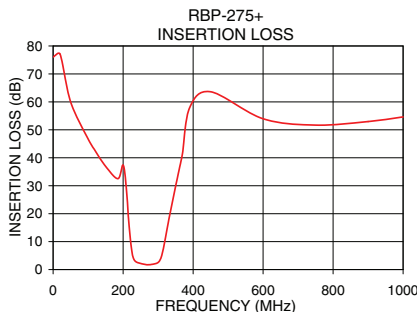


Functional Schematic



Typical Performance Data at 25°C

Frequency (MHz)	Insertion Loss (dB)	VSWR (:1)	Frequency (MHz)	Deviation from Linear Phase (deg.)
0.3	76.04	579.06	245.0	1.98
120.0	42.54	108.58	248.0	0.32
209.0	29.34	20.22	250.0	-0.44
220.0	11.85	7.94	254.0	-1.35
225.0	6.57	3.95	258.0	-1.58
245.0	2.29	1.77	260.0	-1.54
268.0	1.73	1.11	262.0	-1.36
270.0	1.73	1.07	268.0	-0.45
275.0	1.75	1.04	270.0	-0.07
280.0	1.82	1.16	275.0	0.94
282.0	1.85	1.21	280.0	1.86
305.0	3.31	1.38	282.0	2.16
320.0	10.72	6.32	286.0	2.58
330.0	17.48	12.99	290.0	2.57
350.0	29.80	27.59	294.0	1.78
370.0	41.72	41.37	296.0	0.95
450.0	63.62	72.39	300.0	-1.94
1000.0	54.60	69.49	305.0	-8.40



Mini-Circuits
ISO 9001 ISO 14001 AS 9100 CERTIFIED
P.O. Box 350166, Brooklyn, New York 11235-0003 (718) 934-4500 Fax (718) 332-4661 The Design Engineers Search Engine Provides ACTUAL Data Instantly at minicircuits.com
I/F/R/ MICROWAVE COMPONENTS

For detailed performance specs & shopping online see web site

P.O. Box 350166, Brooklyn, New York 11235-0003 (718) 934-4500 Fax (718) 332-4661 The Design Engineers Search Engine Provides ACTUAL Data Instantly at minicircuits.com

Notes: 1. Performance and quality attributes and conditions not expressly stated in this specification sheet are intended to be excluded and do not form a part of this specification sheet. 2. Electrical specifications and performance data contained herein are based on Mini-Circuit's applicable established test performance criteria and measurement instructions. 3. The parts covered by this specification sheet are subject to Mini-Circuits standard limited warranty and terms and conditions (collectively, "Standard Terms"); Purchasers of this part are entitled to the rights and benefits contained therein. For a full statement of the Standard Terms and the exclusive rights and remedies thereunder, please visit Mini-Circuits' website at www.minicircuits.com/MCLStore/terms.jsp.