

Bandpass Filter

BPF-A75+

50Ω 72 to 78 MHz



CASE STYLE: HQ1157
PRICE: \$29.95 ea. QTY (1-9)

Maximum Ratings

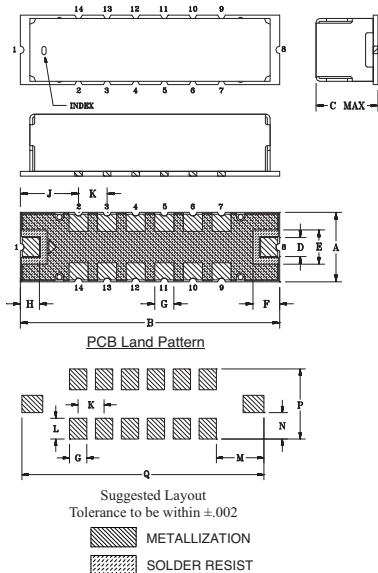
Operating Temperature	-40°C to 85°C
Storage Temperature	-55°C to 100°C
RF Power Input*	0.5W at 25°C

*Passband rating, derate linearly to 0.25W at 100°C ambient. Permanent damage may occur if any of these limits are exceeded.

Pin Connections

RF IN	1
RF OUT	8
GROUND	2,3,4,5,6,7,9,10,11,12,13,14

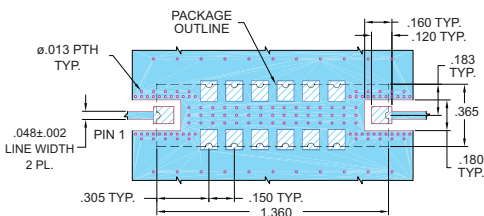
Outline Drawing



Outline Dimensions (inch/mm)

A	B	C	D	E	F	G	H
.365	1.360	.35	.100	.180	.140	.100	.100
9.27	34.54	8.89	2.54	4.57	3.58	2.54	2.54
J	K	L	M	N	P	Q	wt.
.305	.150	.120	.275	.152	.405	1.400	grams
7.75	3.81	3.05	6.99	3.87	10.29	35.65	4.0

Demo Board MCL P/N: TB-363+
Suggested PCB Layout (PL-227)



NOTES:

- TRACE WIDTH IS SHOWN FOR FR4 WITH DIELECTRIC THICKNESS: .025" ± .002". COPPER: 1/2 OZ. EACH SIDE. FOR OTHER MATERIALS TRACE WIDTH MAY NEED TO BE MODIFIED.
 - BOTTOM SIDE OF THE PCB IS CONTINUOUS GROUND PLANE.
- Denotes PCB COPPER LAYOUT WITH SMOBC (SOLDER MASK OVER BARE COPPER)
 - Denotes COPPER LAND PATTERN FREE OF SOLDER MASK

Features

- High rejection
- Good VSWR, 1.2:1 typ @ passband
- Shielded case
- Aqueous washable

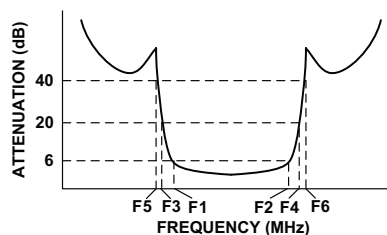
Applications

- Military communications
- Harmonic rejection
- Transmitters/receivers

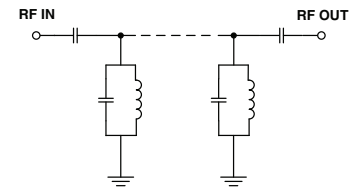
Bandpass Filter Electrical Specifications (T_{AMB} = 25°C)

CENTER FREQ. (MHz)	PASSBAND (MHz) (Loss < 6dB)	STOPBANDS (MHz)				VSWR (:1)		
		Loss > 20dB		Loss > 40dB		Passband		Stopband
F _c	F ₁ - F ₂	F ₃	F ₄	F ₅	F ₆	Typ.	Max.	Typ.
75	72 - 78	65	88	62	95 - 750	1.2	1.6	20

Typical Frequency Response

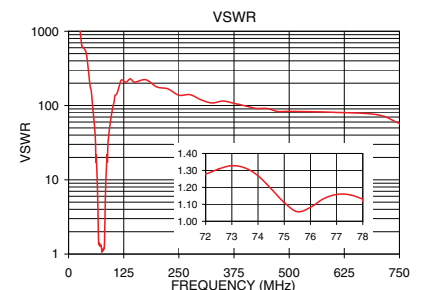
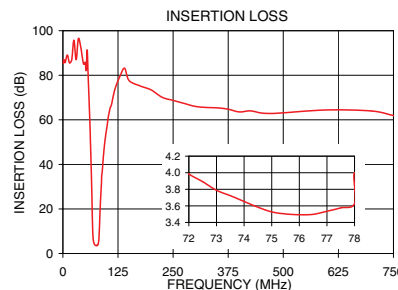


Functional Schematic



Typical Performance Data at 25°C

Frequency (MHz)	Insertion Loss (dB)	VSWR (:1)
1	85.28	15791.02
30	87.00	643.78
62	54.00	17.39
65	31.77	9.42
67	14.81	2.76
68	8.71	1.46
72	3.98	1.28
73	3.79	1.33
75	3.53	1.11
76	3.49	1.08
78	3.63	1.13
82	7.61	2.11
84	17.18	7.70
88	35.00	17.39
95	49.71	61.14
101	58.45	99.98
400	63.54	99.13
750	61.94	57.39



For detailed performance specs & shopping online see web site

P.O. Box 350166, Brooklyn, New York 11235-0003 (718) 934-4500 Fax (718) 332-4661 The Design Engineers Search Engine Provides ACTUAL Data Instantly at minicircuits.com

Notes: 1. Performance and quality attributes and conditions not expressly stated in this specification sheet are intended to be excluded and do not form a part of this specification sheet. 2. Electrical specifications and performance data contained herein are based on Mini-Circuit's applicable established test performance criteria and measurement instructions. 3. The parts covered by this specification sheet are subject to Mini-Circuit's standard limited warranty and terms and conditions (collectively, "Standard Terms"); Purchasers of this part are entitled to the rights and benefits contained therein. For a full statement of the Standard Terms and the exclusive rights and remedies thereunder, please visit Mini-Circuit's website at www.minicircuits.com/MCLStore/terms.jsp.

REV. OR
M117937
EDR-8917/1AUF1
BPF-A75+
URJ/RAV
121011
Page 1 of 1