

Coaxial Bi-Directional Coupler

ZFBDC20-970HP

50Ω Up to 10W 860 to 970 MHz



Maximum Ratings

Operating Temperature	-55°C to 100°C
Storage Temperature	-55°C to 100°C

Permanent damage may occur if any of these limits are exceeded.

Coaxial Connections

INPUT	2
OUTPUT	3
COUPLED (forward)	1
COUPLED (reverse)	S

Features

- very low mainline loss, 0.1 dB typ.
- excellent directivity, 28 dB typ.
- excellent VSWR, 1.1: typ.
- high power operation, 10W

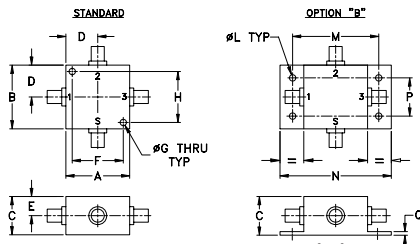
Applications

- VSWR measurement
- power monitoring of cellular transmitters
- power levelling

CASE STYLE: J17

Connectors	Model	Price	Qty.
SMA	ZFBDC20-970HP	\$79.95	(1-9)
BRACKET (OPTION "B")		\$5.00	(1+)

Outline Drawing



Outline Dimensions (inch/mm)

A	B	C	D	E	F	G
1.25	1.25	.75	.63	.38	1.000	.125
31.75	31.75	19.05	16.00	9.65	25.40	3.18

J	K	L	M	N	P	Q	wt
--	--	.125	1.688	2.18	.75	.07	grams
--	--	3.18	42.88	55.37	19.05	1.78	75.0

For option B with N-Type connectors, dimension "C" increases to 0.94 inches.

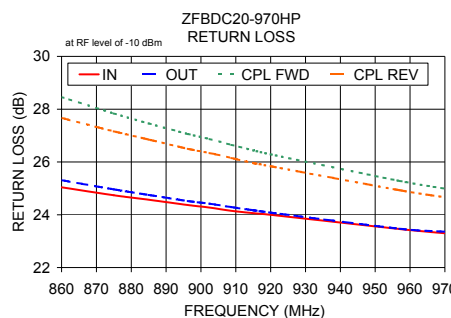
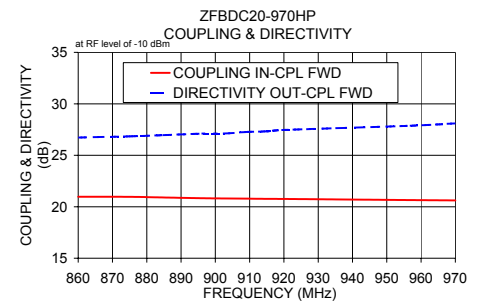
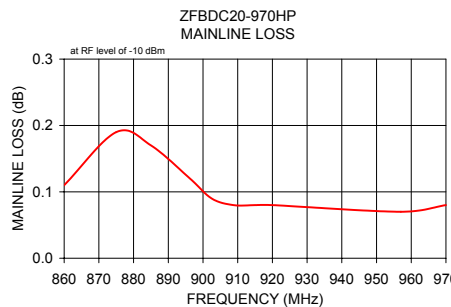
Bi-Directional Coupler Electrical Specifications

FREQ. (MHz)	COUPLING (dB)		MAINLINE LOSS ¹ (dB)		DIRECTIVITY (dB)		VSWR (:1)	POWER INPUT (W)	
	Nom.	Flatness	Typ.	Max.	Typ.	Min.		Typ.	L Max.
f _L -f _H									
860-970	20.4±0.6	±0.6	0.1	0.4	28	20	1.1	10	10

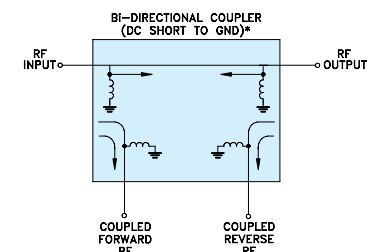
1. Mainline loss includes theoretical power loss at coupled port.

Typical Performance Data

Frequency (MHz)	Mainline Loss (dB)		Coupling (dB)		Directivity (dB)		Return Loss (dB)			
	In-Out	In-Cpl Fwd	In-Cpl Rev	Out-Cpl Rev	Out-Cpl Fwd	In-Cpl Rev	In	Out	Cpl Fwd	Cpl Rev
860.00	0.11	20.97	21.06	21.06	26.72	22.08	25.04	25.31	28.46	27.67
875.00	0.19	20.96	21.06	21.06	26.84	21.99	24.74	24.96	27.84	27.16
885.00	0.17	20.90	21.01	21.01	26.96	21.92	24.57	24.75	27.46	26.85
896.25	0.12	20.83	20.95	20.95	27.11	21.92	24.37	24.52	27.06	26.50
902.50	0.09	20.81	20.93	20.93	27.12	21.84	24.27	24.42	26.87	26.34
908.75	0.08	20.79	20.90	20.90	27.26	21.83	24.15	24.29	26.65	26.15
915.00	0.08	20.77	20.89	20.89	27.33	21.78	24.06	24.17	26.44	25.96
920.00	0.08	20.76	20.87	20.87	27.46	21.77	24.00	24.08	26.29	25.84
957.00	0.07	20.65	20.76	20.76	27.87	21.87	23.46	23.47	25.28	24.93
970.00	0.08	20.62	20.73	20.73	28.10	21.55	23.30	23.36	24.99	24.66



Electrical Schematic



* ELECTRICAL SCHEMATIC IS FOR BI-DIRECTIONAL COUPLER WITH INTERNAL TRANSFORMER(S) THAT ROUTES DC FROM RF PORTS TO GROUND.

Notes

- Performance and quality attributes and conditions not expressly stated in this specification document are intended to be excluded and do not form a part of this specification document.
- Electrical specifications and performance data contained in this specification document are based on Mini-Circuit's applicable established test performance criteria and measurement instructions.
- The parts covered by this specification document are subject to Mini-Circuit's standard limited warranty and terms and conditions (collectively, "Standard Terms"); Purchasers of this part are entitled to the rights and benefits contained therein. For a full statement of the Standard Terms and the exclusive rights and remedies thereunder, please visit Mini-Circuit's website at www.minicircuits.com/WCLStore/terms.jsp

