

Coaxial High Power Amplifier

ZHL-900A-10W+

50Ω 10W 480 to 900 MHz

Features

- High power, 10 Watt
- Excellent gain flatness, ±0.7 dB
- Excellent IN/OUT matching, 20dB return loss
- High power output, +40 dBm
- High IP3, +50 dBm
- Class A amplifier
- Over-voltage protection, shuts off above 29V
- Protected against overheat, shuts off automatically
- No damage with an open or short output load under full CW output power¹

Applications

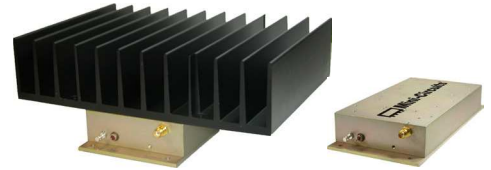
- UHF
- Cellular
- Instrumentation
- Laboratory use

Electrical Specifications

Parameter	ZHL-900A-10W+			ZHL-900A-10X+▲			Units
	Min.	Typ.	Max.	Min.	Typ.	Max.	
Frequency Range	480		900	480		900	MHz
Gain	24	26	30	24	26	30	dB
Gain Flatness			±1.0			±1.0	dB
Output Power at 1dB compression	+39			+39			dBm
Saturated Output Power at 3dB compression	+41			+41			dBm
Noise Figure		10.0			10.0		dB
Output third order intercept point		+50			+50		dBm
Input VSWR		1.3			1.3		:1
Output VSWR		1.3			1.3		:1
DC Supply Voltage		24			24		V
Supply Current		2.5	3.5		2.5	3.5	A

1. At constant open or short load 24V nominal supply voltage

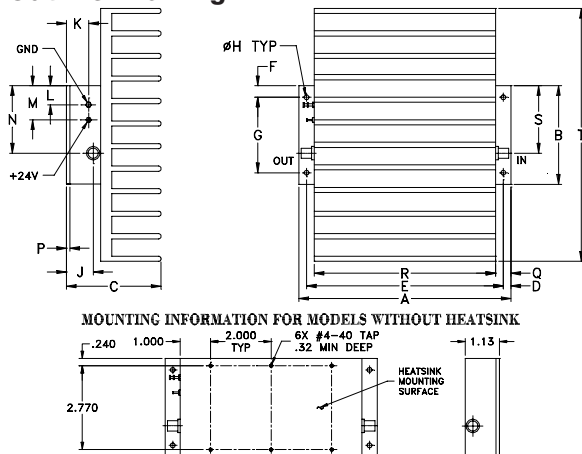
▲ Heat sink not included. Alternative heat sinking and heat removal must be provided by the user to limit maximum base-plate temperature to 65°C, in order to ensure proper performance. For reference, this requires thermal resistance of user's external heat sink to be 0.25°C/W max.



Model No.	ZHL-900A-10W+	ZHL-900A-10WX+▲
Case Style	DDD338	
Connectors	SMA	
Price (Qty.)	\$1495.00 ea. (1-9)	\$1470.00 ea. (1-9)

+RoHS Compliant
The +Suffix identifies RoHS Compliance. See our web site for RoHS Compliance methodologies and qualifications

Outline Drawing



Outline Dimensions (inch/mm)

A	B	C	D	E	F	G	H	J	K	L	M	N	P	Q	R	S	T	wt
7.00	3.25	3.13	.25	6.500	.38	2.500	.156	.88	.73	.62	1.13	2.23	.125	.50	6.00	2.23	8.35	grams*
177.80	82.55	79.50	6.35	165.10	9.65	63.50	3.96	22.35	18.54	15.75	28.70	56.64	3.18	12.70	152.40	56.64	212.09	1780

*510 grams without heatsink

Maximum Ratings

Parameter	Ratings
Operating Temperature	-20°C to 85°C
Storage Temperature	-55°C to 100°C
Base Plate Temperature	65°C
DC Voltage	+25V
Input RF Power ² (no damage)	+25 dBm

2. At nominal output load, 24V nominal supply voltage.

Permanent damage may occur if any of these limits are exceeded.



P.O. Box 350166, Brooklyn, New York 11235-0003 (718) 934-4500 Fax (718) 332-4661 The Design Engineers Search Engine Provides ACTUAL Data Instantly at minicircuits.com

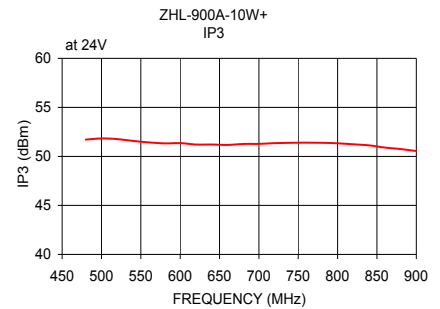
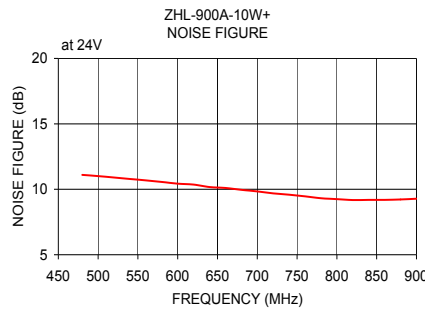
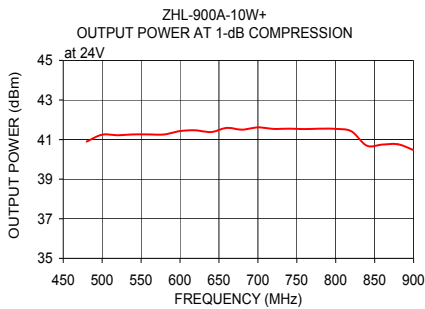
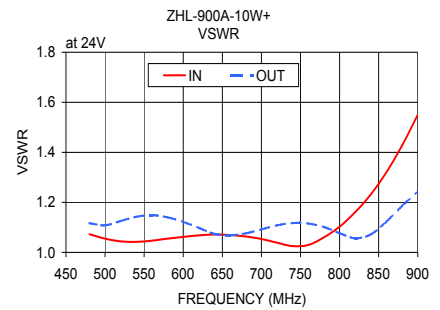
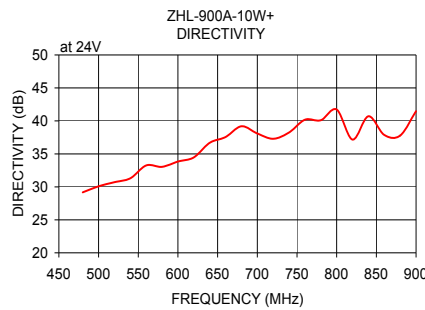
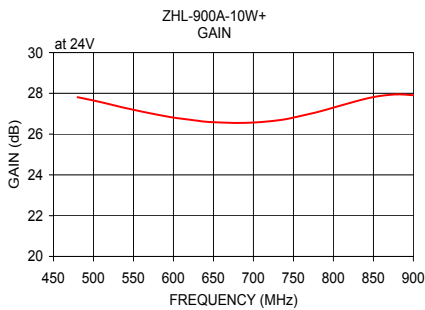
IFIRF MICROWAVE COMPONENTS

Notes: 1. Performance and quality attributes and conditions not expressly stated in this specification sheet are intended to be excluded and do not form a part of this specification sheet. 2. Electrical specifications and performance data contained herein are based on Mini-Circuit's applicable established test performance criteria and measurement instructions. 3. The parts covered by this specification sheet are subject to Mini-Circuits standard limited warranty and terms and conditions (collectively, "Standard Terms"); Purchasers of this part are entitled to the rights and benefits contained therein. For a full statement of the Standard Terms and the exclusive rights and remedies thereunder, please visit Mini-Circuits' website at www.minicircuits.com/MCLStore/terms.jsp.

For detailed performance specs & shopping online see web site

REV. C
M137732
ZHL-900A-10W+
ED-13362/5
MM/CP
120621
Page 1 of 2

FREQUENCY (MHz)	GAIN (dB)	DIRECTIVITY (dB)	VSWR (:1)		NOISE FIGURE (dB)	POUT at 1 dB COMPR. (dBm)	OUTPUT IP3 (dBm)
	24V	24V	IN	OUT		24V	24V
480.00	27.81	29.17	1.07	1.12	11.10	40.90	51.71
500.00	27.65	30.08	1.05	1.11	11.01	41.25	51.83
520.00	27.47	30.71	1.04	1.13	10.90	41.22	51.76
540.00	27.28	31.30	1.04	1.14	10.79	41.26	51.58
560.00	27.11	33.25	1.05	1.15	10.68	41.26	51.43
580.00	26.95	33.03	1.06	1.14	10.56	41.26	51.33
600.00	26.81	33.84	1.06	1.12	10.43	41.43	51.35
620.00	26.71	34.47	1.07	1.10	10.36	41.47	51.21
640.00	26.61	36.68	1.07	1.07	10.17	41.38	51.21
660.00	26.57	37.56	1.07	1.07	10.10	41.59	51.17
680.00	26.55	39.19	1.06	1.08	9.96	41.50	51.27
700.00	26.57	38.09	1.05	1.09	9.84	41.62	51.28
720.00	26.63	37.29	1.04	1.11	9.69	41.54	51.35
740.00	26.73	38.24	1.02	1.12	9.59	41.55	51.39
760.00	26.90	40.18	1.03	1.12	9.46	41.53	51.40
780.00	27.08	40.10	1.06	1.10	9.32	41.55	51.39
800.00	27.30	41.73	1.10	1.08	9.25	41.54	51.34
820.00	27.52	37.16	1.16	1.06	9.18	41.42	51.24
840.00	27.73	40.71	1.23	1.07	9.19	40.69	51.13
860.00	27.88	37.87	1.32	1.12	9.19	40.75	50.90
880.00	27.95	37.78	1.43	1.19	9.22	40.76	50.75
900.00	27.91	41.47	1.55	1.25	9.28	40.47	50.55



For detailed performance specs & shopping online see web site

P.O. Box 350166, Brooklyn, New York 11235-0003 (718) 934-4500 Fax (718) 332-4661 The Design Engineers Search Engine Provides ACTUAL Data Instantly at minicircuits.com

IFIRF MICROWAVE COMPONENTS

Notes: 1. Performance and quality attributes and conditions not expressly stated in this specification sheet are intended to be excluded and do not form a part of this specification sheet. 2. Electrical specifications and performance data contained herein are based on Mini-Circuit's applicable established test performance criteria and measurement instructions. 3. The parts covered by this specification sheet are subject to Mini-Circuits standard limited warranty and terms and conditions (collectively, "Standard Terms"); Purchasers of this part are entitled to the rights and benefits contained therein. For a full statement of the Standard Terms and the exclusive rights and remedies thereunder, please visit Mini-Circuits' website at www.minicircuits.com/MCLStore/terms.jsp.