

Coaxial

Low Noise Amplifier

ZX60-542LN+

50Ω

4400 to 5400 MHz

Features

- low noise figure, 1.9 dB typ.
- output power, up to 10 dBm typ.
- reverse polarity protection

Applications

- front-end amplifier
- Satellite TV
- public safety
- astronomy
- weather
- defense & radar
- instrumentation
- test equipment



CASE STYLE: GA955

Connectors	Model	Price	Qty.
SMA	ZX60-542LN-S+	\$129.95 ea.	(1-9)

+ RoHS compliant in accordance with EU Directive (2002/95/EC)

The +Suffix has been added in order to identify RoHS Compliance. See our web site for RoHS Compliance methodologies and qualifications.

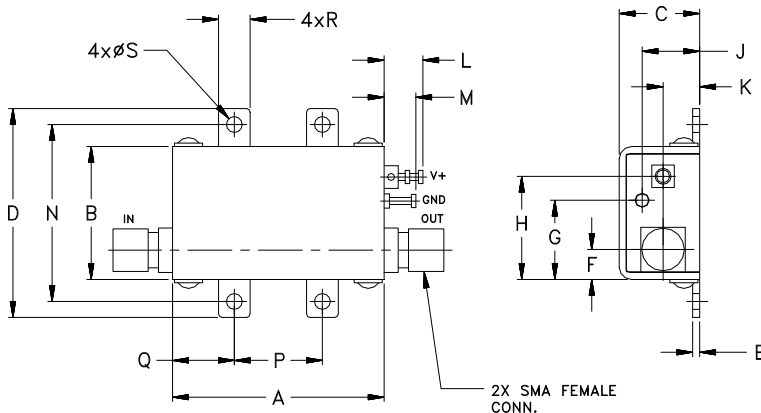
Electrical Specifications $T_{AMB}=25^{\circ}\text{C}$

MODEL NO.	FREQUENCY (MHz)	DC VOLTS (V)	NOISE FIGURE (dB)		GAIN (dB)				MAXIMUM POWER (dBm)			3rd ORDER INTERCEPT POINT AT OUTPUT (dBm)	VSWR (:1) Typ.		DC OPERATING CURRENT @ Pin V+ (mA)	
			Typ.	Max.	Typ.	Min.	Typ.	Max.	Typ.	Min.	Input (no damage)		Typ.	In	Out	Typ.
ZX60-542LN+	4400-5400	12.0	1.9	3.0	24	22	±0.3	±0.8	10	8	+13	23	1.5	1.5	60	80

Maximum Ratings

Operating Temperature	-40°C to 85°C case
Storage Temperature	-55°C to 100°C
DC Voltage	+13V
Power	0.96W

Outline Drawing



Outline Dimensions (inch/mm)

A	B	C	D	E	F	G	H	J	K	L	M	N	P	Q	R	S	wt
1.20	.75	.46	1.18	.04	.17	.45	.59	.33	.21	.22	.18	1.00	.50	.35	.18	.09	grams
30.48	19.05	11.68	29.97	1.02	4.32	11.43	14.99	8.38	5.33	5.59	4.57	25.40	12.70	8.89	4.57	2.29	35.00



For detailed performance specs & shopping online see web site

P.O. Box 350166, Brooklyn, New York 11235-0003 (718) 934-4500 Fax (718) 332-4661 The Design Engineers Search Engine Provides ACTUAL Data Instantly at minicircuits.com

IF/RF MICROWAVE COMPONENTS

Notes: 1. Performance and quality attributes and conditions not expressly stated in this specification sheet are intended to be excluded and do not form a part of this specification sheet. 2. Electrical specifications and performance data contained herein are based on Mini-Circuits' applicable established test performance criteria and measurement instructions. 3. The parts covered by this specification sheet are subject to Mini-Circuits standard limited warranty and terms and conditions (collectively, "Standard Terms"); Purchasers of this part are entitled to the rights and benefits contained therein. For a full statement of the Standard Terms and the available rights and remedies therefor, please visit Mini-Circuits' website at www.minicircuits.com/ACF/StandardTerms.asp

Typical Performance Data/Curves at 25°C

ZX60-542LN+

FREQUENCY (MHz)	GAIN (dB)	DIRECTIVITY (dB)	VSWR IN (:1)	VSWR OUT (:1)	NOISE FIGURE (dB)	POUT at 1dB COMPR. (dBm)	IP3 (dBm)
4400.0	24.83	34.58	1.68	1.57	1.81	9.80	22.57
4500.0	24.80	35.55	1.56	1.52	1.80	9.72	23.78
4600.0	24.78	31.78	1.44	1.46	1.79	9.68	23.55
4700.0	24.75	32.27	1.34	1.39	1.79	10.02	23.62
4800.0	24.68	40.43	1.24	1.33	1.83	9.99	23.45
4900.0	24.57	37.39	1.14	1.27	1.81	9.76	23.61
5000.0	24.43	35.91	1.06	1.25	1.86	9.73	23.48
5100.0	24.35	31.03	1.05	1.30	1.91	9.98	23.61
5200.0	24.35	41.27	1.15	1.37	1.96	10.43	23.73
5300.0	24.30	33.52	1.26	1.42	2.02	10.70	24.21
5400.0	24.20	34.70	1.40	1.48	2.08	10.66	23.93

