

High IP3

Low Noise Amplifier

ZHL-1010-75

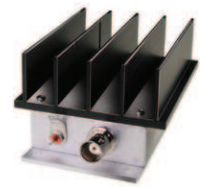
75Ω Medium High Power 50 to 1000 MHz

Features

- wideband, 50 to 1000 MHz
- low noise, 3.5 dB typ.
- high IP3, +47 dBm typ.
- very high IP2, 68-83 dBm typ.

Applications

- VHF/UHF
- CATV
- cellular
- instrumentation



CASE STYLE: S32

| Connectors | Model | Price | Qty. |
|------------|-------------|----------|-------|
| BNC | ZHL-1010-75 | \$149.95 | (1-9) |

Electrical Specifications

| MODEL NO. | FREQ. (MHz) | | GAIN (dB) | | MAXIMUM POWER OUTPUT (dBm) | | DYNAMIC RANGE | | VSWR (-1) Max. | | DC POWER | |
|-------------|-------------|-------|-----------|---------------|----------------------------|-------------------|---------------|----------------|----------------|-----|---------------|------------------|
| | f_L | f_U | Min. | Flatness Max. | (1 dB Compr.) Min. | Input (no damage) | NF (dB) Typ. | IP3 (dBm) Typ. | In | Out | Volt (V) Nom. | Current (A) Max. |
| ZHL-1010-75 | 50 | 1000 | 9.5 | ±0.7 | +26 | +20 | 3.5 | +47 | 1.5 | 1.5 | 12 | 0.525 |

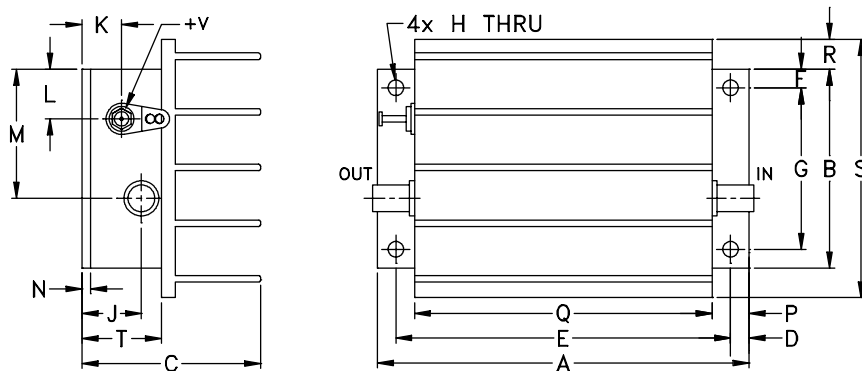
Open load is not recommended, potentially can cause damage.
With no load derate max input power by 20 dB

Maximum Ratings

| | |
|-----------------------|----------------|
| Operating Temperature | -20°C to 65°C |
| Storage Temperature | -55°C to 100°C |
| DC Voltage | +13V Max. |

Permanent damage may occur if any of these limits are exceeded.

Outline Drawing



Outline Dimensions (inch / mm)

| A | B | C | D | E | F | G | H | J | K | L | M | N | P | Q | R | S | T | wt |
|-------|-------|-------|------|-------|------|-------|------|-------|-------|-------|-------|------|------|-------|------|-------|-------|-------|
| 3.75 | 2.00 | 1.80 | .19 | 3.375 | .19 | 1.625 | .144 | .50 | .40 | .50 | 1.30 | .10 | .38 | 3.00 | .30 | 2.60 | .80 | grams |
| 95.25 | 50.80 | 45.72 | 4.83 | 85.73 | 4.83 | 41.28 | 3.66 | 12.70 | 10.16 | 12.70 | 33.02 | 2.54 | 9.65 | 76.20 | 7.62 | 66.04 | 20.32 | 220.0 |



For detailed performance specs & shopping online see web site

P.O. Box 350166, Brooklyn, New York 11235-0003 (718) 934-4500 Fax (718) 332-4661 The Design Engineers Search Engine Provides ACTUAL Data Instantly at minicircuits.com

IF/RF MICROWAVE COMPONENTS

Notes: 1. Performance and quality attributes and conditions not expressly stated in this specification sheet are intended to be excluded and do not form a part of this specification sheet. 2. Electrical specifications and performance data contained herein are based on Mini-Circuit's applicable established test performance criteria and measurement instructions. 3. The parts covered by this specification sheet are subject to Mini-Circuits standard limited warranty and terms and conditions (collectively, "Standard Terms"); Purchasers of this part are entitled to the rights and benefits contained therein. For a full statement of the Standard Terms and the exclusive rights and remedies thereunder, please visit Mini-Circuits' website at www.minicircuits.com/MCLStore/terms.jsp.

REV. OR
M98142
ZHL-1010-75
090819
Page 1 of 2

| FREQUENCY (MHz) | GAIN (dB) | VSWR (:1) | |
|--------------------|--------------|--------------|------|
| | | IN | OUT |
| | 12V | | |
| 50.00 | 11.44 | 1.19 | 1.14 |
| 164.00 | 11.44 | 1.08 | 1.05 |
| 240.00 | 11.40 | 1.07 | 1.07 |
| 354.00 | 11.34 | 1.11 | 1.11 |
| 468.00 | 11.28 | 1.11 | 1.12 |
| 544.00 | 11.21 | 1.10 | 1.09 |
| 658.00 | 11.15 | 1.07 | 1.03 |
| 772.00 | 11.04 | 1.12 | 1.11 |
| 848.00 | 10.94 | 1.18 | 1.11 |
| 962.00 | 10.88 | 1.12 | 1.06 |
| 1000.00 | 10.89 | 1.08 | 1.16 |

