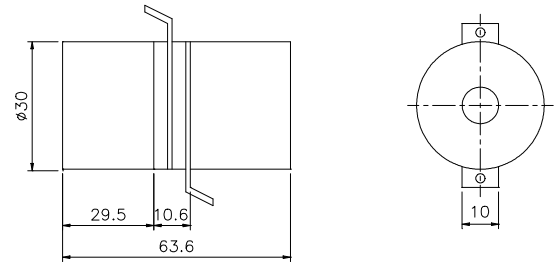


# Bolt Clamped High Power Transducers



## Dimensions

### Model: 30402S



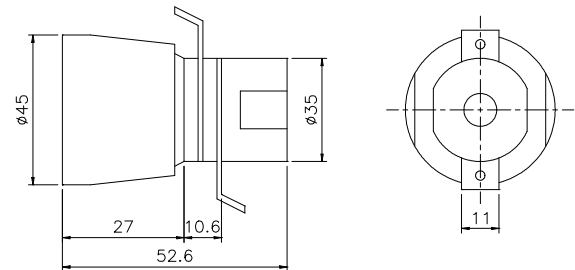
## Features

- High efficiency & high output
- Large amplitude
- Low heat generation
- Durability & stability
- Easy connection

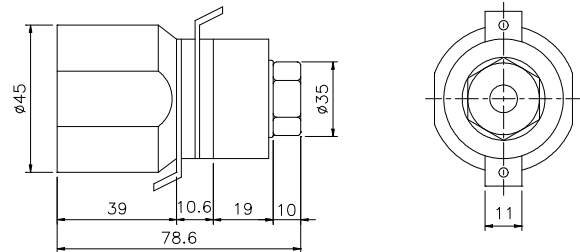
## Applications

- Ultrasonic cleaners
- Ultrasonic welders
- Ultrasonic processing machines: bonding, drilling, etching, engraving and etc.

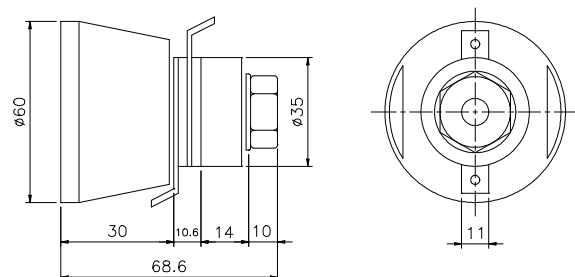
### Model: 45402H



### Model: 45282H



### Model: 60282H



## Specification

	30402S	45402H	45282H	60282H
Resonant frequency (KHz)	37.5	40.0	28.2	28
Motion Admittance (mMho)	35	15	50	40
Mechanic Q (Qm)	500	500	500	500
Capacitance (pF)	2700	4000	4000	4000
Allowable vibration rate (cm/sec.)	50	50	50	25

All specification taken typical at 25°C