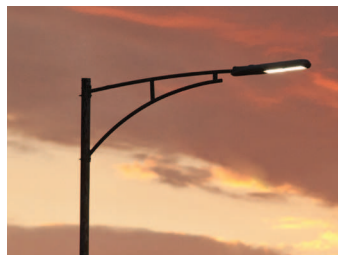








Prepared By	Catalog #	
Project	Comments	Date



PROLIFIC™ LSR3 & LSR4 Roadway

Features¹

Wattage	100W, 150W
Lumen Output Range	9,285–13,890
Color Temperature (Cct)	4000K, 5000K
Color Rendering Index (Cri)	70 (4000k) and 65 (5000k)
Rated Life L70	>100,000 hrs @ 25°C > 85,000 hrs @ 40°C
Housing	Die Cast and Extruded Aluminum
Finish	Grey, Black, Bronze Powder Coat
Optical Distributions	Type II, Type III, Type IV Type II Streetside Optimized, Type III Streetside Optimized, Type V
Mounting Options	Fits standard 1-¼" to 2" Mast Arm; 38 - 61mm, 4-bolt Internal
Dimensions	37.3"L x 8.0"W x 3.8"H 947.42mm x 203mm x 96.52mm
EPA (Sq. Ft.)	1.0
Weight	25lbs
Driver Voltage	120-277 VAC @ 50-60 Hz,
Operating Temperature	-40°C to +50°C (-40°F to +122°F)
Power Factor (PF)	≥0.9
Total Harmonic Distortion (THD)	<20%
Off State Power	0
Warranty	5 Year Limited
Certifications	     

Environment	 
-------------	---

Benefits

- Sustainable Design:
- Custom arrayed optics to reduce the use of plastics.
- No tertiary optical losses.
- Use of recycled and recyclable corrosion resistant materials.
- Full cutoff optics meet Dark Sky requirements
- Holistic Thermal Design:
- Underdriving LEDs to improve efficiency and system life.
- Use of premium grade alloys for enhanced thermal conduction.
- Electronics are isolated and sealed from the optical chamber.
- Fits standard 1 ¼" to 2" mast arm.

Typical Applications Include:

- Roadways
- City Streets
- Campuses
- Residential Streets
- Parking Lots

¹Consult www.lsgc.com for 5000K IES and LM-79 report
²4-bolt mounting required for 3G vibration rating

LSR3 & LSR4

PRODUCT ORDERING INFORMATION

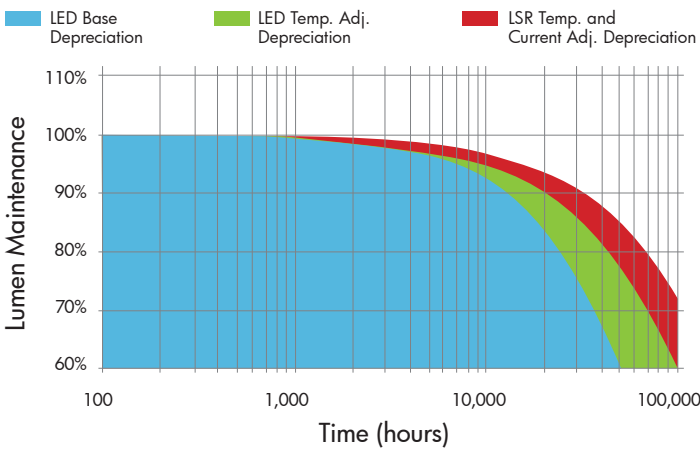
EXAMPLE: LSR3 NW R2 MVOLT 2B PCR PC HS GR

Family	Color Temp.	Optical Distribution	Voltage	Mounting	Receptacle	Options	Accessories	Finish
LSR3 100W	NW White 4000K	R2 Type II	MVOLT Multi-Volt	2B 2-bolt (standard)	PCR Photocontrol Receptacle (standard)	PC Twist-lock Photocontrol	HS House Side	GR Grey (standard)
LSR4 150W	CW White 5000K	R3 Type III	480 480 Volt	4B 4-bolt Internal ¹	NR No Photocontrol Receptacle	SH Shorting Cap		BLK Black
		R2SS Type II Streetside Optimized						BZ Bronze
		R3SS Type III Streetside Optimized						
		R4 Type IV						
		R5 Type V						

LSR3 & LSR4 Performance Specifications²

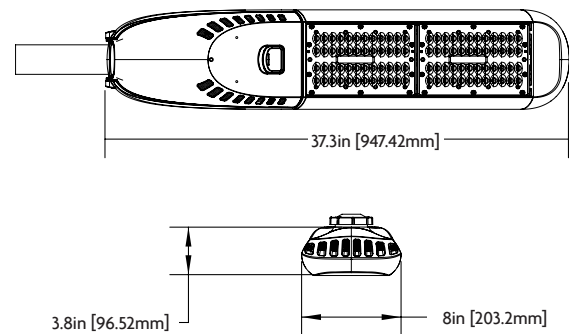
Performance Package	Optic	IES BUG Rating			Input Watts	4000K CCT				Total Current @ 120V	Total Current @ 240V	Total Current @ 277V	L70 Life (hrs)	
		B	U	G		Delivered Lumens	Efficacy (LPW)	CRI	Power Factor				@ 25°	@ 40°
LSR3	R2	2	1	2	100W	9206	93	70	≥ 0.9	0.82	0.42	0.39	> 100K	> 85K
	R2SS	2	2	2		9006	90			0.82	0.42	0.39		
	R3	2	1	2		9145	94			0.82	0.42	0.39		
	R3SS	2	2	2		9579	96			0.82	0.42	0.39		
	R4	2	1	2		9440	95			0.82	0.42	0.39		
	R5	3	1	1		9477	98			0.82	0.42	0.39		
LSR4	R2	3	1	3	150W	12800	85	70	≥ 0.9	1.24	0.63	0.56	> 100K	> 85K
	R2SS	2	2	2		12416	83			1.24	0.63	0.56		
	R3	3	1	2		13430	84			1.24	0.63	0.56		
	R3SS	2	2	2		13230	85			1.24	0.63	0.56		
	R4	3	1	2		13934	93			1.24	0.63	0.56		
	R5	3	1	1		13230	88			1.24	0.63	0.56		

Lumen Maintenance Projections



LSR lumen maintenance projections are based on 100% system operation at a 25°C ambient temperature. Lumen maintenance projections are based on mfg. LM80 performance and drive current and in situ temperature measurements.

Dimensions



All mounting hardware included with each unit.
¹ Required for 3G vibration rating
² Consult www.lsgc.com for 5000K IES and LM-79 report

