

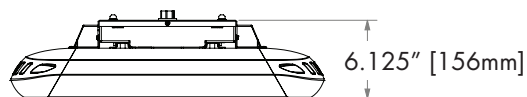
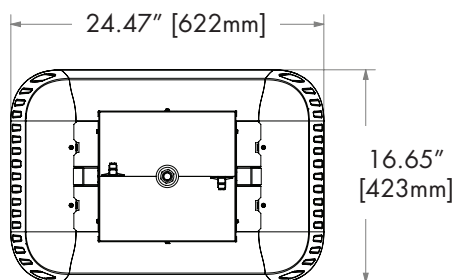
Prepared By	Catalog #	
Project	Comments	Date



FEATURES & BENEFITS






- Up to 35% more efficient than comparable 400w metal halide systems
- Instant on and instant restrike
- Highly consistent light output over entire ambient temperature range
- Reduced maintenance- 3-5x longer life than fluorescent or HID systems
- Pendant, cable or hook mounting
- Field replaceable driver
- RoHS compliant

DIMENSIONS



BAYLIGHT

Breaking LED light output barriers for industrial applications, the Baylight is ideal for cold storage and other complex environment applications.

FEATURES	IHB1	IHB2
Lumen Output (at operating temperature)	18,000	24,000
Input Power (Watts)	200	300
Efficacy (lm/w)	90	80
Color Temperature (CCT)	4000K, 5000K	
Color Rendering Index (CRI)	70	
Rated Life	> 100,000 Hours @ 25°C	
L70	> 60,000 Hours @ 40°C	
Housing	Die Cast and Extruded Aluminum, heavy-gauge cold rolled steel	
Finish	Powder Coated	
Optical Distribution	Type V Wide Distribution	
Mounting Options	Pendant, Hook Cable	
Dimensions	24.47" x 16.65" x 6.125" 622mm x 423mm x 156mm	
Operating Temperature	-40°C to +40°C (-40°F to +104°F)	
Voltage	120-277 VAC @ 50-60 Hz	
Weight	IHB1, IHB2: 38lbs	
Rated Power Factor	>0.9	
Off State Power	Zero	
Warranty	5 Year Limited	
Certification	   	
Environment		

¹All values are nominal

BAYLIGHT

ORDERING INFORMATION \ IHB2 NW MVOLT PND GR

Product	Color Temp.	Optical Distribution	Voltage	Mounting	Finish	Options
IHB1 BayLight (200W)	NW White 4000K	W Wide	MVOLT Multi-Volt	PND Pendant Mount	GR Gray	NOM NOM Certification
IHB2 BayLight (300W)	CW White 5000K				BLK Black	
					BZ Bronze	
					WH White	

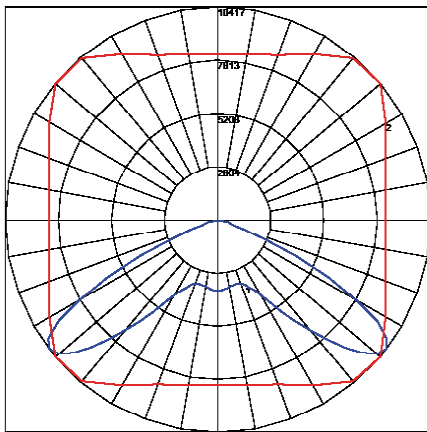
BAYLIGHT PERFORMANCE SPECIFICATIONS

Performance Package	Optic	Input Watts	4000K CCT				Total Current @ 120V	Total Current @ 240V	Total Current @ 277V	L70 Life (hrs)	
			Delivered Lumens	Efficacy (LPW)	CRI	Power Factor				@ 25°	@ 40°
IHB1	W	200	18000	90	70	≥.9	1.66	0.85	0.78	>100k	>67k
IHB2	W	300	24080	80	70	≥.9	2.5	1.94	1.14	>100k	>67k

1 Requires installation via aircraft cable (by others)
2 For applications below 0° C, consult factory.

POLAR GRAPH

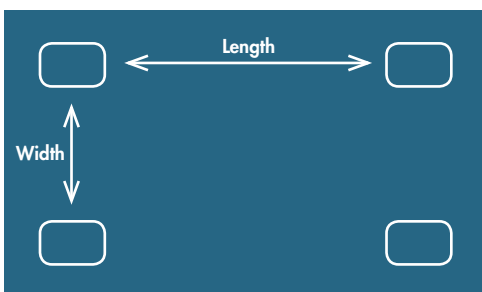
IHB2 NW W MVOLT PND GR



ZONAL LUMEN SUMMARY

Zone	Lumens	% Fixt
0-30	3039.74	12.60
0-40	6623.92	27.50
0-60	20358.87	84.50
0-90	24080.03	100
90-120	0	0
90-130	0	0
90-150	0	0
90-180	0	0
0-180	24080.03	100

BAYLIGHT ESTIMATOR GUIDE



Aerial Perspective

Spacing (Width x Length)	IHB2 Maintained at 20,000 hrs.	400W MH LowBay Maintained at 20,000 hrs.
16ft x 16ft	66	61
20ft x 16ft	55	51
20ft x 20ft	46	45

These numbers are a guide based on noted spacing and a 22ft mounting height with a 3' pendant length. Results may vary in field due to obstructions, reflectance values and temperature. Assumes 80% ceiling reflectance, 50% wall reflectance and 20% floor reflectance.