

FEATURES

30W DC Input Constant Current with Optional Dimming LSDCx030 Series

- High Efficiency
- IP67
- RoHS Compliant
- Certified to UL/cUL 8750
- Optional Dimming



SPECIFICATIONS

Model #	Output Current	Output Voltage	No Load Output Voltage±5%	Ripple & Noise (3)	Voltage	Dimming Option
LSDCx030S035SS	350mA	51~86	91V	0.36	10~30	Timer Dimming / 1-10V Dimming
LSDCx030S070SS	700mA	35~43	48V	0.47	10~30	0-10V Dimming
LSDCx030S090SS	900mA	30~33	37V	0.36	10~28	No Dimming

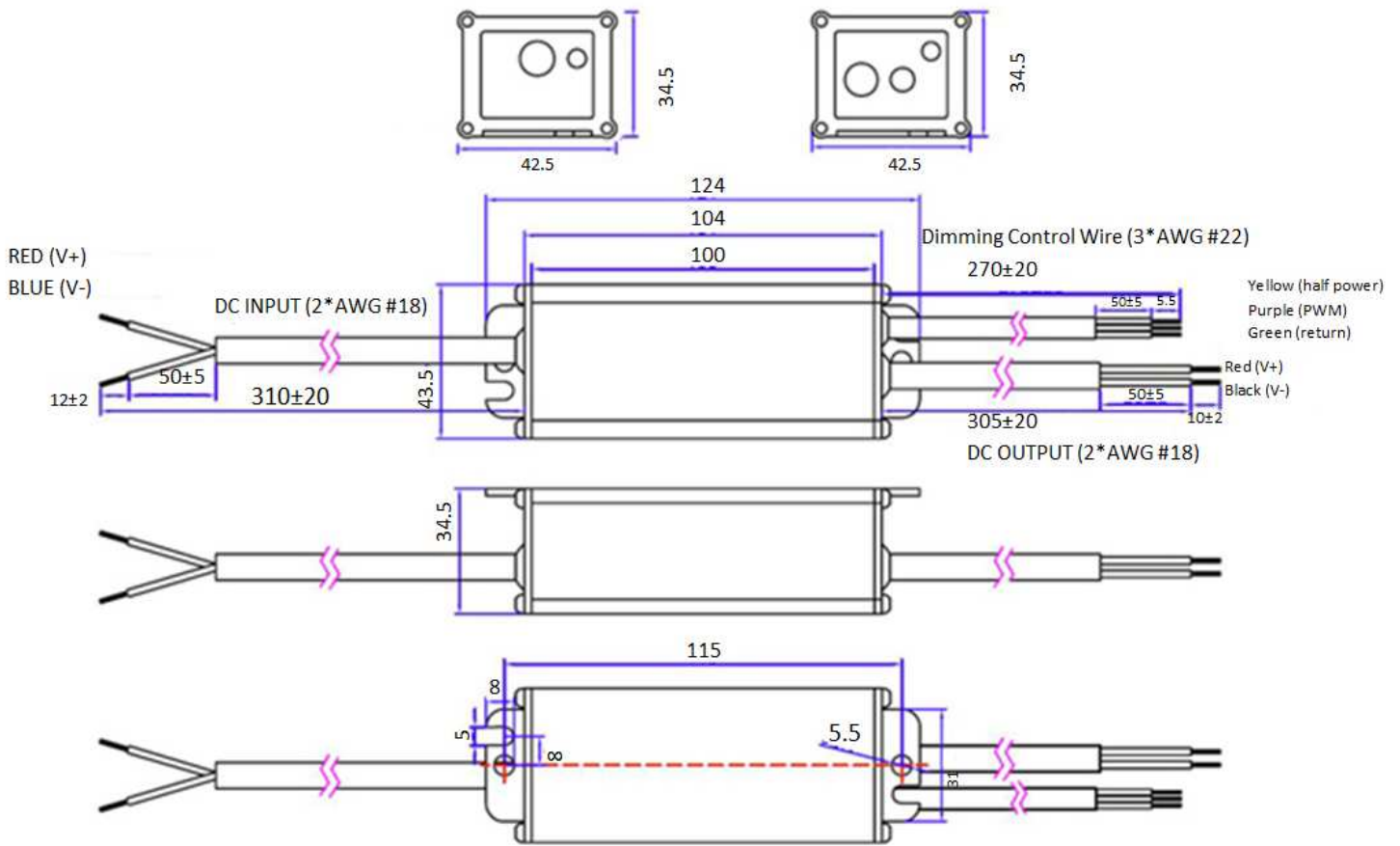
Output	Set-up Delay Time		<0.25s
	Line Regulation		3%
	Load Regulation		5%
Input	Efficiency (2)		12V 90% / 24V 93%
	Inrush Current		4A Cold start, Vin=12V, Po=30W
	DC Current	12V	2.8 A Full load, Vin=12V, Po=30W
24V		1.3 A Full load, Vin=24V, Po=30W	
Dimming	Input Voltage	0~10V	Purple Wire
	Input Current	10mA	Pulse width 0% means connecting the 0~10V wire ground
	Pulse Width	0~100%	
Protection	Over Voltage Protection		1.3 Vo ±5% floating deviation
	Short Circuit Protection		Latch mode. The power supply shall return to normal operation only after recycling AC
Environmental	Temperature Range	Operational	-35°C ~+50°C
		Storage	-40°C~+85°C
	Humidity	Operational	10~100% RH non-condensing
		Storage	5~100% RH
Others	MTBF		100,000 hours
	Life Time		60,000 hours
	Dimensions		(L*W*H) 104*43.5*34.5mm (L*W*H) 4.09*1.71*1.36 Inches
	Weight		315 g



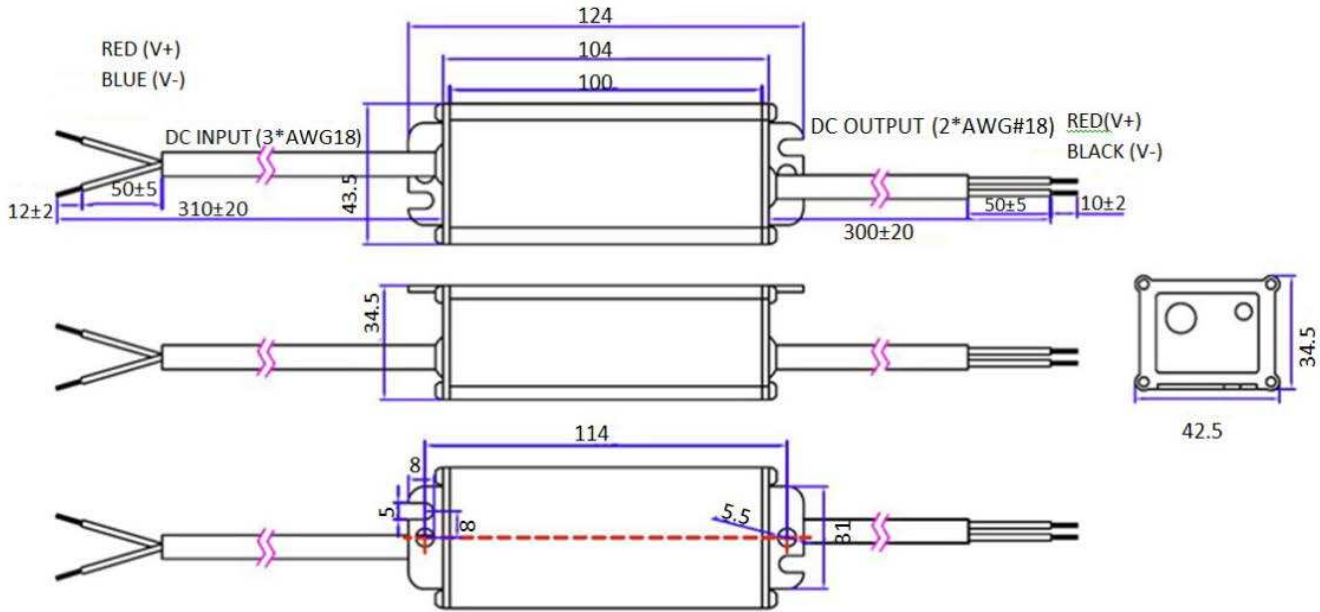
Notes:

1. All specifications are typical at 25°C unless otherwise stated.
2. The "Efficiency" values are measured at full load, after the unit is thermally stabilized, otherwise they will be lower about 1%.
3. The "Ripple & Noise" values are measured by 20MHz bandwidth oscilloscope and the output paralleled a 0.1uF ceramic capacitor and a 10uF electrolytic capacitor.

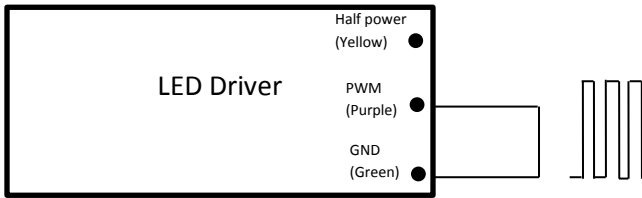
Mechanical Specifications



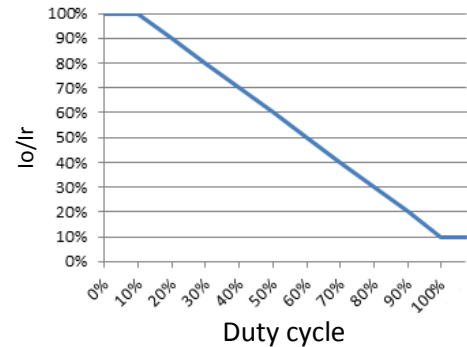
Non Dimming Mechanical Specifications



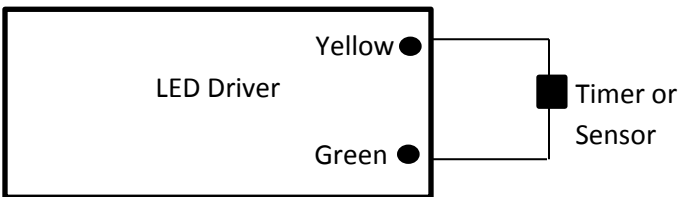
PWM Dimming



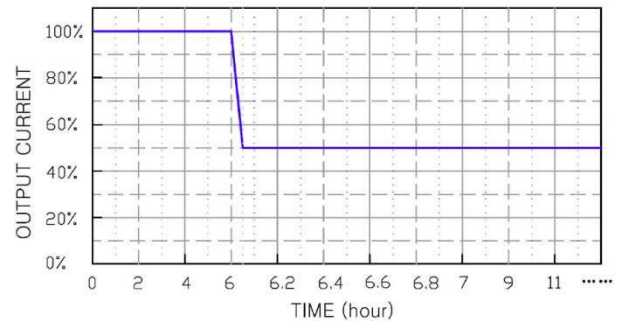
PWM Dimming:
 Pulse: Hi=5V Low=2V
 Duty: 10-100% Fsw: 1-2KHz



Half Power Dimming chart

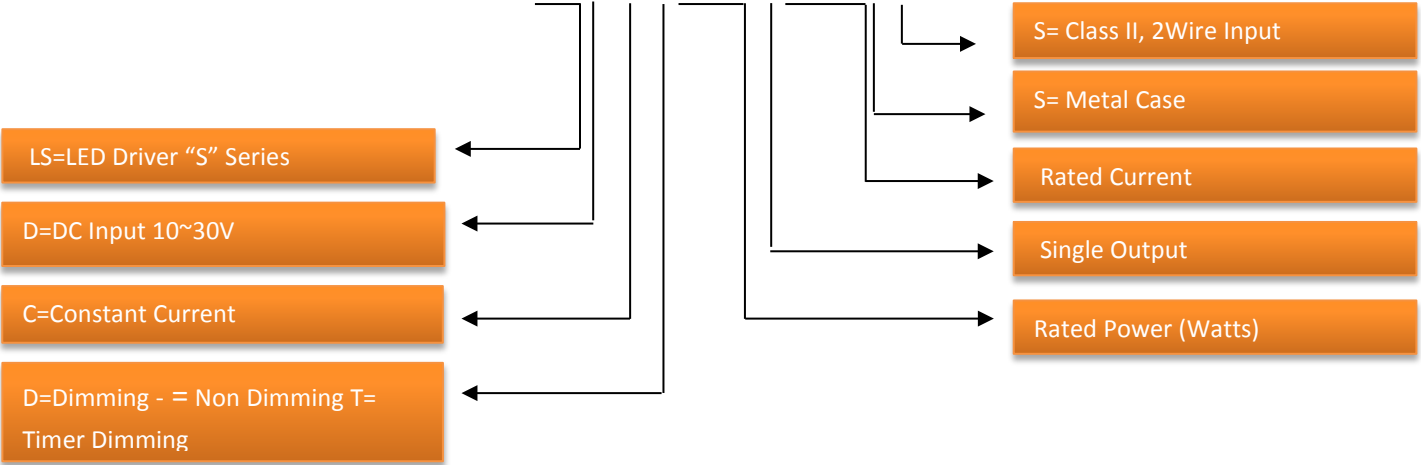


Timer Dimming



PART NUMBER SCHEME

LSDC_x030S035SS



SPECIFICATIONS ARE SUBJECT TO CHANGE WITHOUT NOTICE. AUTEC IS NOT RESPONSIBLE FOR ISSUES ARISING FROM ERRORS OR OMISSIONS.

