

# 0305 Combined Switch / Lampholder for Freezers

## Approvals and specifications



2A 250Vac 25 T 85 (0305 only)



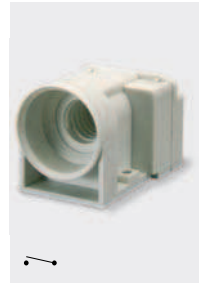
UL 15W 125/250Vac (0305 only)  
UL 65°C, file E116391 (0305 only)

Switched units have  $\mu$  contact gap.  
Technical data on pages 4 & 5.

- ▶ E12 and E14 lamps
- ▶ Switch rating up to 2A, 250V ac
- ▶ Auto switching
- ▶ Mercury free
- ▶ Available with right or left hand orientation
- ▶ Available as lampholder only



C0305RT - - -



C0305LT - - -

**C 0305 R T - - -**

TERMINAL FUNCTION MOUNTING BODY COLOUR, ETC

▶ TERMINAL	▶ FUNCTION	▶ MOUNTING	▶ BODY	▶ OPTIONS
<b>C</b> <p>6.3 x 0.8</p> <p>9.1</p>	<b>0305</b> (E14) <p>ON - OFF Switch and Lampholder</p> <b>0306</b> (E12) <p>ON - OFF Switch and Lampholder</p>	<b>L</b> <p>For Left hinged lid for 0305/0306 switches, not for 0307 lampholder</p> <p>View from bulb end</p> <b>R</b> <p>For Right hinged lid for 0307 lampholder or 0305/0306 switches</p> <p>View from bulb end</p>	<b>T</b> <p>Body without flange for 0305/0306 switches</p> <p>Top view</p> <b>S</b> <p>Body with rear flange for 0307 lampholder and for 0305/0306 switches</p> <p>Top view</p>	<b>Colour</b> <p>Call sales for colours. A full range is available for large orders.</p>

## Dimensions (mm) and Properties

The mechanism of this switch/lampholder does not contain mercury and may be safely used in food storage equipment.

When fitted to the lid of a freezer storage cabinet, the switch will operate the lamp when the lid is opened to the angle of tilt shown in the drawing.

