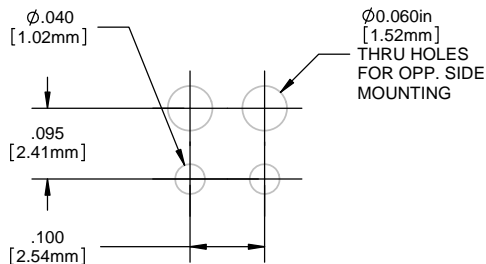


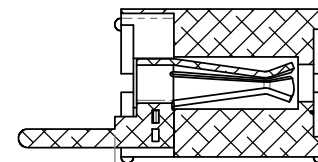
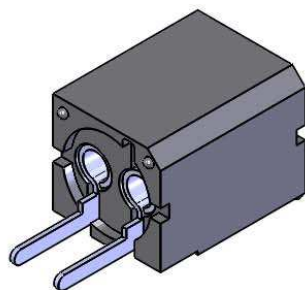
NOTES:

1. ROHS COMPLIANT
2. MATERIAL: HOUSING - NYLON 6/6, U.L.94-V0 RATING, BLACK (UNLESS OTHERWISE SPECIFIED)  
CONTACTS - PHOSPHOR BRONZE, TIN PLATED
3. MOUNTING: SPACING ON .250" [6.35mm] CENTERS. OPTIONAL .060" [1.52mm] HOLES FOR OPPOSITE SIDE MOUNTING. SAME SIDE MOUNTING, DELETE THE .060" [1.52mm] HOLES (SEE PATTERN)
4. OPTO: STANDARD VISIBLE, IR LED, OR PHOTO DETECTOR WITH LEADS ON .100" [2.54mm] CENTERS
5. LED LEAD DIMENSIONS: MINIMUM .017" [.43mm] ROUND OR SQUARE SHAPE. MAXIMUM .030" [.76mm] THICKNESS - .040" [1.02mm] WIDTH
6. U.S. & FOREIGN PATENTS ISSUED

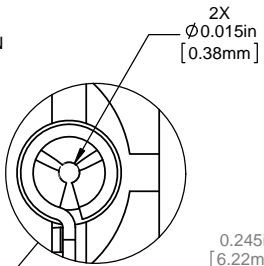
REVISIONS					
ECN #	REV.	DESCRIPTION	DATE	INITIALS	CHKD
	001	REVISED PER ECR 111009AZ01	6/20/10	SMU	DZ
426	002	REVISED PER ECR 041212KFD2	4/13/12	KH	ED



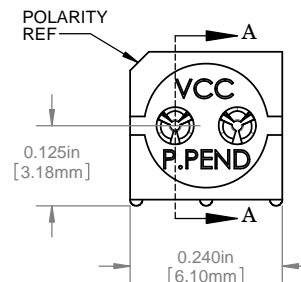
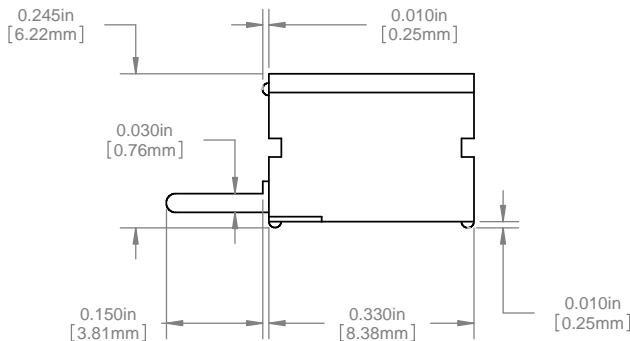
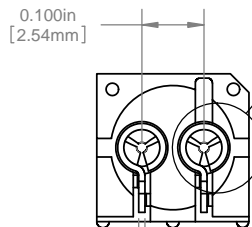
PCB HOLE PATTERN



SECTION A-A



DETAIL B  
SCALE 10 : 1



ORDERING CODE: **PCV 220**

DIMENSION STYLE: INCHES (MM) GENERAL TOLERANCES UNLESS OTHERWISE SPECIFIED		APPROVAL		DATE
INCHES	MM	DRAWN	SMU	6/20/10
X	± .020 ± .508	CHECKED	DZ	6/20/10
XX	± .010 ± .254			
XXX	± .005 ± .127			
ANGLE 1/4				
BREAK ALL CORNERS AND SHARP EDGES 90° MAX				
THIRD ANGLE PROJECTION		MATERIAL		
PROPRIETARY AND CONFIDENTIAL		SEE NOTES		
THE INFORMATION CONTAINED IN THIS DRAWING IS THE SOLE PROPERTY OF VISUAL COMMUNICATIONS COMPANY, INC. ANY REPRODUCTION IN PART OR AS A WHOLE WITHOUT THE WRITTEN PERMISSION OF VISUAL COMMUNICATIONS COMPANY, INC IS PROHIBITED.		FINISH		
		SEE NOTES		
DO NOT SCALE DRAWING				

MATERIAL		DATE	
SEE NOTES		6/20/10	
FINISH		DATE	
SEE NOTES		6/20/10	

**VCC**  
12780 DANIELSON CT SUITE A, POWAY, CA 92064 USA  
PHONE (800) 522-5546 EMAIL: vccsales@vccllite.com

TITLE:  
**P-C-LITE® VERTICAL MOUNT**

SIZE	DWG. NO.	REV
<b>B</b>	PCV 220	<b>002</b>

SCALE: 5:1 SHEET 1 OF 1