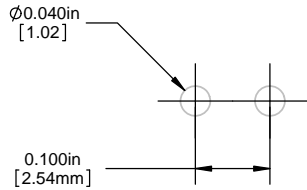


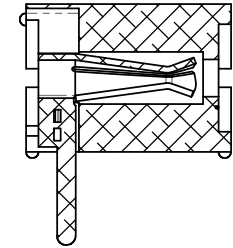
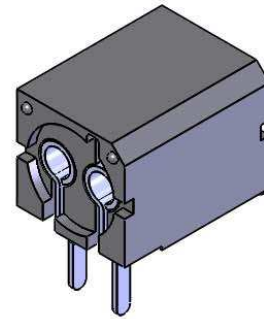
NOTES:

1. ROHS COMPLIANT
2. MATERIAL: HOUSING - NYLON 6/6, U.L. 94-V0 RATING, BLACK (UNLESS OTHERWISE SPECIFIED)
CONTACTS - PHOSPHER BRONZE, TIN PLATED
3. MOUNTING: SPACING ON .250 [6.35mm] CENTERS
4. OPTO: STANDARD VISIBLE, IR LED, OR PHOTO DETECTOR WITH LEADS ON .100" [.25mm] CENTERS
5. LED LEAD DIMENSIONS: MINIMUM .017" [.43mm] ROUND OR SQUARE SHAPE. MAXIMUM .030" [.76mm] THICKNESS - .040" [1.02mm] WIDTH
6. U.S. & FOREIGN PATENTS ISSUED

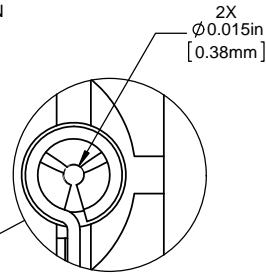
REVISIONS					
ECN #	REV.	DESCRIPTION	DATE	INITIALS	CHKD
-	001	REVISED PER ECR 111009AZ01	6/20/10	SMU	DZ
410	002	REVISED PER ECR 030712ED01	3/8/12	KH	AZ



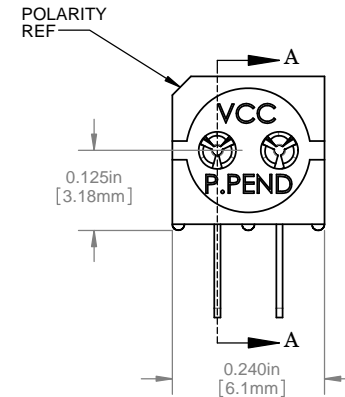
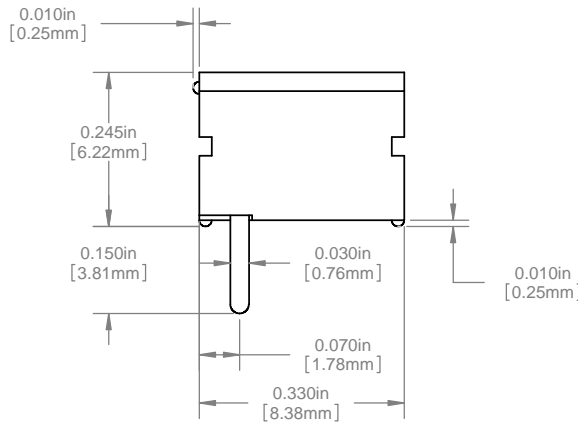
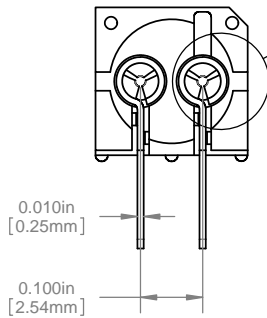
PCB HOLE PATTERN



SECTION A-A



DETAIL H
SCALE 10 : 1



ORDERING CODE: **PCH330**

<small>DIMENSION STYLE: INCHES / MM GENERAL TOLERANCES UNLESS OTHERWISE SPECIFIED</small> <table border="1"> <tr> <td>INCHES</td> <td>MM</td> </tr> <tr> <td>X</td> <td>± .020 ± .508</td> </tr> <tr> <td>XX</td> <td>± .010 ± .254</td> </tr> <tr> <td>XXX</td> <td>± .005 ± .127</td> </tr> </table> <small>ANGLE 1</small> <small>BREAK ALL CORNERS AND SHARP EDGES 90° MAX</small> <small>THIRD ANGLE PROJECTION</small> <small>PROPRIETARY AND CONFIDENTIAL</small> <small>THE INFORMATION CONTAINED IN THIS DRAWING IS THE SOLE PROPERTY OF VISUAL COMMUNICATIONS COMPANY, INC. ANY REPRODUCTION IN PART OR AS A WHOLE WITHOUT THE WRITTEN PERMISSION OF VISUAL COMMUNICATIONS COMPANY, INC IS PROHIBITED.</small>	INCHES	MM	X	± .020 ± .508	XX	± .010 ± .254	XXX	± .005 ± .127	APPROVAL	DATE
	INCHES	MM								
	X	± .020 ± .508								
	XX	± .010 ± .254								
XXX	± .005 ± .127									
DRAWN	SMU	6/20/10								
CHECKED	DZ	6/20/10								
MATERIAL										
SEE NOTES										
FINISH										
SEE NOTES										
DO NOT SCALE DRAWING										

VCC
 12780 DANIELSON CT SUITE A, POWAY, CA 92064 USA
 PHONE: (800) 522-5546 EMAIL: vccsales@vcc-lite.com

TITLE: **P-C-LITE® VERTICAL MOUNT**

SIZE	DWG. NO.	REV
B	PCH 330	002

SCALE: 5:1 SHEET 1 OF 1